

## Product datasheet

# Anti-MINA53 antibody ab50908

★★★★☆ 1 Abreviews 3 Images

### Overview

<b>Product name</b>	Anti-MINA53 antibody
<b>Description</b>	Rabbit polyclonal to MINA53
<b>Host species</b>	Rabbit
<b>Tested applications</b>	<b>Suitable for:</b> WB, IHC-P, ELISA
<b>Species reactivity</b>	<b>Reacts with:</b> Human <b>Predicted to work with:</b> Cat, Pig
<b>Immunogen</b>	Synthetic peptide: MPKKAKPTGS GKEEGPAPCK QMKLEAAGGP SALNFDSPSS LFESLISPIK , corresponding to amino acids 1-50 of Human MINA53 <a href="#">Run BLAST with ExPASy</a> <a href="#">Run BLAST with NCBI</a>
<b>Positive control</b>	HepG2 cell lysate; human intestine tissue

### Properties

<b>Form</b>	Liquid
<b>Storage instructions</b>	Shipped at 4°C. Upon delivery aliquot and store at -20°C. Avoid freeze / thaw cycles.
<b>Storage buffer</b>	Preservative: 0.09% Sodium azide Constituents: 2% Sucrose, PBS
<b>Purity</b>	Immunogen affinity purified
<b>Clonality</b>	Polyclonal
<b>Isotype</b>	IgG

### Applications

Our [Abpromise guarantee](#) covers the use of **ab50908** in the following tested applications.

The application notes include recommended starting dilutions; optimal dilutions/concentrations should be determined by the end user.

Application	Abreviews	Notes
WB		Use a concentration of 0.25 µg/ml. Detects a band of approximately 30, 45 kDa (predicted molecular weight: 32, 53 kDa). Good results were obtained when blocked with 5% non-fat dry milk in 0.05% PBS-T.

Application	Abreviews	Notes
IHC-P	★★★★☆	Use a concentration of 4 - 8 µg/ml.
ELISA		Use at an assay dependent concentration.

## Target

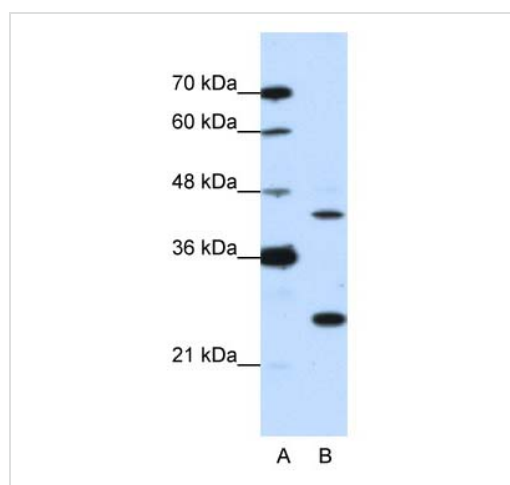
**Function** Involved in cellular proliferation. May play an important role in cell growth and survival. May be involved in ribosome biogenesis, most likely during the assembly process of pre-ribosomal particles.

**Tissue specificity** Expressed in liver, skeletal muscle, heart, pancreas, and placenta. Not detected in brain, lung or kidney. Expressed in several lung cancer tissues, but is barely detected in the adjacent non-cancerous tissues. Also highly expressed in several esophageal squamous cell carcinoma (ESCC), and colon cancer tissues, and in various cancer cell lines.

**Sequence similarities** Belongs to the MINA53/NO66 family.  
Contains 1 JmjC domain.

**Cellular localization** Nucleus. Nucleus > nucleolus.

## Images



Western blot - Anti-MINA53 antibody (ab50908)

Anti-MINA53 antibody (ab50908) at 1.25 µg/ml + HepG2 cell Lysate (10µg)

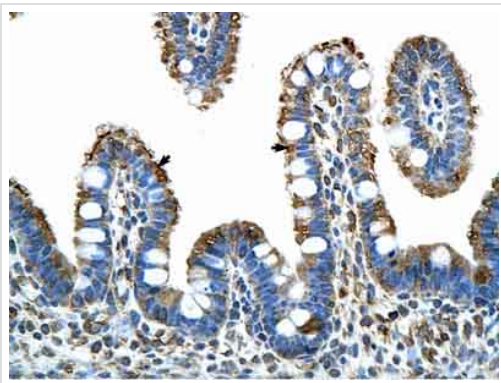
### Secondary

HRP conjugated anti-Rabbit IgG at 1/50000 dilution

**Predicted band size:** 32, 53 kDa

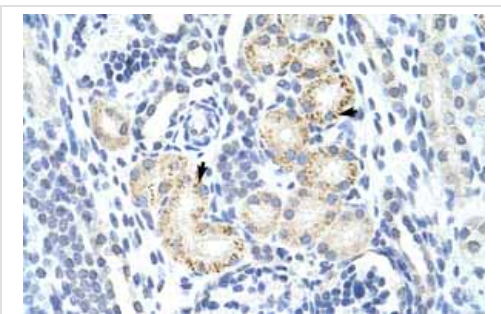
**Observed band size:** 30,45 kDa

Gel concentration 12%. We believe the two bands observed correspond to isoforms A and B of human MINA.



ab50908 at a concentration of 4-8 $\mu$ g/ml positively labelling epithelial cells of human intestinal villus(indicated by arrows) in paraffin-embedded tissue. Magnification 400X

Immunohistochemistry (Formalin/PFA-fixed paraffin-embedded sections) - Anti-MINA53 antibody (ab50908)



Immunohistochemistry of Human kidney lysate tissue at an antibody concentration of 4-8 $\mu$ g/ml using anti-MINA antibody (ab50908)

Immunohistochemistry (Formalin/PFA-fixed paraffin-embedded sections) - Anti-MINA53 antibody (ab50908)

**Please note:** All products are "FOR RESEARCH USE ONLY AND ARE NOT INTENDED FOR DIAGNOSTIC OR THERAPEUTIC USE"

### Our Abpromise to you: Quality guaranteed and expert technical support

- Replacement or refund for products not performing as stated on the datasheet
- Valid for 12 months from date of delivery
- Response to your inquiry within 24 hours
- We provide support in Chinese, English, French, German, Japanese and Spanish
- Extensive multi-media technical resources to help you
- We investigate all quality concerns to ensure our products perform to the highest standards

If the product does not perform as described on this datasheet, we will offer a refund or replacement. For full details of the Abpromise, please visit <https://www.abcam.com/abpromise> or contact our technical team.

### Terms and conditions

- Guarantee only valid for products bought direct from Abcam or one of our authorized distributors