


Product datasheet

Anti-MTA1 antibody ab84136

1 References 2 Images

Overview

Product name	Anti-MTA1 antibody
Description	Rabbit polyclonal to MTA1
Host species	Rabbit
Tested applications	Suitable for: IHC-P
Species reactivity	Reacts with: Human Predicted to work with: Horse, Cow, Dog, Ferret, Rhesus monkey, Gorilla, Orangutan, Elephant 
Immunogen	Synthetic peptide corresponding to a region within residues 400 and 450 of human MTA1 (SwissProt entry Q13330).
Positive control	Human stomach adenocarcinoma; human lung non small cell carcinoma.

Properties

Form	Liquid
Storage instructions	Shipped at 4°C. Upon delivery aliquot and store at -20°C. Avoid freeze / thaw cycles.
Storage buffer	Preservative: 0.09% Sodium Azide Constituents: 0.1% BSA, Tris buffered saline
Purity	Immunogen affinity purified
Purification notes	Affinity purified using an epitope specific to MTA1 immobilized on solid support.
Clonality	Polyclonal
Isotype	IgG

Applications

Our [Abpromise guarantee](#) covers the use of **ab84136** in the following tested applications.

The application notes include recommended starting dilutions; optimal dilutions/concentrations should be determined by the end user.

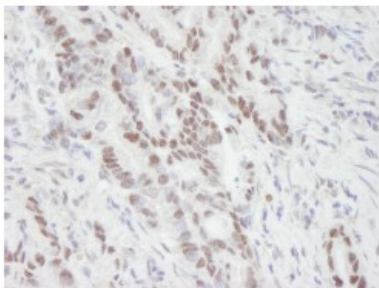
Application	Abreviews	Notes
-------------	-----------	-------

Application	Abreviews	Notes
IHC-P		1/100 - 1/500. Antigen retrieval is not essential but may optimise staining. The use of citrate buffer will enhance staining.

Target

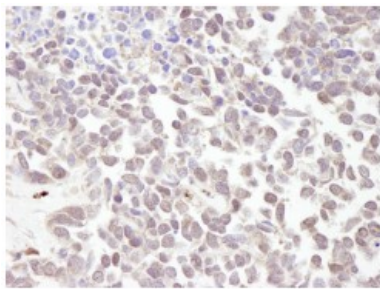
Function	May be involved in the regulation of gene expression by covalent modification of histone proteins. Isoform Long is a corepressor of estrogen receptor (ER). Isoform Short binds to ER and sequesters it in the cytoplasm and enhances non-genomic responses of ER.
Tissue specificity	Widely expressed. High expression in brain, ovaries, adrenal glands and virgin mammary glands. Higher in tumors than in adjacent normal tissue from the same individual.
Sequence similarities	Contains 1 BAH domain. Contains 1 ELM2 domain. Contains 1 GATA-type zinc finger. Contains 1 SANT domain.
Developmental stage	Highly expressed in metastatic cells.
Domain	Isoform Short contains a Leu-Arg-Ile-Leu-Leu motif (ER binding motif).
Cellular localization	Cytoplasm and Nucleus.

Images



ab84136, at a 1/100 dilution, staining MTA1 in formalin fixed, paraffin embedded human stomach adenocarcinoma tissue by Immunohistochemistry. Detection: DAB staining.

Immunohistochemistry (Formalin/PFA-fixed paraffin-embedded sections) - Anti-MTA1 antibody (ab84136)



ab84136, at a 1/100 dilution, staining MTA1 in formalin fixed, paraffin embedded human lung non small cell carcinoma tissue by Immunohistochemistry. Detection: DAB staining.

Immunohistochemistry (Formalin/PFA-fixed paraffin-embedded sections) - Anti-MTA1 antibody (ab84136)

Please note: All products are "FOR RESEARCH USE ONLY AND ARE NOT INTENDED FOR DIAGNOSTIC OR THERAPEUTIC USE"

Our Abpromise to you: Quality guaranteed and expert technical support

- Replacement or refund for products not performing as stated on the datasheet
- Valid for 12 months from date of delivery
- Response to your inquiry within 24 hours
- We provide support in Chinese, English, French, German, Japanese and Spanish
- Extensive multi-media technical resources to help you
- We investigate all quality concerns to ensure our products perform to the highest standards

If the product does not perform as described on this datasheet, we will offer a refund or replacement. For full details of the Abpromise, please visit <https://www.abcam.com/abpromise> or contact our technical team.

Terms and conditions

- Guarantee only valid for products bought direct from Abcam or one of our authorized distributors