

Product datasheet

Anti-MafB antibody ab82837

1 Image

Overview

<b>Product name</b>	Anti-MafB antibody
<b>Description</b>	Rabbit polyclonal to MafB
<b>Host species</b>	Rabbit
<b>Tested applications</b>	<b>Suitable for:</b> ELISA, WB
<b>Species reactivity</b>	<b>Reacts with:</b> Mouse, Human
<b>Immunogen</b>	3 synthetic peptides (human) conjugated to KLH

Positive control

[Purchase matching WB positive control: Recombinant Human MafB protein >](#)

Induced culture of E.coli (one shot Top10 competent cells). Plasmid name: pBAD-DEST49.

Properties

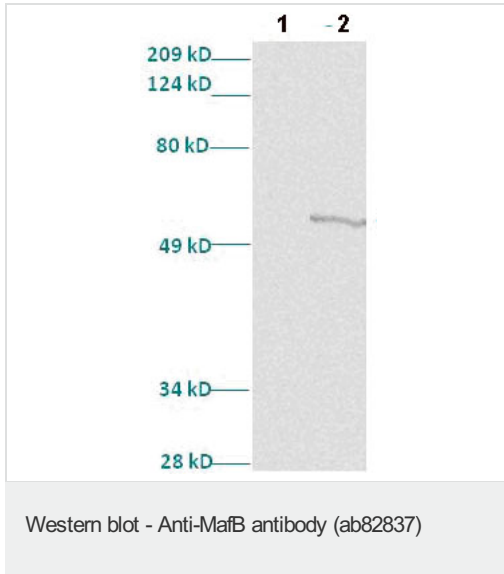
<b>Form</b>	Liquid
<b>Storage instructions</b>	Shipped at 4°C. Upon delivery aliquot and store at -20°C or -80°C. Avoid repeated freeze / thaw cycles.
<b>Storage buffer</b>	Preservative: 0.01% Thimerosal (merthiolate) Constituents: Whole serum
<b>Purity</b>	Immunogen affinity purified
<b>Purification notes</b>	Crude serum, final bleed.
<b>Clonality</b>	Polyclonal
<b>Isotype</b>	IgG

Applications

Our [Abpromise guarantee](#) covers the use of **ab82837** in the following tested applications.

The application notes include recommended starting dilutions; optimal dilutions/concentrations should be determined by the end user.

Application	Abreviews	Notes
ELISA		
WB		
<b>Application notes</b>	<p>ELISA: Use at an assay dependent dilution.  Antibody specificity was verified by direct ELISA against the 3 immunogen peptides. A minimum titer of 1/20000 is determined for one of the three peptides.  WB: 1/500. Detects a band of approximately 50 kDa (predicted molecular weight: 50 kDa).</p> <p>Not yet tested in other applications.  Optimal dilutions/concentrations should be determined by the end user.</p>	
<b>Target</b>		
<b>Function</b>	<p>Acts as a transcriptional activator or repressor. Plays a pivotal role in regulating lineage-specific hematopoiesis by repressing ETS1-mediated transcription of erythroid-specific genes in myeloid cells. Required for monocytic, macrophage, podocyte and islet beta cell differentiation. Involved in renal tubule survival and F4/80 maturation. Activates the insulin and glucagon promoters. Together with PAX6, transactivates weakly the glucagon gene promoter through the G1 element. SUMO modification controls its transcriptional activity and ability to specify macrophage fate. Binds element G1 on the glucagon promoter (By similarity). Involved either as an oncogene or as a tumor suppressor, depending on the cell context.</p>	
<b>Tissue specificity</b>	Ubiquitous.	
<b>Involvement in disease</b>	<p>Defects in MAFB are the cause of multicentric carpotarsal osteolysis syndrome (MCTO) [MIM:166300]. MCTO is a rare skeletal disorder, usually presenting in early childhood with a clinical picture mimicking juvenile rheumatoid arthritis. Progressive destruction of the carpal and tarsal bone usually occurs and other bones may also be involved. Chronic renal failure is a frequent component of the syndrome. Mental retardation and minor facial anomalies have been noted in some patients.</p>	
<b>Sequence similarities</b>	<p>Belongs to the bZIP family. Maf subfamily.  Contains 1 bZIP domain.</p>	
<b>Domain</b>	The leucine-zipper domain is involved in the interaction with LRPICD.	
<b>Post-translational modifications</b>	<p>Phosphorylated by GSK3 and MAPK13 on serine and threonine residues.  Sumoylated. Sumoylation on Lys-32 and Lys-297 stimulates its transcriptional repression activity and promotes macrophage differentiation from myeloid progenitors.</p>	
<b>Cellular localization</b>	Nucleus.	
<b>Images</b>		



**All lanes :** Anti-MafB antibody (ab82837) at 1/500 dilution

**Lane 1 :** uninduced culture of E.coli (one shot Top10 competent cells)

**Lane 2 :** induced culture of E.coli (one shot Top10 competent cells)

**Secondary**

**All lanes :** anti-Rabbit IgG HRP at 1/1000 dilution

**Predicted band size:** 50 kDa

**Observed band size:** 50 kDa

Predicted molecular weight is 35.7kDa, tag is 14kDa.

**Please note:** All products are "FOR RESEARCH USE ONLY AND ARE NOT INTENDED FOR DIAGNOSTIC OR THERAPEUTIC USE"

**Our Abpromise to you: Quality guaranteed and expert technical support**

- Replacement or refund for products not performing as stated on the datasheet
- Valid for 12 months from date of delivery
- Response to your inquiry within 24 hours
- We provide support in Chinese, English, French, German, Japanese and Spanish
- Extensive multi-media technical resources to help you
- We investigate all quality concerns to ensure our products perform to the highest standards

If the product does not perform as described on this datasheet, we will offer a refund or replacement. For full details of the Abpromise, please visit <https://www.abcam.com/abpromise> or contact our technical team.

**Terms and conditions**

- Guarantee only valid for products bought direct from Abcam or one of our authorized distributors