

Product datasheet

# Anti-Mannan Binding Lectin antibody ab103251

1 Image

Overview

---

|                            |  |
|----------------------------|--|
| <b>Product name</b>        | Anti-Mannan Binding Lectin antibody        |
| <b>Description</b>         | Rabbit polyclonal to Mannan Binding Lectin |
| <b>Host species</b>        | Rabbit                                     |
| <b>Tested applications</b> | <b>Suitable for:</b> WB                    |
| <b>Species reactivity</b>  | <b>Reacts with:</b> Mouse, Human           |
| <b>Immunogen</b>           | Recombinant Human Mannan Binding Lectin    |
| <b>Positive control</b>    | Mouse heart tissue lysate                  |

Properties

---

|                             |   |
|-----------------------------|---|
| <b>Form</b>                 | Liquid  |
| <b>Storage instructions</b> | Shipped at 4°C. Store at 4°C (up to 6 months). Store at -20°C long term.                    |
| <b>Storage buffer</b>       | Preservative: 0.09% Sodium Azide<br>Constituents: PBS                                       |
| <b>Purity</b>               | Immunogen affinity purified   |
| <b>Purification notes</b>   | ab103251 is purified through a protein A column, followed by protein affinity purification. |
| <b>Clonality</b>            | Polyclonal  |
| <b>Isotype</b>              | IgG   |

Applications

---

Our [Abpromise guarantee](#) covers the use of **ab103251** in the following tested applications.

The application notes include recommended starting dilutions; optimal dilutions/concentrations should be determined by the end user.

| Application | Abreviews | Notes  |
|-------------|-----------|--|
| WB          |           | 1/100 - 1/500. Predicted molecular weight: 26 kDa. |

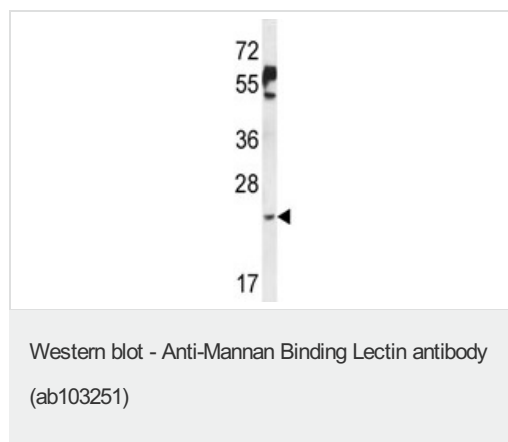
---

Target

---

|                               |  |
|-------------------------------|--|
| <b>Function</b>               | Calcium-dependent lectin involved in innate immune defense. Binds mannose, fucose and N-acetylglucosamine on different microorganisms and activates the lectin complement pathway. Binds to late apoptotic cells, as well as to apoptotic blebs and to necrotic cells, but not to early apoptotic cells, facilitating their uptake by macrophages. May bind DNA. |
| <b>Tissue specificity</b>     | Plasma protein produced mainly in the liver.   |
| <b>Involvement in disease</b> | Note=There is an association between low levels of MBL2 and a defect of opsonization which results in susceptibility to frequent and chronic infections.   |
| <b>Sequence similarities</b>  | Contains 1 C-type lectin domain.<br>Contains 1 collagen-like domain.   |
| <b>Cellular localization</b>  | Secreted.  |

## Images



Anti-Mannan Binding Lectin antibody  
(ab103251) at 1/100 dilution + Mouse heart  
tissue lysate at 35 µg

**Predicted band size:** 26 kDa

**Please note:** All products are "FOR RESEARCH USE ONLY AND ARE NOT INTENDED FOR DIAGNOSTIC OR THERAPEUTIC USE"

## Our Abpromise to you: Quality guaranteed and expert technical support

- Replacement or refund for products not performing as stated on the datasheet
- Valid for 12 months from date of delivery
- Response to your inquiry within 24 hours
- We provide support in Chinese, English, French, German, Japanese and Spanish
- Extensive multi-media technical resources to help you
- We investigate all quality concerns to ensure our products perform to the highest standards

If the product does not perform as described on this datasheet, we will offer a refund or replacement. For full details of the Abpromise, please visit <https://www.abcam.com/abpromise> or contact our technical team.

## Terms and conditions

- Guarantee only valid for products bought direct from Abcam or one of our authorized distributors