

Product datasheet

Anti-Membrin antibody ab115642

1 Image

Overview

<b>Product name</b>	Anti-Membrin antibody
<b>Description</b>	Rabbit polyclonal to Membrin
<b>Host species</b>	Rabbit
<b>Tested applications</b>	<b>Suitable for:</b> WB, IHC-P
<b>Species reactivity</b>	<b>Reacts with:</b> Mouse, Rat, Sheep, Rabbit, Chicken, Hamster, Cow, Dog, Human, Pig, Drosophila melanogaster, Monkey
<b>Immunogen</b>	Synthetic peptide corresponding to a region of Rat Membrin.
<b>Positive control</b>	Human liver tissue.

Properties

<b>Form</b>	Liquid
<b>Storage instructions</b>	Shipped at 4°C. Store at -20°C.
<b>Storage buffer</b>	pH: 8.40 Constituents: 0.44% Sodium chloride, 0.95% Sodium borate, 0.62% Boric Acid, 0.15% EDTA
<b>Purity</b>	Immunogen affinity purified
<b>Purification notes</b>	ab115642 is peptide immunoaffinity purified.
<b>Clonality</b>	Polyclonal
<b>Isotype</b>	IgG

Applications

Our [Abpromise guarantee](#) covers the use of **ab115642** in the following tested applications.

The application notes include recommended starting dilutions; optimal dilutions/concentrations should be determined by the end user.

Application	Abreviews	Notes
WB		Use a concentration of 2 µg/ml. Detects a band of approximately 27 kDa (predicted molecular weight: 25 kDa). (ECL).
IHC-P		Use a concentration of 10 µg/ml.

## Target

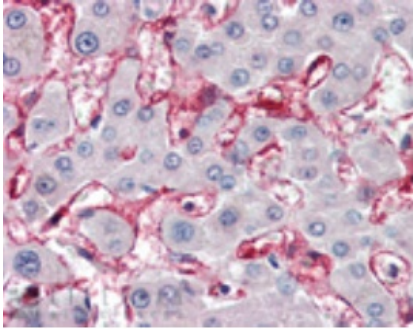
---

<b>Function</b>	Involved in transport of proteins from the cis/medial-Golgi to the trans-Golgi network.
<b>Sequence similarities</b>	Belongs to the GOSR2 family.
<b>Cellular localization</b>	Golgi apparatus membrane.

---

## Images

---



ab115642 at 10 $\mu$ g/ml staining Membrin in Paraffin-embedded Human Liver tissue by Immunohistochemistry.

Immunohistochemistry (Formalin/PFA-fixed paraffin-embedded sections) - Anti-Membrin antibody (ab115642)

**Please note:** All products are "FOR RESEARCH USE ONLY AND ARE NOT INTENDED FOR DIAGNOSTIC OR THERAPEUTIC USE"

## Our Abpromise to you: Quality guaranteed and expert technical support

---

- Replacement or refund for products not performing as stated on the datasheet
- Valid for 12 months from date of delivery
- Response to your inquiry within 24 hours
- We provide support in Chinese, English, French, German, Japanese and Spanish
- Extensive multi-media technical resources to help you
- We investigate all quality concerns to ensure our products perform to the highest standards

If the product does not perform as described on this datasheet, we will offer a refund or replacement. For full details of the Abpromise, please visit <https://www.abcam.com/abpromise> or contact our technical team.

## Terms and conditions

---

- Guarantee only valid for products bought direct from Abcam or one of our authorized distributors