


Product datasheet

Anti-MCT 14 antibody ab110374

1 Image

Overview

| | |
|----------------------------|---|
| Product name | Anti-MCT 14 antibody |
| Description | Rabbit polyclonal to MCT 14 |
| Host species | Rabbit |
| Tested applications | Suitable for: WB |
| Species reactivity | Reacts with: Human Predicted to work with: Mouse  |
| Immunogen | Synthetic peptide corresponding to a region within Human Monocarboxylate transporter 14. |
| Positive control | HuvEc and HepG2 cell extracts. |

Properties

| | |
|-----------------------------|---|
| Form | Liquid |
| Storage instructions | Shipped at 4°C. Store at -20°C. Stable for 12 months at -20°C. |
| Storage buffer | pH: 7.40 Preservative: 0.02% Sodium azide Constituents: PBS, 0.88% Sodium chloride, 50% Glycerol Note: without Mg ²⁺ and Ca ²⁺ |
| Purity | Immunogen affinity purified |
| Purification notes | ab110374 was affinity-purified from rabbit antiserum by affinity-chromatography using epitope-specific immunogen. |
| Clonality | Polyclonal |
| Isotype | IgG |

Applications

Our [Abpromise guarantee](#) covers the use of **ab110374** in the following tested applications.

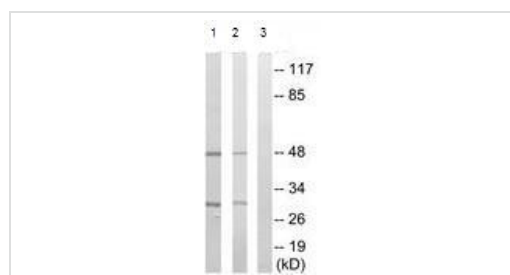
The application notes include recommended starting dilutions; optimal dilutions/concentrations should be determined by the end user.

| Application | Abreviews | Notes |
|-------------|-----------|---|
| WB | | 1/500 - 1/1000. Predicted molecular weight: 56 kDa. |

Target

| | |
|------------------------------|---|
| Function | Proton-linked monocarboxylate transporter. Catalyzes the rapid transport across the plasma membrane of many monocarboxylates. |
| Sequence similarities | Belongs to the major facilitator superfamily. Monocarboxylate porter (TC 2.A.1.13) family. |
| Cellular localization | Cell membrane. |

Images



Western blot - Anti-Monocarboxylate transporter 14 antibody (ab110374)

All lanes : Anti-MCT 14 antibody (ab110374) at 1/500 dilution

Lane 1 : HepG2 cell lysate

Lane 2 : HuvEc cell lysate

Lane 3 : HepG2 cell lysate with immunizing peptide at 10 µg

Lysates/proteins at 30 µg per lane.

Predicted band size: 56 kDa

Please note: All products are "FOR RESEARCH USE ONLY AND ARE NOT INTENDED FOR DIAGNOSTIC OR THERAPEUTIC USE"

Our Abpromise to you: Quality guaranteed and expert technical support

- Replacement or refund for products not performing as stated on the datasheet
- Valid for 12 months from date of delivery
- Response to your inquiry within 24 hours
- We provide support in Chinese, English, French, German, Japanese and Spanish
- Extensive multi-media technical resources to help you
- We investigate all quality concerns to ensure our products perform to the highest standards

If the product does not perform as described on this datasheet, we will offer a refund or replacement. For full details of the Abpromise, please visit <https://www.abcam.com/abpromise> or contact our technical team.

Terms and conditions

- Guarantee only valid for products bought direct from Abcam or one of our authorized distributors