

## Product datasheet

# Mouse MIP3 alpha ELISA Kit (CCL20) ab100728

[2 Images](#)

### Overview

<b>Product name</b>	Mouse MIP3 alpha ELISA Kit (CCL20)
<b>Detection method</b>	Colorimetric
<b>Sample type</b>	Cell culture supernatant, Serum, Plasma
<b>Assay type</b>	Sandwich (quantitative)
<b>Sensitivity</b>	< 3 pg/ml
<b>Range</b>	2.06 pg/ml - 1500 pg/ml
<b>Recovery</b>	90 %

Sample specific recovery

Sample type	Average %	Range
Cell culture supernatant	80.52	72% - 91%
Serum	83.74	74% - 93%
Plasma	108.2	84% - 143%

**Assay duration** Multiple steps standard assay

**Species reactivity** **Reacts with:** Mouse

### Product overview

Abcam's MIP3 alpha Mouse ELISA (Enzyme-Linked Immunosorbent Assay) kit is an *in vitro* enzyme-linked immunosorbent assay for the quantitative measurement of mouse MIP3 alpha in serum, plasma and cell culture supernatants.

This assay employs an antibody specific for mouse MIP3 alpha coated on a 96-well plate. Standards and samples are pipetted into the wells and MIP3 alpha present in a sample is bound to the wells by the immobilized antibody. The wells are washed and biotinylated anti-mouse MIP3 alpha antibody is added. After washing away unbound biotinylated antibody, HRP-conjugated streptavidin is pipetted to the wells. The wells are again washed, a TMB substrate solution is added to the wells and color develops in proportion to the amount of MIP3 alpha bound. The Stop Solution changes the color from blue to yellow, and the intensity of the color is measured at 450 nm.

**Tested applications** **Suitable for:** Sandwich ELISA

**Platform** Microplate

## Properties

**Storage instructions** Store at -20°C. Please refer to protocols.

Components	1 x 96 tests
20X Wash Buffer Concentrate	1 x 25ml
400X HRP-Streptavidin Concentrate	1 unit
5X Assay Diluent B	1 x 15ml
Assay Diluent A	1 x 30ml
Biotinylated anti-mouse MIP3 alpha	2 vials
MIP3 alpha Microplate (12 x 8 wells)	1 unit
Recombinant Mouse MIP3 alpha Standard (lyophilized)	2 vials
Stop Solution	1 x 8ml
TMB One-Step Substrate Reagent	1 x 12ml

**Function** Chemotactic factor that attracts lymphocytes and, slightly, neutrophils, but not monocytes. Inhibits proliferation of myeloid progenitors in colony formation assays. May be involved in formation and function of the mucosal lymphoid tissues by attracting lymphocytes and dendritic cells towards epithelial cells. C-terminal processed forms have been shown to be equally chemotactically active for leukocytes. Possesses antibacterial activity E.coli ATCC 25922 and S.aureus ATCC 29213.

**Tissue specificity** Expressed predominantly in the liver, lymph nodes, appendix, peripheral blood lymphocytes, and fetal lung. Low levels seen in thymus, prostate, testis, small intestine and colon.

**Sequence similarities** Belongs to the intercrine beta (chemokine CC) family.

**Post-translational modifications** C-terminal processed forms which lack 1, 3 or 6 amino acids are produced by proteolytic cleavage after secretion from peripheral blood monocytes.

**Cellular localization** Secreted.

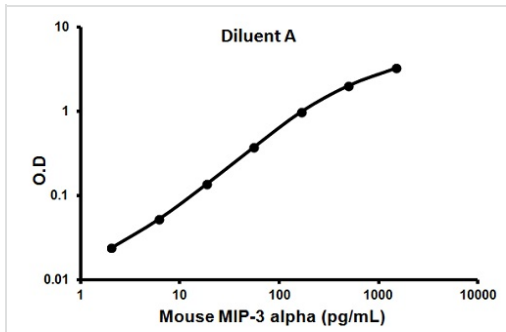
## Applications

Our [Abpromise guarantee](#) covers the use of **ab100728** in the following tested applications.

The application notes include recommended starting dilutions; optimal dilutions/concentrations should be determined by the end user.

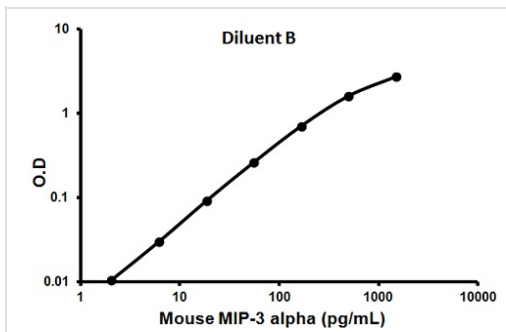
Application	Abreviews	Notes
Sandwich ELISA		Use at an assay dependent concentration.

## Images



Representative standard curve using  
ab100728

Typical standard curve



Representative standard curve using  
ab100728

Typical standard curve

**Please note:** All products are "FOR RESEARCH USE ONLY AND ARE NOT INTENDED FOR DIAGNOSTIC OR THERAPEUTIC USE"

### Our Abpromise to you: Quality guaranteed and expert technical support

- Replacement or refund for products not performing as stated on the datasheet
- Valid for 12 months from date of delivery
- Response to your inquiry within 24 hours
- We provide support in Chinese, English, French, German, Japanese and Spanish
- Extensive multi-media technical resources to help you
- We investigate all quality concerns to ensure our products perform to the highest standards

If the product does not perform as described on this datasheet, we will offer a refund or replacement. For full details of the Abpromise, please visit <https://www.abcam.com/abpromise> or contact our technical team.

### Terms and conditions

- Guarantee only valid for products bought direct from Abcam or one of our authorized distributors