

## Product datasheet

# Anti-Myogenin antibody ab103924

★★★★☆ 1 Abreviews 1 Image

### Overview

---

|                            |  |
|----------------------------|--|
| <b>Product name</b>        | Anti-Myogenin antibody   |
| <b>Description</b>         | Goat polyclonal to Myogenin  |
| <b>Host species</b>        | Goat   |
| <b>Tested applications</b> | <b>Suitable for:</b> WB  |
| <b>Species reactivity</b>  | <b>Reacts with:</b> Mouse<br><b>Predicted to work with:</b> Rat, Sheep, Rabbit, Goat, Cow, Dog, Human, Pig   |
| <b>Immunogen</b>           | Synthetic peptide:<br>C-TDAHNLHSLTSMD<br>, corresponding to C terminal amino acids 193-206 of Human Myogenin (NP_002470.2).<br><a href="#">Run BLAST with</a> <a href="#">Run BLAST with</a> |
| <b>Positive control</b>    | Mouse Skeletal Muscle lysate   |

### Properties

---

|                             |  |
|-----------------------------|--|
| <b>Form</b>                 | Liquid   |
| <b>Storage instructions</b> | Shipped at 4°C. Upon delivery aliquot and store at -20°C. Avoid freeze / thaw cycles.  |
| <b>Storage buffer</b>       | Preservative: 0.02% Sodium Azide<br>Constituents: 0.5% BSA, Tris buffered saline, pH 7.3   |
| <b>Purity</b>               | Immunogen affinity purified  |
| <b>Purification notes</b>   | ab103924 was purified from goat serum by ammonium sulphate precipitation followed by antigen affinity chromatography using the immunizing peptide. |
| <b>Clonality</b>            | Polyclonal   |
| <b>Isotype</b>              | IgG  |

### Applications

---

Our [Abpromise guarantee](#) covers the use of **ab103924** in the following tested applications.

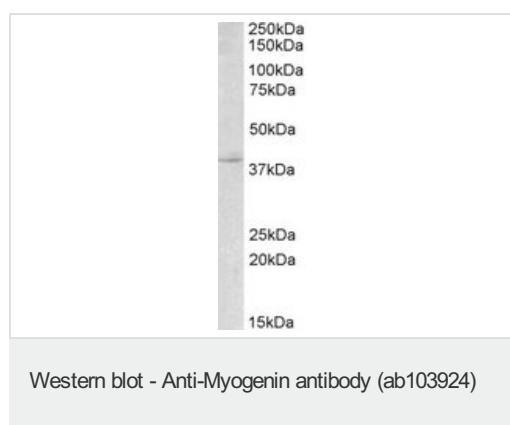
The application notes include recommended starting dilutions; optimal dilutions/concentrations should be determined by the end user.

| Application | Abreviews | Notes  |
|-------------|-----------|--|
| WB          |           | Use a concentration of 2 - 4 µg/ml. Detects a band of approximately 38 kDa (predicted molecular weight: 25 kDa). |

## Target

|                              |  |
|------------------------------|--|
| <b>Function</b>              | Involved in muscle differentiation (myogenic factor). Induces fibroblasts to differentiate into myoblasts. Probable sequence specific DNA-binding protein. |
| <b>Sequence similarities</b> | Contains 1 basic helix-loop-helix (bHLH) domain.   |
| <b>Cellular localization</b> | Nucleus.   |

## Images



Anti-Myogenin antibody (ab103924) at 2 µg/ml  
+ Mouse Skeletal Muscle lysate in RIPA buffer  
at 35 µg

Developed using the ECL technique.

**Predicted band size:** 25 kDa

**Observed band size:** ~38 kDa

**Please note:** All products are "FOR RESEARCH USE ONLY AND ARE NOT INTENDED FOR DIAGNOSTIC OR THERAPEUTIC USE"

## Our Abpromise to you: Quality guaranteed and expert technical support

- Replacement or refund for products not performing as stated on the datasheet
- Valid for 12 months from date of delivery
- Response to your inquiry within 24 hours
- We provide support in Chinese, English, French, German, Japanese and Spanish
- Extensive multi-media technical resources to help you
- We investigate all quality concerns to ensure our products perform to the highest standards

If the product does not perform as described on this datasheet, we will offer a refund or replacement. For full details of the Abpromise, please visit <https://www.abcam.com/abpromise> or contact our technical team.

## Terms and conditions

- Guarantee only valid for products bought direct from Abcam or one of our authorized distributors