

Product datasheet

Anti-NECAP1 antibody ab112090

1 Image

Overview

Product name	Anti-NECAP1 antibody
Description	Rabbit polyclonal to NECAP1
Host species	Rabbit
Tested applications	Suitable for: WB
Species reactivity	Reacts with: Mouse Predicted to work with: Rat, Rabbit, Horse, Chicken, Guinea pig, Cow, Cat, Dog
Immunogen	Synthetic peptide corresponding to a region within internal sequence amino acids 90-139 (RYFVIRIQDG TGRSAFIGIG FTDRGDAFDF NVSLQDHFkw VKQETEISKE) of Mouse NECAP1 protein (NP_080543). Run BLAST with ExPASy Run BLAST with NCBI
Positive control	Mouse spleen lysate

Properties

Form	Liquid
Storage instructions	Shipped at 4°C. Upon delivery aliquot and store at -20°C. Avoid repeated freeze / thaw cycles.
Storage buffer	Preservative: 0.09% Sodium azide Constituents: 2% Sucrose, PBS
Purity	Protein A purified
Clonality	Polyclonal
Isotype	IgG

Applications

Our [Abpromise guarantee](#) covers the use of **ab112090** in the following tested applications.

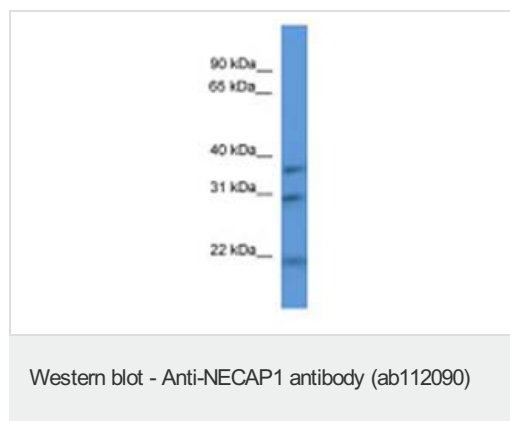
The application notes include recommended starting dilutions; optimal dilutions/concentrations should be determined by the end user.

Application	Abreviews	Notes
WB		Use a concentration of 0.2 - 1 µg/ml. Predicted molecular weight: 30 kDa. Good results were obtained when blocked with 5% non-fat dry milk in 0.05% PBS-T.

Target

Function	Involved in endocytosis.
Sequence similarities	Belongs to the NECAP family.
Domain	The WXXF motifs mediate binding of accessory proteins to the ear-domain of AP-1, GGAs and AP-2 through hydrophobic interactions. Selective binding to the GAE domains of AP-1 or to the alpha-ear domain of AP-2 is tuned by the acidic context surrounding the motif and the properties of the second residue of the motif itself. The WXXF motif 1, which is preceded by an acidic residue and has a glycine in second position mediates specific interaction with AP-1. The WXXF motif 2, which is followed by the C-terminal carboxyl group negative charge, allows specific interaction with AP-2.
Cellular localization	Cytoplasmic vesicle > clathrin-coated vesicle membrane. Cell membrane. Colocalizes with AP-2 at the plasma membrane.

Images



Anti-NECAP1 antibody (ab112090) at 1 µg/ml
+ Mouse spleen lysate at 10 µg

Predicted band size: 30 kDa

Please note: All products are "FOR RESEARCH USE ONLY AND ARE NOT INTENDED FOR DIAGNOSTIC OR THERAPEUTIC USE"

Our Abpromise to you: Quality guaranteed and expert technical support

- Replacement or refund for products not performing as stated on the datasheet
- Valid for 12 months from date of delivery
- Response to your inquiry within 24 hours
- We provide support in Chinese, English, French, German, Japanese and Spanish
- Extensive multi-media technical resources to help you
- We investigate all quality concerns to ensure our products perform to the highest standards

If the product does not perform as described on this datasheet, we will offer a refund or replacement. For full details of the Abpromise, please visit <https://www.abcam.com/abpromise> or contact our technical team.

Terms and conditions

- Guarantee only valid for products bought direct from Abcam or one of our authorized distributors