

Product datasheet

Anti-NEDL2 antibody ab92711

[2 Images](#)

Overview

Product name	Anti-NEDL2 antibody
Description	Rabbit polyclonal to NEDL2
Host species	Rabbit
Tested applications	Suitable for: WB, ELISA, ICC/IF
Species reactivity	Reacts with: Human
Immunogen	Synthetic peptide derived from an internal region of Human NEDL2.
Positive control	Extracts from HepG2 and LOVO cells. This antibody gave a positive result when used in the following formaldehyde fixed cell lines: A549

Properties

Form	Liquid
Storage instructions	Shipped at 4°C. Upon delivery aliquot and store at -20°C. Avoid repeated freeze / thaw cycles.
Storage buffer	pH: 7.40 Preservative: 0.02% Sodium azide Constituents: PBS, 50% Glycerol, 0.87% Sodium chloride
	Without Mg ²⁺ and Ca ²⁺
Purity	Immunogen affinity purified
Purification notes	The antibody was affinity purified from rabbit antiserum by affinity chromatography using epitope specific immunogen.
Clonality	Polyclonal
Isotype	IgG

Applications

Our [Abpromise guarantee](#) covers the use of **ab92711** in the following tested applications.

The application notes include recommended starting dilutions; optimal dilutions/concentrations should be determined by the end user.

Application	Abreviews	Notes
WB		
ELISA		
ICC/IF		

Application notes

ELISA: 1/10000.
 WB: 1/500 - 1/1000. Predicted molecular weight: 176 kDa.

Not yet tested in other applications.
 Optimal dilutions/concentrations should be determined by the end user.

Target

Function

E3 ubiquitin-protein ligase that mediates ubiquitination of TP73. Acts to stabilize TP73 and enhance activation of transcription by TP73.

Tissue specificity

Predominantly expressed in adult brain, lung and heart.

Pathway

Protein modification; protein ubiquitination.

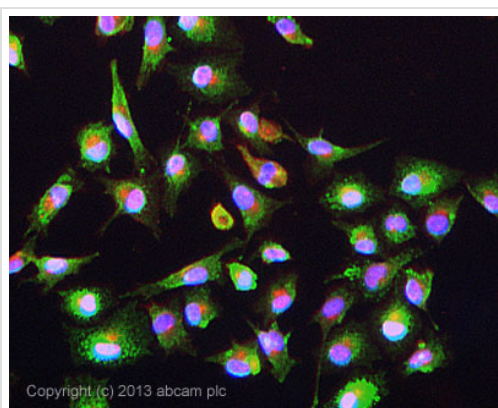
Sequence similarities

Contains 1 C2 domain.
 Contains 1 HECT (E6AP-type E3 ubiquitin-protein ligase) domain.
 Contains 2 WW domains.

Cellular localization

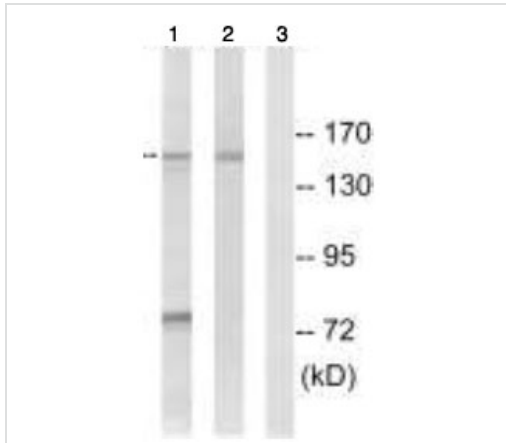
Cytoplasm.

Images



ICC/IF image of ab92711 stained A549 cells. The cells were 4% formaldehyde fixed (10 min) and then incubated in 1%BSA / 10% normal goat serum / 0.3M glycine in 0.1% PBS-Tween for 1h to permeabilise the cells and block non-specific protein-protein interactions. The cells were then incubated with the antibody ab92711 at 1µg/ml overnight at +4°C. The secondary antibody (green) was DyLight® 488 goat anti- rabbit (ab96899) IgG (H+L) used at a 1/250 dilution for 1h. Alexa Fluor® 594 WGA was used to label plasma membranes (red) at a 1/200 dilution for 1h. DAPI was used to stain the cell nuclei (blue) at a concentration of 1.43µM.

Immunocytochemistry/ Immunofluorescence - Anti-NEDL2 antibody (ab92711)



Western blot - Anti-NEDL2 antibody (ab92711)

All lanes : Anti-NEDL2 antibody (ab92711) at 1/500 dilution

Lane 1 : HepG2 cell extracts

Lane 2 : LOVO cell extracts

Lane 3 : LOVO cell extracts with immunizing peptide at 10 µg

Lysates/proteins at 30 µg per lane.

Predicted band size: 176 kDa

Please note: All products are "FOR RESEARCH USE ONLY AND ARE NOT INTENDED FOR DIAGNOSTIC OR THERAPEUTIC USE"

Our Abpromise to you: Quality guaranteed and expert technical support

- Replacement or refund for products not performing as stated on the datasheet
- Valid for 12 months from date of delivery
- Response to your inquiry within 24 hours
- We provide support in Chinese, English, French, German, Japanese and Spanish
- Extensive multi-media technical resources to help you
- We investigate all quality concerns to ensure our products perform to the highest standards

If the product does not perform as described on this datasheet, we will offer a refund or replacement. For full details of the Abpromise, please visit <https://www.abcam.com/abpromise> or contact our technical team.

Terms and conditions

- Guarantee only valid for products bought direct from Abcam or one of our authorized distributors