


Product datasheet

Anti-NETO1 antibody ab111374

[1 Abreviews](#) [2 Images](#)

Overview

Product name	Anti-NETO1 antibody
Description	Rabbit polyclonal to NETO1
Host species	Rabbit
Tested applications	Suitable for: IHC-P, WB
Species reactivity	Reacts with: Human Predicted to work with: Mouse, Rat, Rabbit, Horse, Chicken, Guinea pig, Cow, Cat, Dog, Zebrafish 
Immunogen	Synthetic peptide corresponding to a region within C-terminal amino acids 303-352 (MCINNTLVCN GLQNCVYPWD ENHCKEKRKT SLLDQLTNTS GTVIGVTSCI) of Human NETO1 (NP_620416). Run BLAST with ExPASy Run BLAST with NCBI
Positive control	721_B cell lysate.

Properties

Form	Liquid
Storage instructions	Shipped at 4°C. Upon delivery aliquot and store at -20°C. Avoid repeated freeze / thaw cycles.
Storage buffer	Preservative: 0.09% Sodium azide Constituents: 2% Sucrose, PBS
Purity	Immunogen affinity purified
Clonality	Polyclonal
Isotype	IgG

Applications

Our [Abpromise guarantee](#) covers the use of **ab111374** in the following tested applications.

The application notes include recommended starting dilutions; optimal dilutions/concentrations should be determined by the end user.

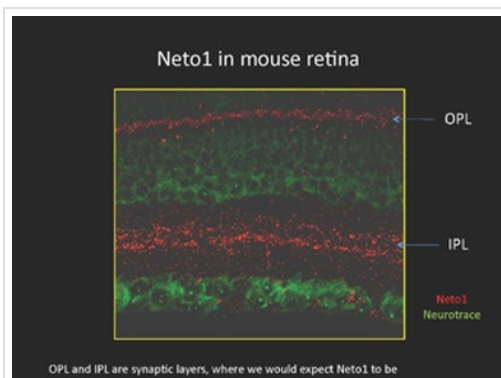
Application	Abreviews	Notes
IHC-P		Use at an assay dependent concentration.

Application	Abreviews	Notes
WB		Use a concentration of 1 µg/ml. Predicted molecular weight: 58 kDa. Good results were obtained when blocked with 5% non-fat dry milk in 0.05% PBS-T.

Target

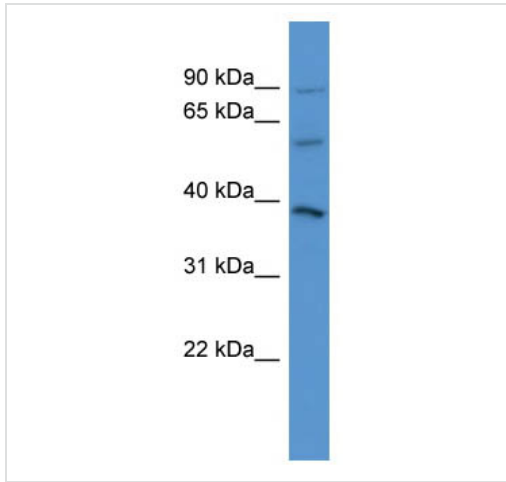
Function	Involved in the development and/or maintenance of neuronal circuitry. Accessory subunit of the neuronal N-methyl-D-aspartate receptor (NMDAR) critical for maintaining the abundance of GRIN2A-containing NMDARs in the postsynaptic density. Regulates long-term NMDA receptor-dependent synaptic plasticity and cognition, at least in the context of spatial learning and memory.
Tissue specificity	Isoform 1 and isoform 2 are retina-specific. Isoform 3 is found in retina as well as at lower levels in adult and fetal brain.
Sequence similarities	Contains 2 CUB domains. Contains 1 LDL-receptor class A domain.
Cellular localization	Secreted; Cell membrane and Cell membrane. Cell junction > synapse > postsynaptic cell membrane > postsynaptic density. Component of the postsynaptic density (PSD) of excitatory synapses.

Images



Immunohistochemistry with mice retinal neurons tissue using anti-NETO1 antibody (ab111374).

Immunohistochemistry (Formalin/PFA-fixed paraffin-embedded sections) - Anti-NETO1 antibody (ab111374)



Western blot - Anti-NETO1 antibody (ab111374)

Anti-NETO1 antibody (ab111374) at 1 μ g/ml +
721_B cell lysate at 10 μ g

Predicted band size: 58 kDa

Gel concentration: 12%.

Please note: All products are "FOR RESEARCH USE ONLY AND ARE NOT INTENDED FOR DIAGNOSTIC OR THERAPEUTIC USE"

Our Abpromise to you: Quality guaranteed and expert technical support

- Replacement or refund for products not performing as stated on the datasheet
- Valid for 12 months from date of delivery
- Response to your inquiry within 24 hours
- We provide support in Chinese, English, French, German, Japanese and Spanish
- Extensive multi-media technical resources to help you
- We investigate all quality concerns to ensure our products perform to the highest standards

If the product does not perform as described on this datasheet, we will offer a refund or replacement. For full details of the Abpromise, please visit <https://www.abcam.com/abpromise> or contact our technical team.

Terms and conditions

- Guarantee only valid for products bought direct from Abcam or one of our authorized distributors