


Product datasheet

Anti-NIF1 antibody ab84551

2 Images

Overview

Product name	Anti-NIF1 antibody
Description	Rabbit polyclonal to NIF1
Host species	Rabbit
Tested applications	Suitable for: IHC-P
Species reactivity	Reacts with: Mouse, Human Predicted to work with: Horse, Chimpanzee, Rhesus monkey, Gorilla, Orangutan 
Immunogen	Synthetic peptide, corresponding to a region within the C terminal amino acids 1300-1342 of human NIF1 (NP_071378.1).
Positive control	Human non small cell lung cancer; mouse squamous cell carcinoma.

Properties

Form	Liquid
Storage instructions	Shipped at 4°C. Upon delivery aliquot and store at -20°C. Avoid freeze / thaw cycles.
Storage buffer	Preservative: 0.09% Sodium Azide Constituents: 0.1% BSA, Tris buffered saline
Purity	Immunogen affinity purified
Purification notes	ab84551 was affinity purified using an epitope specific to NIF1 immobilized on solid support.
Clonality	Polyclonal
Isotype	IgG

Applications

Our [Abpromise guarantee](#) covers the use of **ab84551** in the following tested applications.

The application notes include recommended starting dilutions; optimal dilutions/concentrations should be determined by the end user.

Application	Abreviews	Notes
IHC-P		

Application notes IHC-P: 1/100 - 1/500. Epitope exposure is recommended. Epitope exposure with citrate buffer

will enhance staining.

Likely to work with frozen sections.

Not yet tested in other applications.

Optimal dilutions/concentrations should be determined by the end user.

Target

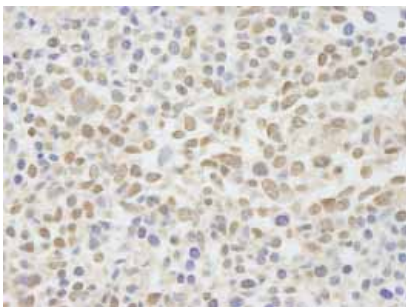
Relevance

NIF1 enhances transcriptional activation by ligand-bound nuclear hormone receptors. However, it does this not by direct interaction with the receptor, but by direct interaction with the nuclear hormone receptor transcriptional coactivator NRC. This protein may function by altering local chromatin structure.

Cellular localization

Nuclear

Images



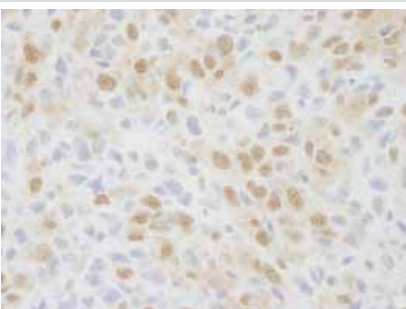
Immunohistochemistry (Formalin/PFA-fixed paraffin-embedded sections) - Anti-NIF1 antibody (ab84551)

Detection of human NIF1 by Immunohistochemistry.

Sample: formalin fixed, paraffin embedded section of human non small cell lung cancer.

Antibody: ab84551 used at a dilution of 1/250.

Detection: DAB staining.



Immunohistochemistry (Formalin/PFA-fixed paraffin-embedded sections) - Anti-NIF1 antibody (ab84551)

Detection of mouse NIF1 by Immunohistochemistry.

Sample: formalin fixed, paraffin embedded section section of mouse squamous cell carcinoma.

Antibody: ab84551 used at a dilution of 1/250.

Detection: DAB staining.

Please note: All products are "FOR RESEARCH USE ONLY AND ARE NOT INTENDED FOR DIAGNOSTIC OR THERAPEUTIC USE"

Our Abpromise to you: Quality guaranteed and expert technical support

- Replacement or refund for products not performing as stated on the datasheet
- Valid for 12 months from date of delivery
- Response to your inquiry within 24 hours

- We provide support in Chinese, English, French, German, Japanese and Spanish
- Extensive multi-media technical resources to help you
- We investigate all quality concerns to ensure our products perform to the highest standards

If the product does not perform as described on this datasheet, we will offer a refund or replacement. For full details of the Abpromise, please visit <https://www.abcam.com/abpromise> or contact our technical team.

Terms and conditions

- Guarantee only valid for products bought direct from Abcam or one of our authorized distributors