

Product datasheet

Anti-NUAK2 antibody - Aminoterminal end ab71398

1 Image

Overview

Product name	Anti-NUAK2 antibody - Aminoterminal end
Description	Rabbit polyclonal to NUAK2 - Aminoterminal end
Host species	Rabbit
Tested applications	Suitable for: WB, ELISA
Species reactivity	Reacts with: Human
Immunogen	KLH conjugated synthetic peptide selected from the N-terminal region of human NUAK2.
Positive control	Transfected/ non-transfected 293 cell lysates.

Properties

Form	Liquid
Storage instructions	Shipped at 4°C. Upon delivery aliquot and store at -20°C. Avoid freeze / thaw cycles.
Storage buffer	Preservative: 0.09% Sodium Azide Constituents: PBS
Purity	Protein G purified
Purification notes	This antibody is purified through a protein G column, eluted with high and low pH buffers and neutralized immediately, followed by dialysis against PBS.
Clonality	Polyclonal
Isotype	IgG

Applications

Our [Abpromise guarantee](#) covers the use of **ab71398** in the following tested applications.

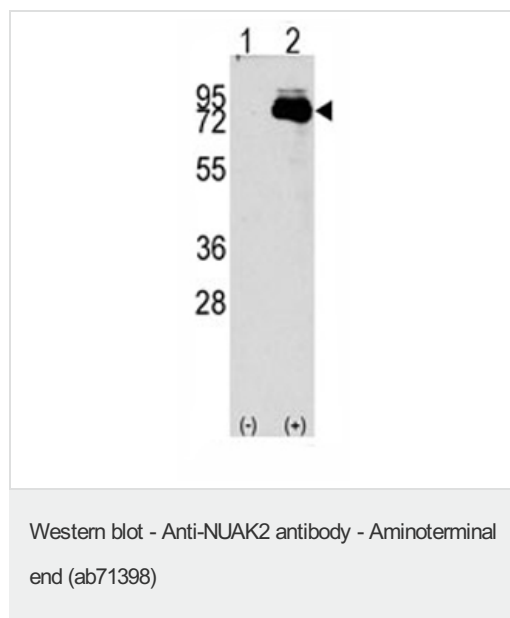
The application notes include recommended starting dilutions; optimal dilutions/concentrations should be determined by the end user.

Application	Abreviews	Notes
WB		1/50 - 1/100. Detects a band of approximately 80 kDa (predicted molecular weight: 70 kDa).
ELISA		1/1000.

Target

Function	Stress-activated kinase involved in tolerance to glucose starvation. Induces cell-cell detachment by increasing F-actin conversion to G-actin. Expression is induced by CD95 or TNF-alpha, via NF-kappa-B. Protects cells from CD95-mediated apoptosis and is required for the increased motility and invasiveness of CD95-activated tumor cells. Able to phosphorylate 'Ser-464' of LATS1.
Sequence similarities	Belongs to the protein kinase superfamily. CAMK Ser/Thr protein kinase family. SNF1 subfamily. Contains 1 protein kinase domain.
Post-translational modifications	Phosphorylated at Thr-208 by STK11/LKB1 in complex with STE20-related adapter-alpha (STRADA) pseudo kinase and CAB39. Autophosphorylated in vitro.
Form	Involved in actin cytoskeleton organization.

Images



All lanes : Anti-NUAK2 antibody -
Aminoterminal end (ab71398) at 1/50 dilution

Lane 1 : Non-transfected 293 cell line lysates

Lane 2 : NUAK2 transfected 293 cell line
lysates

Lysates/proteins at 2 µg per lane.

Predicted band size: 70 kDa

Observed band size: 80 kDa

Please note: All products are "FOR RESEARCH USE ONLY AND ARE NOT INTENDED FOR DIAGNOSTIC OR THERAPEUTIC USE"

Our Abpromise to you: Quality guaranteed and expert technical support

- Replacement or refund for products not performing as stated on the datasheet
- Valid for 12 months from date of delivery
- Response to your inquiry within 24 hours
- We provide support in Chinese, English, French, German, Japanese and Spanish
- Extensive multi-media technical resources to help you
- We investigate all quality concerns to ensure our products perform to the highest standards

If the product does not perform as described on this datasheet, we will offer a refund or replacement. For full details of the Abpromise, please visit <https://www.abcam.com/abpromise> or contact our technical team.

Terms and conditions

- Guarantee only valid for products bought direct from Abcam or one of our authorized distributors