

Product datasheet

Native human Cathepsin H protein ab90385

1 Image

Overview

<b>Product name</b>	Native human Cathepsin H protein
<b>Protein length</b>	Full length protein

Description

<b>Nature</b>	Native
<b>Source</b>	Native
<b>Amino Acid Sequence</b>	
<b>Species</b>	Human

Specifications

Our [Abpromise guarantee](#) covers the use of **ab90385** in the following tested applications.

The application notes include recommended starting dilutions; optimal dilutions/concentrations should be determined by the end user.

<b>Biological activity</b>	Activity: greater than 1 unit per mg protein. One unit is defined as the amount of enzyme that hydrolyzes one $\mu$ mole of L-arginine-beta-naphthylamide per minute at 40°C using 75 mM potassium phosphate, pH 6.8, with 1 mM EDTA and 3 mM cysteine as the activation buffer.
----------------------------	----------------------------------------------------------------------------------------------------------------------------------------------------------------------------------------------------------------------------------------------------------------------------------

<b>Applications</b>	Functional Studies Western blot
---------------------	------------------------------------

<b>Form</b>	Liquid
-------------	--------

Preparation and Storage

<b>Stability and Storage</b>	Shipped on dry ice. Upon delivery aliquot and store at -80°C. Avoid freeze / thaw cycles. pH: 4.50 Constituents: 0.164% Sodium acetate, 0.0292% EDTA, 0.58% Sodium chloride This product is an active protein and may elicit a biological response in vivo, handle with caution.
------------------------------	-------------------------------------------------------------------------------------------------------------------------------------------------------------------------------------------------------------------------------------------------------------------------------------------

General Info

<b>Function</b>	Important for the overall degradation of proteins in lysosomes.
-----------------	-----------------------------------------------------------------

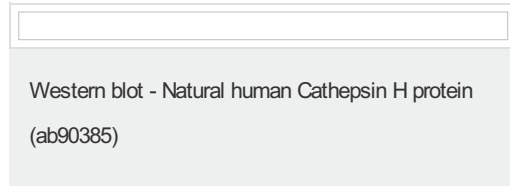
**Sequence similarities** Belongs to the peptidase C1 family.

**Cellular localization** Lysosome.

---

## Images

---



**Please note:** All products are "FOR RESEARCH USE ONLY AND ARE NOT INTENDED FOR DIAGNOSTIC OR THERAPEUTIC USE"

## Our Abpromise to you: Quality guaranteed and expert technical support

---

- Replacement or refund for products not performing as stated on the datasheet
- Valid for 12 months from date of delivery
- Response to your inquiry within 24 hours
- We provide support in Chinese, English, French, German, Japanese and Spanish
- Extensive multi-media technical resources to help you
- We investigate all quality concerns to ensure our products perform to the highest standards

If the product does not perform as described on this datasheet, we will offer a refund or replacement. For full details of the Abpromise, please visit <https://www.abcam.com/abpromise> or contact our technical team.

## Terms and conditions

---

- Guarantee only valid for products bought direct from Abcam or one of our authorized distributors