

Product datasheet

Anti-Nectin 3 antibody ab63931

★★★★★ 2 Abreviews 12 References 1 Image

Overview

Product name	Anti-Nectin 3 antibody
Description	Rabbit polyclonal to Nectin 3
Host species	Rabbit
Tested applications	Suitable for: IHC-Fr, WB
Species reactivity	Reacts with: Mouse, Rat
Immunogen	Synthetic peptide corresponding to a region surrounding amino acid 536 of mouse nectin 3
Positive control	3T3 cell lysate; Rat kidney lysate

Properties

Form	Liquid
Storage instructions	Shipped at 4°C. Upon delivery aliquot and store at -20°C. Avoid freeze / thaw cycles.
Storage buffer	Preservative: 0.01% Thimerosal (merthiolate) Constituents: 30% Glycerol, 0.5% BSA, PBS, pH 7.2
Purity	Protein A purified
Clonality	Polyclonal
Isotype	IgG

Applications

Our [Abpromise guarantee](#) covers the use of **ab63931** in the following tested applications.

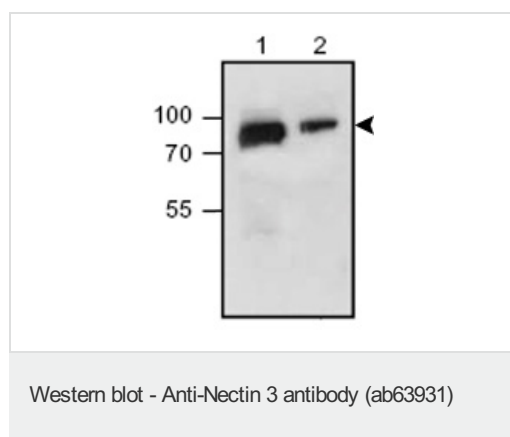
The application notes include recommended starting dilutions; optimal dilutions/concentrations should be determined by the end user.

Application	Abreviews	Notes
IHC-Fr	★★★★★	Use at an assay dependent concentration. See Abreview.
WB	★★★★★	Use a concentration of 0.5 - 4 µg/ml. Detects a band of approximately 83 kDa (predicted molecular weight: 83 kDa).

Target

Function	Plays a role in cell-cell adhesion through heterophilic trans-interactions with nectin-like proteins or nectins, such as trans-interaction with PVRL2/nectin-2 at Sertoli-spermatid junctions. Trans-interaction with PVR induces activation of CDC42 and RAC small G proteins through common signaling molecules such as SRC and RAP1. Also involved in the formation of cell-cell junctions, including adherens junctions and synapses. Induces endocytosis-mediated down-regulation of PVR from the cell surface, resulting in reduction of cell movement and proliferation. Plays a role in the morphology of the ciliary body.
Tissue specificity	Predominantly expressed in testis and placenta as well as in many cell lines, including epithelial cell lines.
Sequence similarities	Belongs to the nectin family. Contains 2 Ig-like C2-type (immunoglobulin-like) domains. Contains 1 Ig-like V-type (immunoglobulin-like) domain.
Cellular localization	Cell membrane.

Images



All lanes : Anti-Nectin 3 antibody (ab63931)
at 1 μ g

Lane 1 : Rat kidney lysate

Lane 2 : 3T3 cell lysate

Lysates/proteins at 30 μ g per lane.

Predicted band size: 83 kDa

Observed band size: 83 kDa

Please note: All products are "FOR RESEARCH USE ONLY AND ARE NOT INTENDED FOR DIAGNOSTIC OR THERAPEUTIC USE"

Our Abpromise to you: Quality guaranteed and expert technical support

- Replacement or refund for products not performing as stated on the datasheet
- Valid for 12 months from date of delivery
- Response to your inquiry within 24 hours
- We provide support in Chinese, English, French, German, Japanese and Spanish
- Extensive multi-media technical resources to help you
- We investigate all quality concerns to ensure our products perform to the highest standards

If the product does not perform as described on this datasheet, we will offer a refund or replacement. For full details of the Abpromise, please visit <https://www.abcam.com/abpromise> or contact our technical team.

Terms and conditions

- Guarantee only valid for products bought direct from Abcam or one of our authorized distributors