

## Product datasheet

# Anti-Neurotensin Receptor 1 antibody [B-N6] ab34353

1 Image

### Overview

<b>Product name</b>	Anti-Neurotensin Receptor 1 antibody [B-N6]
<b>Description</b>	Mouse monoclonal [B-N6] to Neurotensin Receptor 1
<b>Host species</b>	Mouse
<b>Tested applications</b>	<b>Suitable for:</b> Flow Cyt, Inhibition Assay
<b>Species reactivity</b>	<b>Reacts with:</b> Human
<b>Immunogen</b>	Tissue/ cell preparation -(Human): Neurotensin Receptor 1 transfected CHO cell line.

### Properties

<b>Form</b>	Liquid
<b>Storage instructions</b>	Shipped at 4°C. Store at +4°C short term (1-2 weeks). Upon delivery aliquot. Store at -20°C or -80°C. Avoid freeze / thaw cycle.
<b>Storage buffer</b>	treated to remove endotoxins.Constituents: PBS
<b>Purification notes</b>	Gel filtration.
<b>Clonality</b>	Monoclonal
<b>Clone number</b>	B-N6
<b>Myeloma</b>	x63-Ag8.653
<b>Isotype</b>	IgM

### Applications

Our [Abpromise guarantee](#) covers the use of **ab34353** in the following tested applications.

The application notes include recommended starting dilutions; optimal dilutions/concentrations should be determined by the end user.

Application	Abreviews	Notes
-------------	-----------	-------

Flow Cyt

Inhibition Assay

<b>Application notes</b>	Flow Cyt: Use at an assay dependent dilution. Inhib: Use at an assay dependent dilution.
--------------------------	---

ab34353 inhibits neurotensin binding to its receptor.

Not yet tested in other applications.

Optimal dilutions/concentrations should be determined by the end user.

## Target

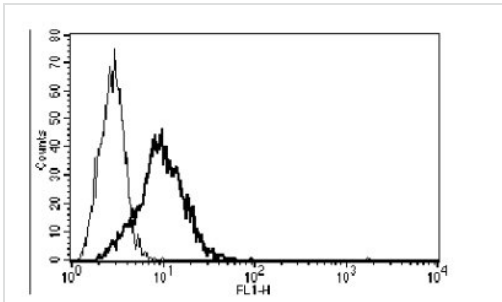
### Relevance

Neurotensin receptor 1 belongs to the large superfamily of G-protein coupled receptors. NTSR1 mediates the multiple functions of neurotensin, such as hypotension, hyperglycemia, hypothermia, antinociception, and regulation of intestinal motility and secretion. NTR1 has been reported in brain, pancreas, and small intestine. ESTs have been isolated from brain and colon libraries.

### Cellular localization

Cell Membrane, Endoplasmic reticulum, Golgi Apparatus and Plasma membrane. Integral membrane protein.

## Images



Flow Cytometry - Anti-Neurotensin Receptor 1 antibody [B-N6] (ab34353)

**Please note:** All products are "FOR RESEARCH USE ONLY AND ARE NOT INTENDED FOR DIAGNOSTIC OR THERAPEUTIC USE"

## Our Promise to you: Quality guaranteed and expert technical support

- Replacement or refund for products not performing as stated on the datasheet
- Valid for 12 months from date of delivery
- Response to your inquiry within 24 hours
- We provide support in Chinese, English, French, German, Japanese and Spanish
- Extensive multi-media technical resources to help you
- We investigate all quality concerns to ensure our products perform to the highest standards

If the product does not perform as described on this datasheet, we will offer a refund or replacement. For full details of the Abpromise, please visit <https://www.abcam.com/abpromise> or contact our technical team.

## Terms and conditions

- Guarantee only valid for products bought direct from Abcam or one of our authorized distributors