


Product datasheet

Anti-Nocturnin antibody ab22850

[1 Abreviews](#) [3 Images](#)

Overview

Product name	Anti-Nocturnin antibody
Description	Rabbit polyclonal to Nocturnin
Host species	Rabbit
Specificity	Although there is a high homology with mouse, this antibody also has the potential to cross react with another mouse protein of similar molecular weight therefore this antibody is not suitable for use in mouse.
Tested applications	Suitable for: WB, IHC-P
Species reactivity	Reacts with: Human Predicted to work with: Rat, Cow 
Immunogen	A region within a synthetic peptide: RLYSALAKTL NSSAASQHPE YLVSPDPEHL EPIDPKELLE ECRAVLHTRP, corresponding to N terminal amino acids 73-122 of Human Nocturnin Run BLAST with ExPASy Run BLAST with NCBI
Positive control	Human lung tissue (IHC-P), Daudi cell lysate (western blot).

Properties

Form	Liquid
Storage instructions	Shipped at 4°C. Upon delivery aliquot and store at -20°C or -80°C. Avoid repeated freeze / thaw cycles.
Storage buffer	Preservative: 0.09% Sodium azide Constituents: 2% Sucrose, PBS
Purity	Protein A purified
Clonality	Polyclonal
Isotype	IgG

Applications

Our [Abpromise guarantee](#) covers the use of **ab22850** in the following tested applications.

The application notes include recommended starting dilutions; optimal dilutions/concentrations should be determined by the end user.

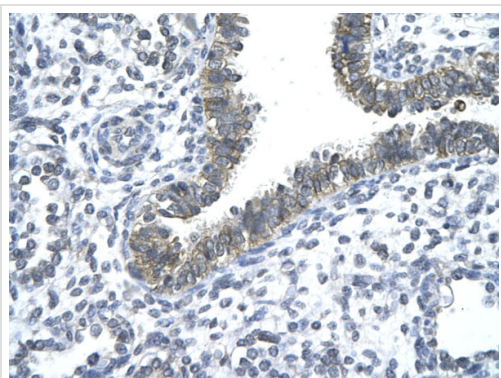
Application	Abreviews	Notes
WB		Use a concentration of 1 - 2 µg/ml. Detects a band of approximately 40 kDa. Good results were obtained when blocked with 5% non-fat dry milk in 0.05% PBS-T.
IHC-P		Use at an assay dependent concentration.

Target

Relevance

CCRN4L is highly similar to Nocturnin, a gene identified as a circadian clock regulated gene in *Xenopus laevis*. This protein and Nocturnin protein share similarity with the C terminal domain of a yeast transcription factor, carbon catabolite repression 4 (CCR4). The mRNA abundance of a similar gene in mouse has been shown to exhibit circadian rhythmicity, which suggests a role for this protein in clock function or as a circadian clock effector.

Images



Immunohistochemistry (Formalin/PFA-fixed paraffin-embedded sections) analysis of human lung tissue labelling Nocturnin with ab22850 at 4.0-8.0µg/ml. Positive staining seen in the bronchiole epithelium.
Magnification: 400X.

Immunohistochemistry (Formalin/PFA-fixed paraffin-embedded sections) - Anti-Nocturnin antibody (ab22850)

90 kDa__
60 kDa__
42 kDa__
32 kDa__
23 kDa__



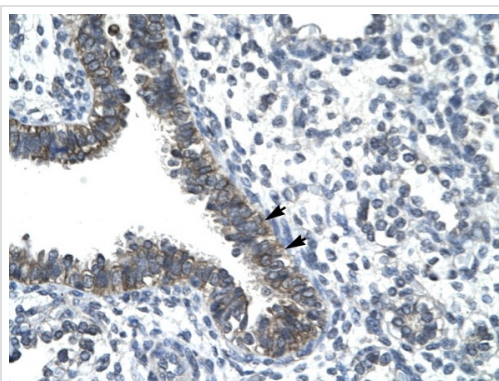
Western blot - Anti-Nocturnin antibody (ab22850)

Anti-Nocturnin antibody (ab22850) at 4 $\mu\text{g/ml}$

+ Daudi cell lysate

Observed band size: 40 kDa

Gel concentration: 12%



Immunohistochemistry (Formalin/PFA-fixed paraffin-embedded sections) - Anti-Nocturnin antibody (ab22850)

Paraffin-embedded Human lung tissue. Cells with positive label: epithelial cells of bronchiole (indicated by arrows). Antibody concentration: 4-8 $\mu\text{g/ml}$. Magnification: 400x.

Please note: All products are "FOR RESEARCH USE ONLY AND ARE NOT INTENDED FOR DIAGNOSTIC OR THERAPEUTIC USE"

Our Abpromise to you: Quality guaranteed and expert technical support

- Replacement or refund for products not performing as stated on the datasheet
- Valid for 12 months from date of delivery
- Response to your inquiry within 24 hours
- We provide support in Chinese, English, French, German, Japanese and Spanish
- Extensive multi-media technical resources to help you
- We investigate all quality concerns to ensure our products perform to the highest standards

If the product does not perform as described on this datasheet, we will offer a refund or replacement. For full details of the Abpromise, please visit <https://www.abcam.com/abpromise> or contact our technical team.

Terms and conditions

- Guarantee only valid for products bought direct from Abcam or one of our authorized distributors