


Product datasheet

Anti-Nup107 antibody ab105026

[2 Images](#)

Overview

Product name	Anti-Nup107 antibody
Description	Goat polyclonal to Nup107
Host species	Goat
Tested applications	Suitable for: WB
Species reactivity	Reacts with: Mouse, Human Predicted to work with: Rat, Cow, Dog 
Immunogen	Synthetic peptide: PLPAEDDNAIREH by a Cysteine residue linker, corresponding to amino acids 735-747 of Human Nup107 (NP_065134.1) Run BLAST with Run BLAST with
Positive control	Peripheral Blood Lymphocyte lysate

Properties

Form	Liquid
Storage instructions	Shipped at 4°C. Upon delivery aliquot and store at -20°C. Avoid freeze / thaw cycles.
Storage buffer	Preservative: 0.02% Sodium Azide Constituents: 0.5% BSA, Tris buffered saline, pH 7.3
Purity	Immunogen affinity purified
Purification notes	Purified from goat serum by ammonium sulphate precipitation followed by antigen affinity chromatography using the immunizing peptide.
Clonality	Polyclonal
Isotype	IgG

Applications

Our [Abpromise guarantee](#) covers the use of **ab105026** in the following tested applications.

The application notes include recommended starting dilutions; optimal dilutions/concentrations should be determined by the end user.

Application	Abreviews	Notes
WB		Use a concentration of 1 - 3 µg/ml. Predicted molecular weight: 106 kDa.

Target

Function	Plays a role in the nuclear pore complex (NPC) assembly and/or maintenance. Required for the assembly of peripheral proteins into the NPC. May anchor NUP62 to the NPC.
Tissue specificity	Ubiquitously expressed in fetal and adult tissues.
Involvement in disease	Nephrotic syndrome 11
Sequence similarities	Belongs to the nucleoporin Nup84/Nup107 family.
Cellular localization	Nucleus membrane. Nucleus, nuclear pore complex. Chromosome, centromere, kinetochore. Located on both the cytoplasmic and nuclear sides of the NPC core structure (PubMed:11564755). During mitosis, localizes to the kinetochores (PubMed:11564755). Dissociates from the disassembled NPC structure late during prophase of mitosis (PubMed:11564755).

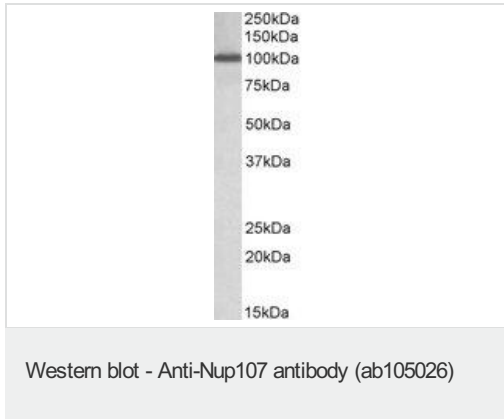
Images



Anti-Nup107 antibody (ab105026) at 2 µg +
NIH3T3 nuclear cell lysate at 35 µg

Developed using the ECL technique.

Predicted band size: 106 kDa



Anti-Nup107 antibody (ab105026) at 1 µg/ml
+ Peripheral Blood Lymphocytes lysate at 35
µg

Developed using the ECL technique.

Predicted band size: 106 kDa

Exposure time: 1 hour

Please note: All products are "FOR RESEARCH USE ONLY AND ARE NOT INTENDED FOR DIAGNOSTIC OR THERAPEUTIC USE"

Our Abpromise to you: Quality guaranteed and expert technical support

- Replacement or refund for products not performing as stated on the datasheet
- Valid for 12 months from date of delivery
- Response to your inquiry within 24 hours
- We provide support in Chinese, English, French, German, Japanese and Spanish
- Extensive multi-media technical resources to help you
- We investigate all quality concerns to ensure our products perform to the highest standards

If the product does not perform as described on this datasheet, we will offer a refund or replacement. For full details of the Abpromise, please visit <https://www.abcam.com/abpromise> or contact our technical team.

Terms and conditions

- Guarantee only valid for products bought direct from Abcam or one of our authorized distributors