

Product datasheet

Anti-OCC1 antibody ab83945

1 References 1 Image

Overview

<b>Product name</b>	Anti-OCC1 antibody
<b>Description</b>	Rabbit polyclonal to OCC1
<b>Host species</b>	Rabbit
<b>Tested applications</b>	<b>Suitable for:</b> WB, ELISA, IHC-P
<b>Species reactivity</b>	<b>Reacts with:</b> Human
<b>Immunogen</b>	A 7 amino acid peptide near the carboxy terminus of Human OCC1 (AAH61920).
<b>Positive control</b>	293 cell lysate; human spleen tissue.

Properties

<b>Form</b>	Liquid
<b>Storage instructions</b>	Shipped at 4°C. Store at +4°C.
<b>Storage buffer</b>	Preservative: 0.02% Sodium azide Constituent: PBS
<b>Purity</b>	Immunogen affinity purified
<b>Purification notes</b>	ab83945 is affinity chromatography purified via peptide column.
<b>Clonality</b>	Polyclonal
<b>Isotype</b>	IgG

Applications

Our [Abpromise guarantee](#) covers the use of **ab83945** in the following tested applications.

The application notes include recommended starting dilutions; optimal dilutions/concentrations should be determined by the end user.

Application	Abreviews	Notes
WB		Use a concentration of 2 - 4 µg/ml. Detects a band of approximately 30 kDa (predicted molecular weight: 6 kDa).
ELISA		Use at an assay dependent concentration.

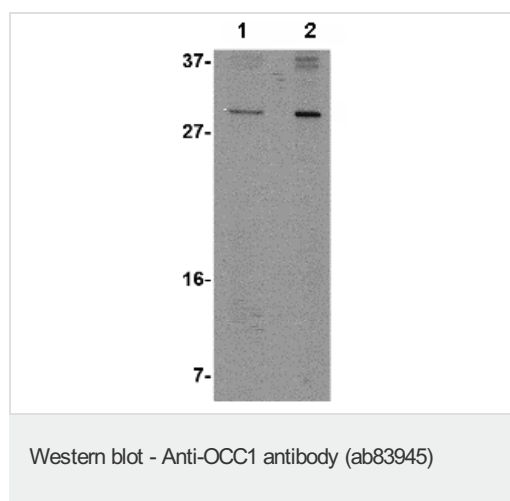
Application	Abreviews	Notes
IHC-P		Use a concentration of 2.5 µg/ml.

## Target

**Tissue specificity** High expression in placenta, skeletal muscle, kidney and pancreas tissues. Absent or very faint expression in heart, brain, lung and liver. Expressed during adipogenic differentiation of mesenchymal stem cells (at protein level).

**Sequence similarities** Belongs to the OCC1 family.

## Images



**Lane 1** : Anti-OCC1 antibody (ab83945) at 2 µg/ml

**Lane 2** : Anti-OCC1 antibody (ab83945) at 4 µg/ml

**All lanes** : 293 cell lysate

Lysates/proteins at 15 µg per lane.

**Predicted band size:** 6 kDa

**Observed band size:** 30 kDa

[why is the actual band size different from the predicted?](#)

**Please note:** All products are "FOR RESEARCH USE ONLY AND ARE NOT INTENDED FOR DIAGNOSTIC OR THERAPEUTIC USE"

## Our Abpromise to you: Quality guaranteed and expert technical support

- Replacement or refund for products not performing as stated on the datasheet
- Valid for 12 months from date of delivery
- Response to your inquiry within 24 hours
- We provide support in Chinese, English, French, German, Japanese and Spanish
- Extensive multi-media technical resources to help you
- We investigate all quality concerns to ensure our products perform to the highest standards

If the product does not perform as described on this datasheet, we will offer a refund or replacement. For full details of the Abpromise, please visit <https://www.abcam.com/abpromise> or contact our technical team.

## Terms and conditions

- Guarantee only valid for products bought direct from Abcam or one of our authorized distributors