

## Product datasheet

# Anti-OFD1 antibody ab122960

1 Image

### Overview

<b>Product name</b>	Anti-OFD1 antibody
<b>Description</b>	Rabbit polyclonal to OFD1
<b>Host species</b>	Rabbit
<b>Tested applications</b>	<b>Suitable for:</b> WB
<b>Species reactivity</b>	<b>Reacts with:</b> Rat <b>Predicted to work with:</b> Mouse, Horse, Chicken, Guinea pig, Cow, Cat, Dog, Human
<b>Immunogen</b>	Synthetic peptide corresponding to a region within N-terminal amino acids 2-51 (AQSTMPHKCD DVLSQDELRK KLYQTFKDRG ILDTLKTQLR NQLVHELMHP) of Rat OFD1 (NP_001100431). <a href="#">Run BLAST with ExPASy</a> <a href="#">Run BLAST with NCBI</a>
<b>Positive control</b>	Rat liver lysate.

### Properties

<b>Form</b>	Liquid
<b>Storage instructions</b>	Shipped at 4°C. Upon delivery aliquot and store at -20°C. Avoid repeated freeze / thaw cycles.
<b>Storage buffer</b>	Preservative: 0.09% Sodium azide Constituents: 2% Sucrose, PBS
<b>Purity</b>	Immunogen affinity purified
<b>Clonality</b>	Polyclonal
<b>Isotype</b>	IgG

### Applications

Our [Abpromise guarantee](#) covers the use of **ab122960** in the following tested applications.

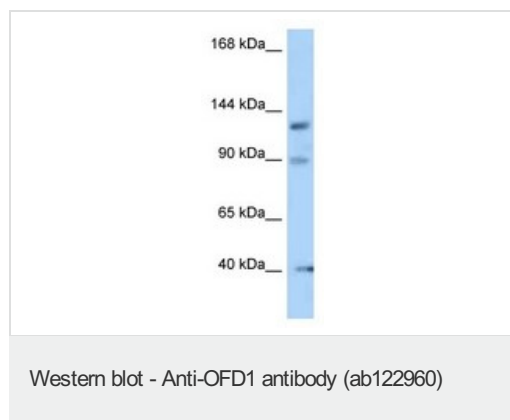
The application notes include recommended starting dilutions; optimal dilutions/concentrations should be determined by the end user.

Application	Abreviews	Notes
WB		Use a concentration of 1 µg/ml. Predicted molecular weight: 118 kDa. Good results were obtained when blocked with 5% non-fat dry milk in 0.05% PBS-T.

## Target

<b>Function</b>	Component of the centrioles controlling mother and daughter centrioles length. Recruits to the centriole IFT88 and centriole distal appendage-specific proteins including CEP164. Involved in the biogenesis of the cilium, a centriole-associated function. The cilium is a cell surface projection found in many vertebrate cells required to transduce signals important for development and tissue homeostasis. Plays an important role in development by regulating Wnt signaling and the specification of the left-right axis. Only OFD1 localized at the centriolar satellites is removed by autophagy, which is an important step in the ciliogenesis regulation.
<b>Tissue specificity</b>	Widely expressed. Expressed in 9 and 14 weeks old embryos in metanephric mesenchyme, oral mucosa, lung, heart, nasal and cranial cartilage, and brain. Expressed in metanephros, brain, tongue, and limb.
<b>Involvement in disease</b>	Orofaciodigital syndrome 1 Simpson-Golabi-Behmel syndrome 2 Joubert syndrome 10 Retinitis pigmentosa 23
<b>Sequence similarities</b>	Belongs to the OFD1 family. Contains 1 LisH domain.
<b>Cellular localization</b>	Cytoplasm, cytoskeleton, microtubule organizing center, centrosome, centriole. Cytoplasm, cytoskeleton, cilium basal body. Nucleus. Cytoplasm, cytoskeleton, microtubule organizing center, centrosome, centriolar satellite. Localizes to centriole distal ends and to centriolar satellites (PubMed:20230748, PubMed:24121310).

## Images



Anti-OFD1 antibody (ab122960) at 1 µg/ml +  
Rat liver lysate at 10 µg

**Predicted band size:** 118 kDa

Gel concentration: 6-18%

**Please note:** All products are "FOR RESEARCH USE ONLY AND ARE NOT INTENDED FOR DIAGNOSTIC OR THERAPEUTIC USE"

## Our Abpromise to you: Quality guaranteed and expert technical support

- Replacement or refund for products not performing as stated on the datasheet
- Valid for 12 months from date of delivery
- Response to your inquiry within 24 hours
- We provide support in Chinese, English, French, German, Japanese and Spanish

- Extensive multi-media technical resources to help you
- We investigate all quality concerns to ensure our products perform to the highest standards

If the product does not perform as described on this datasheet, we will offer a refund or replacement. For full details of the Abpromise, please visit <https://www.abcam.com/abpromise> or contact our technical team.

### **Terms and conditions**

---

- Guarantee only valid for products bought direct from Abcam or one of our authorized distributors