

## Product datasheet

# Anti-OPA1L antibody ab122401

[2 Images](#)

### Overview

<b>Product name</b>	Anti-OPA1L antibody
<b>Description</b>	Rabbit polyclonal to OPA1L
<b>Host species</b>	Rabbit
<b>Tested applications</b>	<b>Suitable for:</b> IHC-P, WB
<b>Species reactivity</b>	<b>Reacts with:</b> Human
<b>Immunogen</b>	antigen: PLSEPSRSST RPPSIADPDP SDLPVDRAAT KAPGMEPSGS VAGLGELDPG AFLDKDAECR EELLKDDSSSE HGAPDSKEKT PGRHRRFTGD, corresponding to amino acids 160-249 of Human OPA1L according to Q9NX94. <a href="#">Run BLAST with ExPASy</a> <a href="#">Run BLAST with NCBI</a>
<b>Positive control</b>	Human gall bladder tissue, transfected HEK293T cells overexpressing OPA1L with a myc-DDK tag.

### Properties

<b>Form</b>	Liquid
<b>Storage instructions</b>	Shipped at 4°C. Upon delivery aliquot and store at -20°C. Avoid freeze / thaw cycles.
<b>Storage buffer</b>	pH: 7.20 Preservative: 0.02% Sodium azide Constituents: 59% PBS, 40% Glycerol
<b>Purity</b>	Immunogen affinity purified
<b>Clonality</b>	Polyclonal
<b>Isotype</b>	IgG

### Applications

Our [Abpromise guarantee](#) covers the use of **ab122401** in the following tested applications.

The application notes include recommended starting dilutions; optimal dilutions/concentrations should be determined by the end user.

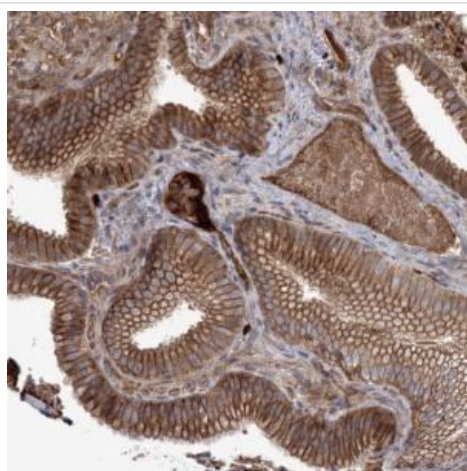
Application	Abreviews	Notes
-------------	-----------	-------

Application	Abreviews	Notes
IHC-P		1/50 - 1/200. Perform heat mediated antigen retrieval with citrate buffer pH 6 before commencing with IHC staining protocol.
WB		1/250 - 1/500.

## Target

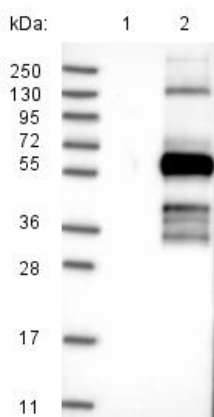
**Cellular localization** Membrane.

## Images



ab122401, at a 1/100 dilution, staining OPA1L in glandular cells of paraffin-embedded Human gall bladder tissue by immunohistochemistry.

Immunohistochemistry (Formalin/PFA-fixed paraffin-embedded sections) - Anti-OPA1L antibody (ab122401)



**All lanes** : Anti-OPA1L antibody (ab122401) at 1/250 dilution

**Lane 1** : Vector only transfected HEK293T lysate

**Lane 2** : Lysate from HEK293T cells overexpressing OPA1L with a C-terminal myc-DDK tag (~3.1 kDa)

Developed using the ECL technique.

Western blot - Anti-OPA1L antibody (ab122401)

**Please note:** All products are "FOR RESEARCH USE ONLY AND ARE NOT INTENDED FOR DIAGNOSTIC OR THERAPEUTIC USE"

## **Our Abpromise to you: Quality guaranteed and expert technical support**

---

- Replacement or refund for products not performing as stated on the datasheet
- Valid for 12 months from date of delivery
- Response to your inquiry within 24 hours
  
- We provide support in Chinese, English, French, German, Japanese and Spanish
- Extensive multi-media technical resources to help you
- We investigate all quality concerns to ensure our products perform to the highest standards

If the product does not perform as described on this datasheet, we will offer a refund or replacement. For full details of the Abpromise, please visit <https://www.abcam.com/abpromise> or contact our technical team.

## **Terms and conditions**

---

- Guarantee only valid for products bought direct from Abcam or one of our authorized distributors