

Product datasheet

Anti-PACSIN1 antibody ab2532

1 Image

Overview

Product name	Anti-PACSIN1 antibody
Description	Goat polyclonal to PACSIN1
Host species	Goat
Tested applications	Suitable for: WB, ELISA
Species reactivity	Reacts with: Human
Immunogen	Synthetic peptide: SSSYDEASLAPEET , corresponding to N terminal amino acids 2-15 of Human PACSIN1. Run BLAST with Run BLAST with
Positive control	Human Brain lysate.

Properties

Form	Liquid
Storage instructions	Shipped at 4°C. Upon delivery aliquot and store at -20°C or -80°C. Avoid repeated freeze / thaw cycles.
Storage buffer	Preservative: 0.02% Sodium Azide Constituents: 0.5% BSA, Tris buffered saline. pH 7.3
Purity	Immunogen affinity purified
Purification notes	Purified from goat serum by ammonium sulphate precipitation followed by antigen affinity chromatography using the immunizing peptide.
Clonality	Polyclonal
Isotype	IgG

Applications

Our [Abpromise guarantee](#) covers the use of **ab2532** in the following tested applications.

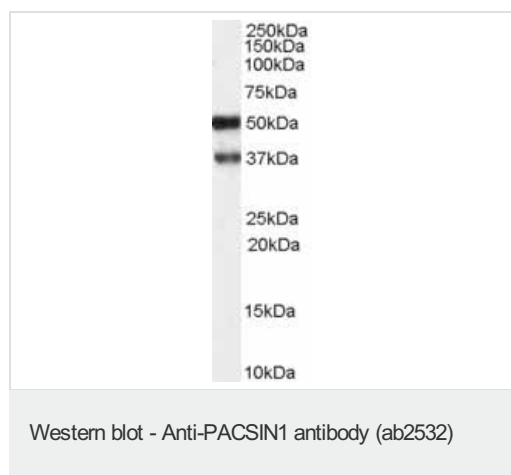
The application notes include recommended starting dilutions; optimal dilutions/concentrations should be determined by the end user.

Application	Abreviews	Notes
WB		Use a concentration of 1 - 3 µg/ml. Detects a band of approximately 50,37 kDa (predicted molecular weight: 50 kDa).
ELISA		1/32000.

Target

Function	May play a role in vesicle formation and transport.
Tissue specificity	Highly expressed in brain and in a lesser extent in heart, pancreas and liver.
Sequence similarities	Belongs to the PACSIN family. Contains 1 FCH domain. Contains 1 SH3 domain.
Post-translational modifications	Phosphorylated by casein kinase 2 (CK2) and protein kinase C (PKC).
Cellular localization	Cytoplasm. Colocalizes with dynamin I at vesicular structures in the cell body and neurites.

Images



Anti-PACSIN1 antibody (ab2532) at 1 µg/ml +
HUman Brain (hippocampus) lysate at 35 µg

Predicted band size: 50 kDa

Observed band size: 50 kDa

Additional bands at: 37 kDa. We are unsure
as to the identity of these extra bands.

Primary incubation was 1 hour. Detected by
chemiluminescence.

Please note: All products are "FOR RESEARCH USE ONLY AND ARE NOT INTENDED FOR DIAGNOSTIC OR THERAPEUTIC USE"

Our Abpromise to you: Quality guaranteed and expert technical support

- Replacement or refund for products not performing as stated on the datasheet
- Valid for 12 months from date of delivery
- Response to your inquiry within 24 hours
- We provide support in Chinese, English, French, German, Japanese and Spanish
- Extensive multi-media technical resources to help you

- We investigate all quality concerns to ensure our products perform to the highest standards

If the product does not perform as described on this datasheet, we will offer a refund or replacement. For full details of the Abpromise, please visit <https://www.abcam.com/abpromise> or contact our technical team.

Terms and conditions

- Guarantee only valid for products bought direct from Abcam or one of our authorized distributors