

## Product datasheet

# Anti-PD-L1 antibody [28-8] (Alexa Fluor® 647) ab209960

Recombinant RabMAB

[2 References](#) [2 Images](#)

### Overview

<b>Product name</b>	Anti-PD-L1 antibody [28-8] (Alexa Fluor® 647)
<b>Description</b>	Rabbit monoclonal [28-8] to PD-L1 (Alexa Fluor® 647)
<b>Host species</b>	Rabbit
<b>Conjugation</b>	Alexa Fluor® 647. Ex: 652nm, Em: 668nm
<b>Tested applications</b>	<b>Suitable for:</b> Flow Cyt, ICC/IF
<b>Species reactivity</b>	<b>Reacts with:</b> Human
<b>Immunogen</b>	Recombinant full length protein corresponding to Human PD-L1 (extracellular). The immunogen contains the specific extracellular domain of huPD-L1 (Phe19-Thr239). See reference for more info - <a href="http://www.ncbi.nlm.nih.gov/pmc/articles/PMC4561627/">www.ncbi.nlm.nih.gov/pmc/articles/PMC4561627/</a> Database link: <a href="#">Q9NZQ7</a>
<b>Positive control</b>	ICC/IF: CHO-PDL1 cells Flow Cyt: CHO-PDL1 cells
<b>General notes</b>	Anti-PD-L1 antibody [28-8] has been used as detector antibody in <b>Human PD-L1 SimpleStep ELISA® kit (ab214565)</b>  Alternative versions available: <a href="#">Anti-PD-L1 antibody [28-8] (ab205921) - Knockout validated</a>  Our RabMAB® technology is a patented hybridoma-based technology for making rabbit monoclonal antibodies. For details on our patents, please refer to <a href="#">RabMab® patents</a>  Alexa Fluor® is a registered trademark of Molecular Probes, Inc, a Thermo Fisher Scientific Company. The Alexa Fluor® dye included in this product is provided under an intellectual property license from Life Technologies Corporation. As this product contains the Alexa Fluor® dye, the purchase of this product conveys to the buyer the non-transferable right to use the purchased product and components of the product only in research conducted by the buyer (whether the buyer is an academic or for-profit entity). As this product contains the Alexa Fluor® dye the sale of this product is expressly conditioned on the buyer not using the product or its components, or any materials made using the product or its components, in any activity to generate revenue, which may include, but is not limited to use of the product or its components: in manufacturing; (ii) to provide a service, information, or data in return for payment (iii) for therapeutic, diagnostic or prophylactic purposes; or (iv) for resale, regardless of whether they are sold for use in research. For information on purchasing a license to use products containing Alexa Fluor® dyes for purposes other than research, contact Life Technologies Corporation, 5791 Van Allen Way, Carlsbad, CA 92008 USA or <a href="mailto:outlicensing@lifetech.com">outlicensing@lifetech.com</a>

## Properties

---

<b>Form</b>	Liquid
<b>Storage instructions</b>	Shipped at 4°C. Store at +4°C short term (1-2 weeks). Upon delivery aliquot. Store at -20°C. Stable for 12 months at -20°C. Store In the Dark.
<b>Storage buffer</b>	pH: 7.40 Preservative: 0.02% Sodium azide Constituents: 1% BSA, 30% Glycerol, PBS
<b>Purity</b>	Immunogen affinity purified
<b>Clonality</b>	Monoclonal
<b>Clone number</b>	28-8
<b>Isotype</b>	IgG

## Applications

---

Our [Abpromise guarantee](#) covers the use of **ab209960** in the following tested applications.

The application notes include recommended starting dilutions; optimal dilutions/concentrations should be determined by the end user.

Application	Abreviews	Notes
Flow Cyt		1/100.
ICC/IF		1/100. This product gave a positive signal in CHO-PDL1 cells fixed with 4% formaldehyde (10 min)

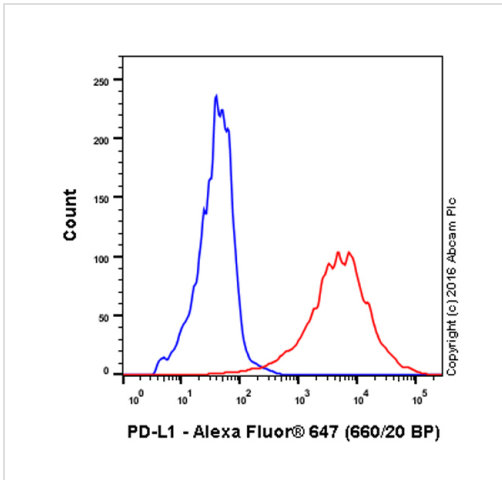
## Target

---

<b>Function</b>	Involved in the costimulatory signal, essential for T-cell proliferation and production of IL10 and IFNG, in an IL2-dependent and a PDCD1-independent manner. Interaction with PDCD1 inhibits T-cell proliferation and cytokine production.
<b>Tissue specificity</b>	Highly expressed in the heart, skeletal muscle, placenta and lung. Weakly expressed in the thymus, spleen, kidney and liver. Expressed on activated T- and B-cells, dendritic cells, keratinocytes and monocytes.
<b>Sequence similarities</b>	Belongs to the immunoglobulin superfamily. BTN/MOG family. Contains 1 Ig-like C2-type (immunoglobulin-like) domain. Contains 1 Ig-like V-type (immunoglobulin-like) domain.
<b>Cellular localization</b>	Cell membrane and Endomembrane system.

## Images

---

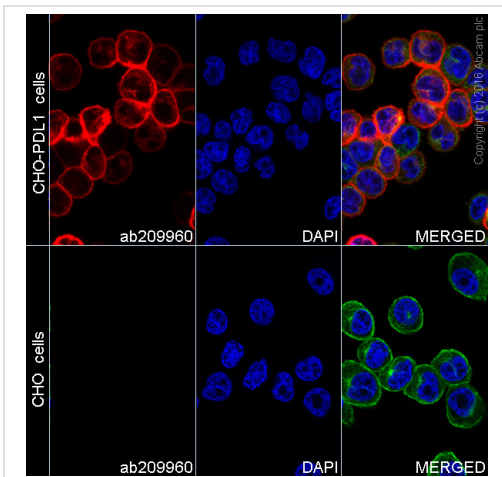


Flow Cytometry - Anti-PD-L1 antibody [28-8] (Alexa Fluor® 647) (ab209960)

Overlay histogram showing CHO (blue line) and CHO-PD-L1 transfected (red line) cells stained with ab209960.

The cells were incubated in 1x PBS / 10% normal goat serum to block non-specific protein-protein interactions followed by the antibody (ab209960, 1/100 dilution) for 30 min at 4°C.

Acquisition of >5,000 events were collected using a 17mW red Helium-Neon laser (633nm) and 660/20 bandpass filter.



Immunocytochemistry/ Immunofluorescence - Anti-PD-L1 antibody [28-8] (Alexa Fluor® 647) (ab209960)

Ab209960 staining PDL1 in CHO-PDL1 cells. The lower panels demonstrate that ab209960 does not cross react with un-transfected CHO cells.

The cells were fixed with 4% formaldehyde (10 min), permeabilized with 0.1% Triton X-100 for 5 minutes and then blocked with 1% BSA/10% normal goat serum/0.3M glycine in 0.1% PBS-Tween for 1h. The cells were then incubated overnight at +4°C with ab209960 at 1/200 dilution (shown in red) and [ab195887](#), Mouse monoclonal to alpha Tubulin (Alexa Fluor® 488), at 1/250 dilution (shown in green). Nuclear DNA was labelled with DAPI (shown in blue).

Image was taken with a confocal microscope (Leica-Microsystems, TCS SP8).

**Please note:** All products are "FOR RESEARCH USE ONLY AND ARE NOT INTENDED FOR DIAGNOSTIC OR THERAPEUTIC USE"

### Our Promise to you: Quality guaranteed and expert technical support

- Replacement or refund for products not performing as stated on the datasheet
- Valid for 12 months from date of delivery
- Response to your inquiry within 24 hours
- We provide support in Chinese, English, French, German, Japanese and Spanish

- Extensive multi-media technical resources to help you
- We investigate all quality concerns to ensure our products perform to the highest standards

If the product does not perform as described on this datasheet, we will offer a refund or replacement. For full details of the Abpromise, please visit <https://www.abcam.com/abpromise> or contact our technical team.

### **Terms and conditions**

---

- Guarantee only valid for products bought direct from Abcam or one of our authorized distributors