

Product datasheet

Anti-PDGF Receptor beta (phospho Y740) antibody [EP2135Y] ab81301

Recombinant RabMAB

[1 References](#) [1 Image](#)

Overview

Product name	Anti-PDGF Receptor beta (phospho Y740) antibody [EP2135Y]
Description	Rabbit monoclonal [EP2135Y] to PDGF Receptor beta (phospho Y740)
Host species	Rabbit
Specificity	This antibody detects PDGF Receptor beta phosphorylated at Tyrosine 740.
Tested applications	Suitable for: WB, ICC/IF Unsuitable for: IHC-P
Species reactivity	Reacts with: Mouse, Rat
Immunogen	A phospho specific peptide corresponding to residues surrounding Tyrosine 740 of Human PDGF Receptor beta.
Positive control	NIH 3T3 cell lysates.
General notes	Human: We have preliminary internal testing data to indicate this antibody may not react with these species. Please contact us for more information. Our RabMAB [®] technology is a patented hybridoma-based technology for making rabbit monoclonal antibodies. For details on our patents, please refer to RabMab[®] patents This product is a recombinant rabbit monoclonal antibody.

Properties

Form	Liquid
Storage instructions	Shipped at 4°C. Upon delivery aliquot and store at -20°C. Avoid freeze / thaw cycles.
Storage buffer	pH: 7.20 Preservative: 0.01% Sodium azide Constituents: 9% PBS, 40% Glycerol, 0.05% BSA, 50% Tissue culture supernatant
Purity	Tissue culture supernatant
Clonality	Monoclonal
Clone number	EP2135Y
Isotype	IgG

Applications

Our [Abpromise guarantee](#) covers the use of **ab81301** in the following tested applications.

The application notes include recommended starting dilutions; optimal dilutions/concentrations should be determined by the end user.

Application	Abreviews	Notes
WB		1/1000 - 1/2000. Detects a band of approximately 190 kDa (predicted molecular weight: 124 kDa).
ICC/IF		1/100 - 1/250.
Application notes		Is unsuitable for IHC-P.

Target

Function Receptor that binds specifically to PDGFB and PDGFD and has a tyrosine-protein kinase activity. Phosphorylates Tyr residues at the C-terminus of PTPN11 creating a binding site for the SH2 domain of GRB2.

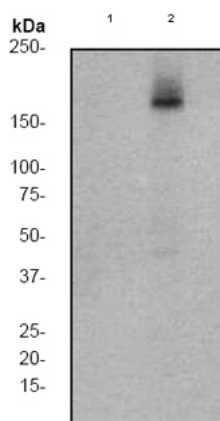
Involvement in disease Note=A chromosomal aberration involving PDGFRB is found in a form of chronic myelomonocytic leukemia (CMML). Translocation t(5;12)(q33;p13) with EVT6/TEL. It is characterized by abnormal clonal myeloid proliferation and by progression to acute myelogenous leukemia (AML).
Note=A chromosomal aberration involving PDGFRB may be a cause of acute myelogenous leukemia. Translocation t(5;14)(q33;q32) with TRIP11. The fusion protein may be involved in clonal evolution of leukemia and eosinophilia.
Note=A chromosomal aberration involving PDGFRB may be a cause of juvenile myelomonocytic leukemia. Translocation t(5;17)(q33;p11.2) with SPECC1.
Defects in PDGFRB are a cause of myeloproliferative disorder chronic with eosinophilia (MPE) [MIM:131440]. A hematologic disorder characterized by malignant eosinophils proliferation.
Note=A chromosomal aberration involving PDGFRB is found in many instances of myeloproliferative disorder chronic with eosinophilia. Translocation t(5;12) with ETV6 on chromosome 12 creating an PDGFRB-ETV6 fusion protein.
Note=A chromosomal aberration involving PDGFRB may be the cause of a myeloproliferative disorder (MBD) associated with eosinophilia. Translocation t(1;5)(q23;q33) that forms a PDE4DIP-PDGFRB fusion protein.

Sequence similarities Belongs to the protein kinase superfamily. Tyr protein kinase family. CSF-1/PDGF receptor subfamily.
Contains 5 Ig-like C2-type (immunoglobulin-like) domains.
Contains 1 protein kinase domain.

Post-translational modifications Autophosphorylated. Dephosphorylated by PTPRJ at Tyr-751, Tyr-857, Tyr-1009 and Tyr-1021.

Cellular localization Membrane.

Images



Western blot - Anti-PDGF Receptor beta (phospho Y740) antibody [EP2135Y] (ab81301)

All lanes : Anti-PDGF Receptor beta (phospho Y740) antibody [EP2135Y] (ab81301) at 1/2000 dilution

Lane 1 : NIH 3T3 un-treated

Lane 2 : NIH 3T3 treated with PDGF

Lysates/proteins at 10 µg per lane.

Secondary

All lanes : HRP labelled goat anti-rabbit at 1/2000 dilution

Predicted band size: 124 kDa

Observed band size: 190 kDa

Please note: All products are "FOR RESEARCH USE ONLY AND ARE NOT INTENDED FOR DIAGNOSTIC OR THERAPEUTIC USE"

Our Abpromise to you: Quality guaranteed and expert technical support

- Replacement or refund for products not performing as stated on the datasheet
- Valid for 12 months from date of delivery
- Response to your inquiry within 24 hours
- We provide support in Chinese, English, French, German, Japanese and Spanish
- Extensive multi-media technical resources to help you
- We investigate all quality concerns to ensure our products perform to the highest standards

If the product does not perform as described on this datasheet, we will offer a refund or replacement. For full details of the Abpromise, please visit <https://www.abcam.com/abpromise> or contact our technical team.

Terms and conditions

- Guarantee only valid for products bought direct from Abcam or one of our authorized distributors