

Product datasheet

Anti-POLR1B antibody ab113023

1 Image

Overview

Product name	Anti-POLR1B antibody
Description	Rabbit polyclonal to POLR1B
Host species	Rabbit
Tested applications	Suitable for: WB
Species reactivity	Reacts with: Human
Immunogen	Synthetic peptide corresponding to Human POLR1B aa 88-117 (N terminal) conjugated to Keyhole Limpet Haemocyanin (KLH). Database link: Q9H9Y6
Positive control	HeLa cell line lysates

Properties

Form	Liquid
Storage instructions	Shipped at 4°C. Store at 4°C (up to 6 months). Store at -20°C long term.
Storage buffer	Preservative: 0.09% Sodium azide Constituent: 99.91% PBS
Purity	Immunogen affinity purified
Purification notes	ab113023 is purified through a protein A column, followed by peptide affinity purification.
Clonality	Polyclonal
Isotype	IgG

Applications

Our [Abpromise guarantee](#) covers the use of **ab113023** in the following tested applications.

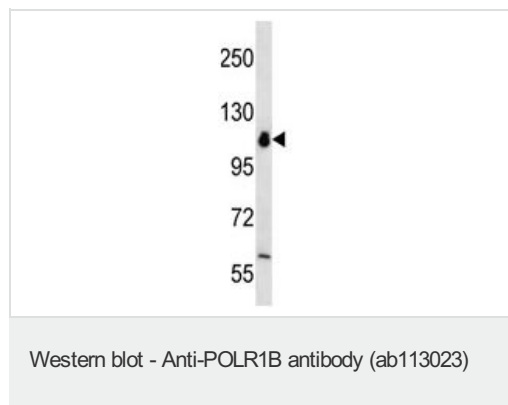
The application notes include recommended starting dilutions; optimal dilutions/concentrations should be determined by the end user.

Application	Abreviews	Notes
WB		1/100 - 1/500. Predicted molecular weight: 128 kDa.

Target

Function	DNA-dependent RNA polymerase catalyzes the transcription of DNA into RNA using the four ribonucleoside triphosphates as substrates. Second largest core component of RNA polymerase I which synthesizes ribosomal RNA precursors. Proposed to contribute to the polymerase catalytic activity and forms the polymerase active center together with the largest subunit. Pol I is composed of mobile elements and RPA2 is part of the core element with the central large cleft and probably a clamp element that moves to open and close the cleft.
Sequence similarities	Belongs to the RNA polymerase beta chain family.
Cellular localization	Nucleus, nucleolus.

Images



Anti-POLR1B antibody (ab113023) at 1/100 dilution + HeLa cell line lysates at 35 μ g

Predicted band size: 128 kDa

Please note: All products are "FOR RESEARCH USE ONLY AND ARE NOT INTENDED FOR DIAGNOSTIC OR THERAPEUTIC USE"

Our Abpromise to you: Quality guaranteed and expert technical support

- Replacement or refund for products not performing as stated on the datasheet
- Valid for 12 months from date of delivery
- Response to your inquiry within 24 hours
- We provide support in Chinese, English, French, German, Japanese and Spanish
- Extensive multi-media technical resources to help you
- We investigate all quality concerns to ensure our products perform to the highest standards

If the product does not perform as described on this datasheet, we will offer a refund or replacement. For full details of the Abpromise, please visit <https://www.abcam.com/abpromise> or contact our technical team.

Terms and conditions

- Guarantee only valid for products bought direct from Abcam or one of our authorized distributors