

Product datasheet

Anti-PROSAPIP1 antibody ab122148

1 Image

Overview

<b>Product name</b>	Anti-PROSAPIP1 antibody
<b>Description</b>	Rabbit polyclonal to PROSAPIP1
<b>Host species</b>	Rabbit
<b>Tested applications</b>	<b>Suitable for:</b> IHC-P
<b>Species reactivity</b>	<b>Reacts with:</b> Human
<b>Immunogen</b>	antigen, corresponding to N terminal amino acids 48-139 (QEFAMKSVGT RTGGGGSQGS FPGPRGSGSG ASRERPGRYP SEDKGLANSL YLNGELRGSD HTDVCGNVVG SSGGSSSSGG SDKAPPQYRE PS) of Human PROSAPIP1. <a href="#">Run BLAST with ExPASy</a> <a href="#">Run BLAST with NCBI</a>
<b>Positive control</b>	RT-4 and U-251 MG cell lysate; Human Plasma; Human Liver tissue.

Properties

<b>Form</b>	Liquid
<b>Storage instructions</b>	Shipped at 4°C. Upon delivery aliquot and store at -20°C. Avoid freeze / thaw cycles.
<b>Storage buffer</b>	pH: 7.20 Preservative: 0.02% Sodium azide Constituents: 59% PBS, 40% Glycerol
<b>Purity</b>	Immunogen affinity purified
<b>Clonality</b>	Polyclonal
<b>Isotype</b>	IgG

Applications

Our [Abpromise guarantee](#) covers the use of **ab122148** in the following tested applications.

The application notes include recommended starting dilutions; optimal dilutions/concentrations should be determined by the end user.

Application	Abreviews	Notes
IHC-P		1/50 - 1/200. Perform heat mediated antigen retrieval with citrate buffer pH 6 before commencing with IHC staining protocol.

## Target

---

### Sequence similarities

Belongs to the PROSAPIP1 family.

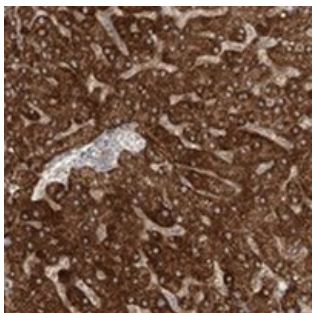
### Cellular localization

Cell junction > synapse > postsynaptic cell membrane > postsynaptic density. Cytoplasm > cytoskeleton. Detected at synapses, postsynaptic density, synaptic spines and dendrites.

---

## Images

---



ab122148, at 1/100, staining PROSAPIP1 in paraffin embedded Human liver tissue by Immunohistochemistry.

Immunohistochemistry (Formalin/PFA-fixed paraffin-embedded sections) - Anti-PROSAPIP1 antibody (ab122148)

**Please note:** All products are "FOR RESEARCH USE ONLY AND ARE NOT INTENDED FOR DIAGNOSTIC OR THERAPEUTIC USE"

## Our Abpromise to you: Quality guaranteed and expert technical support

---

- Replacement or refund for products not performing as stated on the datasheet
- Valid for 12 months from date of delivery
- Response to your inquiry within 24 hours
  
- We provide support in Chinese, English, French, German, Japanese and Spanish
- Extensive multi-media technical resources to help you
- We investigate all quality concerns to ensure our products perform to the highest standards

If the product does not perform as described on this datasheet, we will offer a refund or replacement. For full details of the Abpromise, please visit <https://www.abcam.com/abpromise> or contact our technical team.

## Terms and conditions

---

- Guarantee only valid for products bought direct from Abcam or one of our authorized distributors