


Product datasheet

Anti-PRSS21 / ESP1 antibody ab118940

1 Image

Overview

Product name	Anti-PRSS21 / ESP1 antibody
Description	Rabbit polyclonal to PRSS21 / ESP1
Host species	Rabbit
Tested applications	Suitable for: WB
Species reactivity	Reacts with: Human Predicted to work with: Mouse, Rat, Rabbit 
Immunogen	Synthetic peptide corresponding to Human PRSS21/ ESP1 aa 35-84 (N terminal). (NP_659206, Q9Y6M0) Sequence: RRVITSRIVGGEDAELGRWPWQGSLRLWDSHVCVGS LLSHRWALTAAHCF Run BLAST with Run BLAST with
Positive control	Human fetal brain lysate.
General notes	Previously labelled as PRSS21.

Properties

Form	Liquid
Storage instructions	Shipped at 4°C. Upon delivery aliquot and store at -20°C. Avoid repeated freeze / thaw cycles.
Storage buffer	Preservative: 0.09% Sodium azide Constituents: 2% Sucrose, PBS
Purity	Immunogen affinity purified
Clonality	Polyclonal
Isotype	IgG

Applications

Our [Abpromise guarantee](#) covers the use of **ab118940** in the following tested applications.

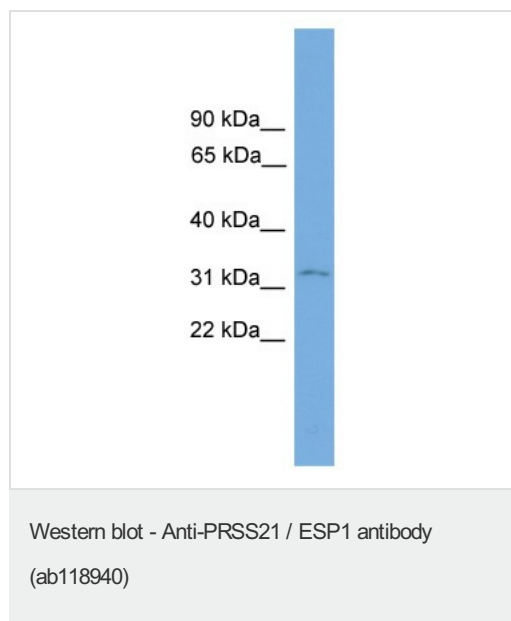
The application notes include recommended starting dilutions; optimal dilutions/concentrations should be determined by the end user.

Application	Abreviews	Notes
WB		Use a concentration of 0.2 - 1 µg/ml. Predicted molecular weight: 34 kDa. Good results were obtained when blocked with 5% non-fat dry milk in 0.05% PBS-T.

Target

Function	Could regulate proteolytic events associated with testicular germ cell maturation.
Tissue specificity	Expressed predominantly in premeiotic testicular germ cells, mostly late pachytene and diplotene spermatocytes.
Sequence similarities	Belongs to the peptidase S1 family. Contains 1 peptidase S1 domain.
Cellular localization	Cell membrane.

Images



Anti-PRSS21 / ESP1 antibody (ab118940) at 1 µg/ml + Human fetal brain lysate at 10 µg

Predicted band size: 34 kDa

Please note: All products are "FOR RESEARCH USE ONLY AND ARE NOT INTENDED FOR DIAGNOSTIC OR THERAPEUTIC USE"

Our Abpromise to you: Quality guaranteed and expert technical support

- Replacement or refund for products not performing as stated on the datasheet
- Valid for 12 months from date of delivery
- Response to your inquiry within 24 hours
- We provide support in Chinese, English, French, German, Japanese and Spanish
- Extensive multi-media technical resources to help you
- We investigate all quality concerns to ensure our products perform to the highest standards

If the product does not perform as described on this datasheet, we will offer a refund or replacement. For full details of the Abpromise,

please visit <https://www.abcam.com/abpromise> or contact our technical team.

Terms and conditions

- Guarantee only valid for products bought direct from Abcam or one of our authorized distributors