

Product datasheet

Anti-PTPMT1 antibody ab61037

1 Image

Overview

Product name	Anti-PTPMT1 antibody
Description	Rabbit polyclonal to PTPMT1
Host species	Rabbit
Tested applications	Suitable for: IHC-P
Species reactivity	Reacts with: Human
Immunogen	Synthetic peptide conjugated to KLH

Properties

Form	Liquid
Storage instructions	Shipped at 4°C. Upon delivery aliquot. Avoid freeze / thaw cycle.
Storage buffer	Preservative: 0.1% Sodium Azide Constituents: PBS, pH 7.7
Purity	Immunogen affinity purified
Clonality	Polyclonal
Isotype	IgG

Applications

Our [Abpromise guarantee](#) covers the use of **ab61037** in the following tested applications.

The application notes include recommended starting dilutions; optimal dilutions/concentrations should be determined by the end user.

Application	Abreviews	Notes
IHC-P		Use a concentration of 14 µg/ml.

Target

Function	Protein phosphatase that specifically mediates dephosphorylation of mitochondrial proteins, thereby playing an essential role in ATP production. Has probably a preference for proteins
-----------------	---

phosphorylated on Ser and/or Thr residues compared to proteins phosphorylated on Tyr residues. Probably involved in regulation of insulin secretion in pancreatic beta cells.

Sequence similarities

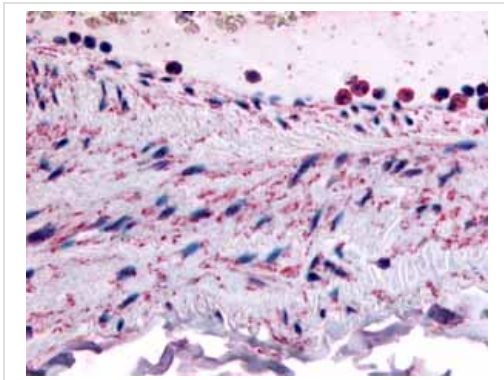
Belongs to the protein-tyrosine phosphatase family. Non-receptor class dual specificity subfamily.

Contains 1 tyrosine-protein phosphatase domain.

Cellular localization

Mitochondrion inner membrane. Associated with the inner membrane.

Images



ab61037 at 14µg/ml staining Vascular Smooth Muscle by IHC-P

Immunohistochemistry (Formalin/PFA-fixed paraffin-embedded sections) - Anti-PTPMT1 antibody (ab61037)

Please note: All products are "FOR RESEARCH USE ONLY AND ARE NOT INTENDED FOR DIAGNOSTIC OR THERAPEUTIC USE"

Our Abpromise to you: Quality guaranteed and expert technical support

- Replacement or refund for products not performing as stated on the datasheet
- Valid for 12 months from date of delivery
- Response to your inquiry within 24 hours
- We provide support in Chinese, English, French, German, Japanese and Spanish
- Extensive multi-media technical resources to help you
- We investigate all quality concerns to ensure our products perform to the highest standards

If the product does not perform as described on this datasheet, we will offer a refund or replacement. For full details of the Abpromise, please visit <https://www.abcam.com/abpromise> or contact our technical team.

Terms and conditions

- Guarantee only valid for products bought direct from Abcam or one of our authorized distributors