

Product datasheet

Anti-Pan3 antibody ab88642

★ ★ ★ ★ ★ 3 Abreviews
 [1 References](#)
 [1 Image](#)

Overview

Product name	Anti-Pan3 antibody
Description	Rabbit polyclonal to Pan3
Host species	Rabbit
Tested applications	Suitable for: WB
Species reactivity	Reacts with: Human Predicted to work with: Mouse, Rat
Immunogen	Synthetic peptide conjugated to KLH derived from within residues 400 - 500 of Human Pan3. Read Abcam's proprietary immunogen policy
Positive control	This antibody gave a positive signal in the following lysates: HeLa Whole Cell; HepG2 Whole Cell; MOLT4 Whole Cell; Jurkat Whole Cell; Human Liver Tissue.

Properties

Form	Liquid
Storage instructions	Shipped at 4°C. Store at +4°C short term (1-2 weeks). Upon delivery aliquot. Store at -20°C or -80°C. Avoid freeze / thaw cycle.
Storage buffer	Preservative: 0.02% Sodium Azide Constituents: 1% BSA, PBS, pH 7.4
Purity	Immunogen affinity purified
Clonality	Polyclonal
Isotype	IgG

Applications

Our [Abpromise guarantee](#) covers the use of **ab88642** in the following tested applications.

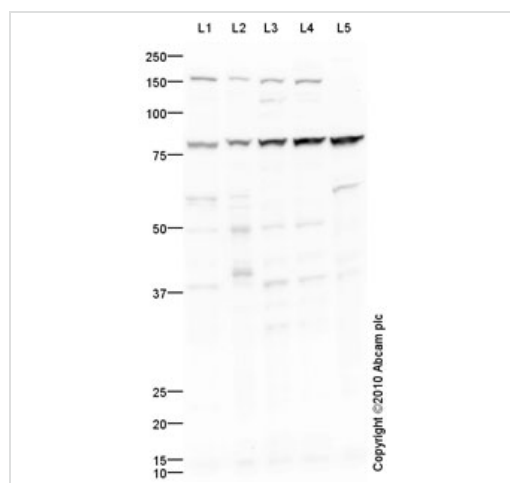
The application notes include recommended starting dilutions; optimal dilutions/concentrations should be determined by the end user.

Application	Abreviews	Notes
WB	★ ★ ★ ★ ★	Use a concentration of 1 µg/ml. Detects a band of approximately 80 kDa (predicted molecular weight: 82 kDa).

Target

Function	Functions in cytoplasmic mRNA decay. As part of the Pan nuclease complex, recruits polyadenylate-binding protein which in turn stimulates PAN2 nuclease activity.
Sequence similarities	Belongs to the protein kinase superfamily. Contains 1 protein kinase domain.
Domain	The protein kinase domain is predicted to be catalytically inactive.
Cellular localization	Cytoplasm.

Images



Western blot - Anti-Pan3 antibody (ab88642)

All lanes : Anti-Pan3 antibody (ab88642) at 1 µg/ml

Lane 1 : HeLa (Human epithelial carcinoma cell line) Whole Cell Lysate

Lane 2 : HepG2 (Human hepatocellular liver carcinoma cell line) Whole Cell Lysate

Lane 3 : MOLT4 (Human acute lymphoblastic leukemia cell line) Whole Cell Lysate

Lane 4 : Jurkat (Human T cell lymphoblast-like cell line) Whole Cell Lysate

Lane 5 : Human liver tissue lysate - total protein ([ab29889](#))

Lysates/proteins at 10 µg per lane.

Secondary

All lanes : Goat Anti-Rabbit IgG H&L (HRP) preadsorbed ([ab97080](#)) at 1/5000 dilution

Developed using the ECL technique.

Performed under reducing conditions.

Predicted band size: 82 kDa

Observed band size: 80 kDa

[why is the actual band size different from the predicted?](#)

Additional bands at: 160 kDa, 60 kDa. We are unsure as to the identity of these extra bands.

Exposure time: 1 minute

Our Abpromise to you: Quality guaranteed and expert technical support

- Replacement or refund for products not performing as stated on the datasheet
- Valid for 12 months from date of delivery
- Response to your inquiry within 24 hours

- We provide support in Chinese, English, French, German, Japanese and Spanish
- Extensive multi-media technical resources to help you
- We investigate all quality concerns to ensure our products perform to the highest standards

If the product does not perform as described on this datasheet, we will offer a refund or replacement. For full details of the Abpromise, please visit <https://www.abcam.com/abpromise> or contact our technical team.

Terms and conditions

- Guarantee only valid for products bought direct from Abcam or one of our authorized distributors