

Product datasheet

Anti-Progestin Receptor Beta antibody ab46535

[1 References](#) [2 Images](#)

Overview

Product name	Anti-Progestin Receptor Beta antibody
Description	Rabbit polyclonal to Progestin Receptor Beta
Host species	Rabbit
Tested applications	Suitable for: ICC/IF, WB
Species reactivity	Reacts with: Mouse, Rat, Human, Pig
Immunogen	A protein specific peptide conjugated to KLH recognizing extracellular epitopes.

Properties

Form	Liquid
Storage instructions	Shipped at 4°C. Upon delivery aliquot and store at -20°C. Avoid freeze / thaw cycles.
Storage buffer	Preservative: 0.05% Sodium Azide Constituents: Whole serum
Purity	Whole antiserum
Clonality	Polyclonal
Isotype	IgG

Applications

Our [Abpromise guarantee](#) covers the use of **ab46535** in the following tested applications.

The application notes include recommended starting dilutions; optimal dilutions/concentrations should be determined by the end user.

Application	Abreviews	Notes
ICC/IF		Use at an assay dependent dilution.
WB		Use at an assay dependent dilution. Detects a band of approximately 40 kDa.

Target

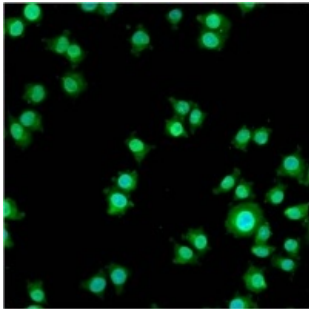
Relevance

MPRb (Membrane progesterin receptor beta) is a steroid membrane receptor and binds progesterone. MPRb may be involved in oocyte maturation. MPRb is an integral membrane protein and is expressed in brain and testis. It belongs to the ADIPOR family.

Cellular localization

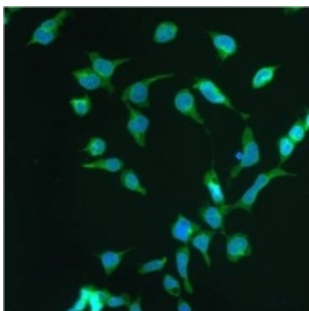
Cell Membrane. Multi-pass membrane protein. Note: Colocalizes with a lysosomal protein cathepsin D.

Images



Immunofluorescent analysis of Progesterin Receptor Beta using anti-Progesterin Receptor Beta polyclonal antibody (ab46535) shows staining in NS-1 Cells.

Immunocytochemistry/ Immunofluorescence - Anti-
Progesterin Receptor Beta antibody (ab46535)



Immunofluorescent analysis of Progesterin Receptor Beta using anti-Progesterin Receptor Beta polyclonal antibody (ab46535) shows staining in p19 Cells.

Immunocytochemistry/ Immunofluorescence - Anti-
Progesterin Receptor Beta antibody (ab46535)

Please note: All products are "FOR RESEARCH USE ONLY AND ARE NOT INTENDED FOR DIAGNOSTIC OR THERAPEUTIC USE"

Our Abpromise to you: Quality guaranteed and expert technical support

- Replacement or refund for products not performing as stated on the datasheet
- Valid for 12 months from date of delivery
- Response to your inquiry within 24 hours
- We provide support in Chinese, English, French, German, Japanese and Spanish
- Extensive multi-media technical resources to help you
- We investigate all quality concerns to ensure our products perform to the highest standards

If the product does not perform as described on this datasheet, we will offer a refund or replacement. For full details of the Abpromise, please visit <https://www.abcam.com/abpromise> or contact our technical team.

Terms and conditions

- Guarantee only valid for products bought direct from Abcam or one of our authorized distributors