

## Product datasheet

# Anti-Proinsulin antibody [3A1] ab8301

★★★★☆ 2 Abreviews 4 References 1 Image

### Overview

---

<b>Product name</b>	Anti-Proinsulin antibody [3A1]
<b>Description</b>	Mouse monoclonal [3A1] to Proinsulin
<b>Host species</b>	Mouse
<b>Specificity</b>	Kd for this antibody is $>1.1 \times 10^{-8}M$ This antibody is specific for proinsulin. It does not recognise insulin or C-peptide.
<b>Tested applications</b>	<b>Suitable for:</b> ICC/IF, ELISA, IHC-Fr, RIA
<b>Species reactivity</b>	<b>Reacts with:</b> Human <b>Does not react with:</b> Cow, Pig
<b>Immunogen</b>	Full length native protein (purified) (Human).
<b>Epitope</b>	This antibody reacts with the site of connection of C-peptide and C-end of B-chain of proinsulin molecule.
<b>General notes</b>	Abcam is committed to meeting high standards of ethical manufacturing and has decided to discontinue this product by June 2019 as it has been generated by the ascites method. We are sorry for any inconvenience this may cause.

### Properties

---

<b>Form</b>	Liquid
<b>Storage instructions</b>	Shipped at 4°C. Upon delivery aliquot and store at -20°C. Avoid freeze / thaw cycles.
<b>Storage buffer</b>	PBS with 0.1% sodium azide, pH 7.4
<b>Purity</b>	Protein A purified
<b>Clonality</b>	Monoclonal
<b>Clone number</b>	3A1
<b>Myeloma</b>	x63-Ag8.653
<b>Isotype</b>	IgG1
<b>Light chain type</b>	kappa

### Applications

---

Our [Abpromise guarantee](#) covers the use of **ab8301** in the following tested applications.

The application notes include recommended starting dilutions; optimal dilutions/concentrations should be determined by the end user.

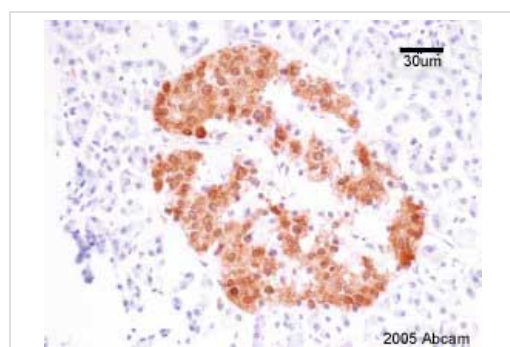
Application	Abreviews	Notes
ICC/IF		Use at an assay dependent concentration.
ELISA		Use at an assay dependent concentration.
IHC-Fr	★★★★☆	Use at an assay dependent concentration.
RIA		Use at an assay dependent concentration.

## Target

**Relevance** A precursor of insulin it is converted to insulin by removal of the connecting C peptide, leaving the two (A and B) chains. From every molecule of proinsulin, one molecule of insulin plus one molecule of C Peptide are produced.

**Cellular localization** Secreted

## Images



ab8301 at a 1/500 dilution staining human pancreas tissue sections by immunohistochemistry (frozen). The antibody was incubated with the tissue for 1 hour and then detected using an HRP conjugated system.

This image is courtesy of an Abreview submitted by an anonymous researcher on **12 December 2005**.

Immunohistochemistry (Frozen sections) - Anti-Proinsulin antibody [3A1] (ab8301)

**Please note:** All products are "FOR RESEARCH USE ONLY AND ARE NOT INTENDED FOR DIAGNOSTIC OR THERAPEUTIC USE"

## Our Abpromise to you: Quality guaranteed and expert technical support

- Replacement or refund for products not performing as stated on the datasheet
- Valid for 12 months from date of delivery
- Response to your inquiry within 24 hours
- We provide support in Chinese, English, French, German, Japanese and Spanish
- Extensive multi-media technical resources to help you
- We investigate all quality concerns to ensure our products perform to the highest standards

If the product does not perform as described on this datasheet, we will offer a refund or replacement. For full details of the Abpromise, please visit <https://www.abcam.com/abpromise> or contact our technical team.

## Terms and conditions

---

- Guarantee only valid for products bought direct from Abcam or one of our authorized distributors