


Product datasheet

Anti-Prostaglandin E Receptor EP2 antibody ab73191

1 Image

Overview

Product name	Anti-Prostaglandin E Receptor EP2 antibody
Description	Rabbit polyclonal to Prostaglandin E Receptor EP2
Host species	Rabbit
Tested applications	Suitable for: WB
Species reactivity	Reacts with: Human Predicted to work with: Rat, Sheep, Horse, Cow 
Immunogen	Synthetic peptide conjugated to KLH derived from within residues 100 - 200 of Human Prostaglandin E Receptor EP2. Read Abcam's proprietary immunogen policy (Peptide available as ab87411 .)
Positive control	This antibody gave a positive signal in Human Placenta Tissue Lysate and JEG-3 Whole Cell Lysate.

Properties

Form	Liquid
Storage instructions	Shipped at 4°C. Store at +4°C short term (1-2 weeks). Upon delivery aliquot. Store at -20°C or -80°C. Avoid freeze / thaw cycle.
Storage buffer	Preservative: 0.02% Sodium Azide Constituents: 1% BSA, PBS, pH 7.4
Purity	Immunogen affinity purified
Clonality	Polyclonal
Isotype	IgG

Applications

Our [Abpromise guarantee](#) covers the use of **ab73191** in the following tested applications.

The application notes include recommended starting dilutions; optimal dilutions/concentrations should be determined by the end user.

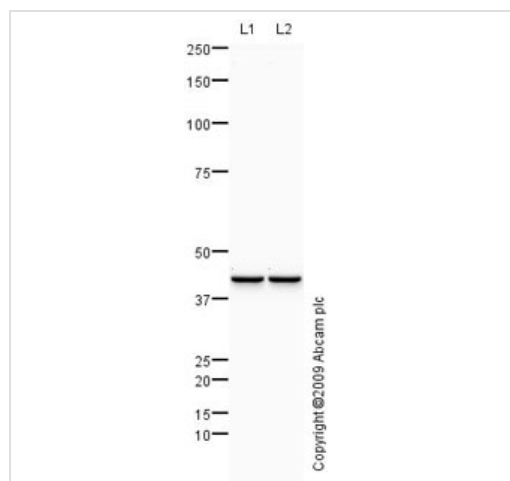
Application	Abreviews	Notes
-------------	-----------	-------

Application	Abreviews	Notes
WB		Use a concentration of 1 µg/ml. Detects a band of approximately 42 kDa (predicted molecular weight: 40 kDa).

Target

Function	Receptor for prostaglandin E2 (PGE2). The activity of this receptor is mediated by G(s) proteins that stimulate adenylate cyclase. The subsequent raise in intracellular cAMP is responsible for the relaxing effect of this receptor on smooth muscle.
Tissue specificity	Placenta and lung.
Sequence similarities	Belongs to the G-protein coupled receptor 1 family.
Cellular localization	Cell membrane.

Images



Western blot - Anti-Prostaglandin E Receptor EP2 antibody (ab73191)

All lanes : Anti-Prostaglandin E Receptor EP2 antibody (ab73191) at 1 µg/ml

Lane 1 : Human placenta tissue lysate - total protein ([ab29745](#))

Lane 2 : JEG-3 (Human placental choriocarcinoma cell line) Whole Cell Lysate

Secondary

All lanes : Goat polyclonal to Rabbit IgG - H&L - Pre-Adsorbed (HRP) ([ab65484](#)) at 1/3000 dilution

Developed using the ECL technique.

Performed under reducing conditions.

Predicted band size: 40 kDa

Observed band size: 42 kDa

[why is the actual band size different from the predicted?](#)

Prostaglandin E Receptor EP2 contains a number of potential glycosylation sites (SwissProt) which may explain its migration at a higher molecular weight than predicted.

Please note: All products are "FOR RESEARCH USE ONLY AND ARE NOT INTENDED FOR DIAGNOSTIC OR THERAPEUTIC USE"

Our Abpromise to you: Quality guaranteed and expert technical support

- Replacement or refund for products not performing as stated on the datasheet
- Valid for 12 months from date of delivery
- Response to your inquiry within 24 hours

- We provide support in Chinese, English, French, German, Japanese and Spanish
- Extensive multi-media technical resources to help you
- We investigate all quality concerns to ensure our products perform to the highest standards

If the product does not perform as described on this datasheet, we will offer a refund or replacement. For full details of the Abpromise, please visit <https://www.abcam.com/abpromise> or contact our technical team.

Terms and conditions

- Guarantee only valid for products bought direct from Abcam or one of our authorized distributors