

Product datasheet

Anti-R3HCC1 antibody ab121740

[2 Images](#)

Overview

Product name	Anti-R3HCC1 antibody
Description	Rabbit polyclonal to R3HCC1
Host species	Rabbit
Tested applications	Suitable for: ICC/IF, IHC-P
Species reactivity	Reacts with: Human
Immunogen	antigen sequence: ENDFVHRIQE ELDRFLLQKQ LSKVLLFPPL SSRLRYLIHR TAENFDLLSS FSVGEGWKRR TVICHQDIRV PSSDGLSGPC RAPASCPSRY HGPRPISNQG, corresponding to amino acids 55-154 of Human R3HCC1. Run BLAST with ExPASy Run BLAST with NCBI
Positive control	Human esophagus tissue.

Properties

Form	Liquid
Storage instructions	Shipped at 4°C. Upon delivery aliquot and store at -20°C. Avoid freeze / thaw cycles.
Storage buffer	pH: 7.20 Preservative: 0.02% Sodium azide Constituents: 59% PBS, 40% Glycerol
Purity	Immunogen affinity purified
Clonality	Polyclonal
Isotype	IgG

Applications

Our [Abpromise guarantee](#) covers the use of **ab121740** in the following tested applications.

The application notes include recommended starting dilutions; optimal dilutions/concentrations should be determined by the end user.

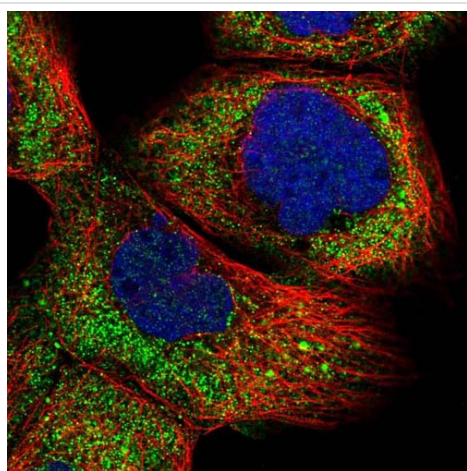
Application	Abreviews	Notes
ICC/IF		Use a concentration of 1 - 4 µg/ml. Recommend PFA Fixation and Triton X-100 treatment

Application	Abreviews	Notes
IHC-P		1/50 - 1/200. Perform heat mediated antigen retrieval with citrate buffer pH 6 before commencing with IHC staining protocol.

Target

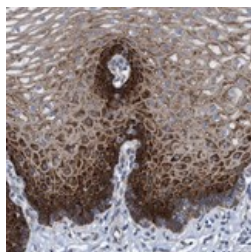
Sequence similarities Contains 1 R3H domain.

Images



Immunofluorescent staining of Human cell line A-431 shows positivity in cytoplasm. Recommended concentration of ab121740 1-4 µg/ml. Cells treated with PFA/Triton X-100.

Immunocytochemistry/ Immunofluorescence - Anti-R3HCC1 antibody (ab121740)



ab121740 at 1/150 dilution staining R3HCC1 in Paraffin-embedded Human esophagus tissue by Immunohistochemistry. Note: strong cytoplasmic positivity in squamous epithelial cells.

Immunohistochemistry (Formalin/PFA-fixed paraffin-embedded sections) - Anti-R3HCC1 antibody (ab121740)

Please note: All products are "FOR RESEARCH USE ONLY AND ARE NOT INTENDED FOR DIAGNOSTIC OR THERAPEUTIC USE"

Our Abpromise to you: Quality guaranteed and expert technical support

- Replacement or refund for products not performing as stated on the datasheet
- Valid for 12 months from date of delivery

- Response to your inquiry within 24 hours
- We provide support in Chinese, English, French, German, Japanese and Spanish
- Extensive multi-media technical resources to help you
- We investigate all quality concerns to ensure our products perform to the highest standards

If the product does not perform as described on this datasheet, we will offer a refund or replacement. For full details of the Abpromise, please visit <https://www.abcam.com/abpromise> or contact our technical team.

Terms and conditions

- Guarantee only valid for products bought direct from Abcam or one of our authorized distributors