


Product datasheet

Anti-RBM34 antibody ab86787

3 Images

Overview

Product name	Anti-RBM34 antibody
Description	Rabbit polyclonal to RBM34
Host species	Rabbit
Tested applications	Suitable for: WB, IP, IHC-P
Species reactivity	Reacts with: Human Predicted to work with: Gorilla 
Immunogen	Synthetic peptide corresponding to a region between residues 370 and 430 of human RBM34 (CAI21936.1).
Positive control	HeLa whole cell lysate

Properties

Form	Liquid
Storage instructions	Shipped at 4°C. Upon delivery aliquot and store at -20°C. Avoid freeze / thaw cycles.
Storage buffer	Preservative: 0.09% Sodium Azide Constituents: Tris citrate/phosphate buffer, pH 7-8
Purity	Immunogen affinity purified
Purification notes	ab86787 was affinity purified using an epitope specific to RBM34 immobilized on solid support.
Clonality	Polyclonal
Isotype	IgG

Applications

Our [Abpromise guarantee](#) covers the use of **ab86787** in the following tested applications.

The application notes include recommended starting dilutions; optimal dilutions/concentrations should be determined by the end user.

Application	Abreviews	Notes
WB		1/2000 - 1/10000. Predicted molecular weight: 49 kDa.

Application	Abreviews	Notes
IP		Use at 10 µg/mg of lysate.
IHC-P		1/500 - 1/2000. Perform heat mediated antigen retrieval with citrate buffer pH 6 before commencing with IHC staining protocol.

Target

Sequence similarities

Belongs to the RRM RBM34 family.
Contains 2 RRM (RNA recognition motif) domains.

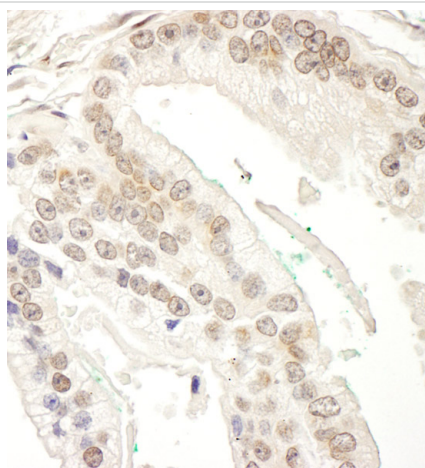
Post-translational modifications

Phosphorylated upon DNA damage, probably by ATM or ATR.

Cellular localization

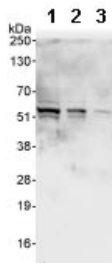
Nucleus > nucleolus.

Images



Immunohistochemistry (Formalin/PFA-fixed paraffin-embedded sections) analysis of human prostate carcinoma tissue labelling RBM34 with ab86787 at 1/1000 (1µg/ml).
Detection: DAB.

Immunohistochemistry (Formalin/PFA-fixed paraffin-embedded sections) - Anti-RBM34 antibody (ab86787)



Western blot - Anti-RBM34 antibody (ab86787)

All lanes : Anti-RBM34 antibody (ab86787) at 0.1 µg/ml

Lane 1 : HeLa whole cell lysate at 50 µg

Lane 2 : HeLa whole cell lysate at 15 µg

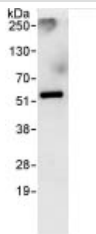
Lane 3 : HeLa whole cell lysate at 5 µg

Developed using the ECL technique.

Predicted band size: 49 kDa

Observed band size: 49 kDa

Exposure time: 10 seconds



Immunoprecipitation - Anti-RBM34 antibody (ab86787)

Detection of RBM34 by Western Blot of Immunoprecipitate.

ab86787 at 0.4 µg/ml staining RBM34 in HeLa whole cell lysate immunoprecipitated using ab86787 at 10 µg/mg lysate (1 mg/IP; 20% of IP loaded/lane).

Detection: Chemiluminescence with exposure time of 30 seconds.

Please note: All products are "FOR RESEARCH USE ONLY AND ARE NOT INTENDED FOR DIAGNOSTIC OR THERAPEUTIC USE"

Our Abpromise to you: Quality guaranteed and expert technical support

- Replacement or refund for products not performing as stated on the datasheet
- Valid for 12 months from date of delivery
- Response to your inquiry within 24 hours
- We provide support in Chinese, English, French, German, Japanese and Spanish
- Extensive multi-media technical resources to help you
- We investigate all quality concerns to ensure our products perform to the highest standards

If the product does not perform as described on this datasheet, we will offer a refund or replacement. For full details of the Abpromise, please visit <https://www.abcam.com/abpromise> or contact our technical team.

Terms and conditions

- Guarantee only valid for products bought direct from Abcam or one of our authorized distributors