


Product datasheet

Anti-RBM5 antibody ab85504

3 References 1 Image

Overview

Product name	Anti-RBM5 antibody
Description	Rabbit polyclonal to RBM5
Host species	Rabbit
Tested applications	Suitable for: WB
Species reactivity	Reacts with: Human Predicted to work with: Mouse, Rat, Rabbit, Horse, Chicken, Guinea pig, Cow, Cat, Dog 
Immunogen	Synthetic peptide corresponding to a region within N-terminal residues 1-50 (GSDKRVSRTERSGRYGSIIDRDDRDERESRSRRRDSDYKRSSDDRRGDR Y) of human RBM5 (NP_005769).
Positive control	HepG2 cell lysate

Properties

Form	Liquid
Storage instructions	Shipped at 4°C. Upon delivery aliquot and store at -20°C. Avoid repeated freeze / thaw cycles.
Storage buffer	Preservative: 0.09% Sodium azide Constituents: PBS, 2% Sucrose
Purity	Immunogen affinity purified
Clonality	Polyclonal
Isotype	IgG

Applications

Our [Abpromise guarantee](#) covers the use of **ab85504** in the following tested applications.

The application notes include recommended starting dilutions; optimal dilutions/concentrations should be determined by the end user.

Application	Abreviews	Notes
WB		Use a concentration of 1 µg/ml. Predicted molecular weight: 92 kDa. Good results were obtained when blocked with 5% non-fat dry milk in 0.05% PBS-T.

Target

Function

Component of the spliceosome A complex. Regulates alternative splicing of a number of mRNAs. May modulate splice site pairing after recruitment of the U1 and U2 snRNPs to the 5' and 3' splice sites of the intron. May both positively and negatively regulate apoptosis by regulating the alternative splicing of several genes involved in this process, including FAS and CASP2/caspase-2. In the case of FAS, promotes exclusion of exon 6 thereby producing a soluble form of FAS that inhibits apoptosis. In the case of CASP2/caspase-2, promotes exclusion of exon 9 thereby producing a catalytically active form of CASP2/Caspase-2 that induces apoptosis.

Tissue specificity

Isoform 5 is widely expressed in normal tissues and is expressed at increased levels in T-leukemic cell lines.

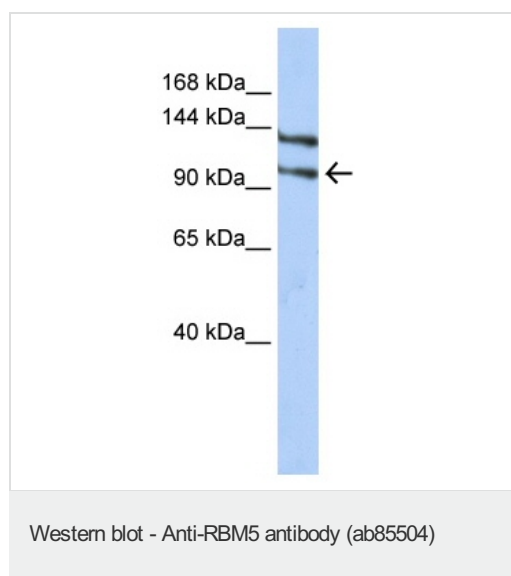
Sequence similarities

Belongs to the RBM5/RBM10 family.
Contains 1 C2H2-type zinc finger.
Contains 1 G-patch domain.
Contains 1 RanBP2-type zinc finger.
Contains 2 RRM (RNA recognition motif) domains.

Cellular localization

Nucleus.

Images



Anti-RBM5 antibody (ab85504) at 1 µg/ml +
HepG2 cell lysate at 10 µg

Secondary

HRP-conjugated anti-Rabbit IgG at 1/50000
dilution

Predicted band size: 92 kDa

Observed band size: 102 kDa

Additional bands at: 142 kDa. We are
unsure as to the identity of these extra bands.

Please note: All products are "FOR RESEARCH USE ONLY AND ARE NOT INTENDED FOR DIAGNOSTIC OR THERAPEUTIC USE"

Our Abpromise to you: Quality guaranteed and expert technical support

- Replacement or refund for products not performing as stated on the datasheet
- Valid for 12 months from date of delivery
- Response to your inquiry within 24 hours
- We provide support in Chinese, English, French, German, Japanese and Spanish
- Extensive multi-media technical resources to help you
- We investigate all quality concerns to ensure our products perform to the highest standards

If the product does not perform as described on this datasheet, we will offer a refund or replacement. For full details of the Abpromise, please visit <https://www.abcam.com/abpromise> or contact our technical team.

Terms and conditions

- Guarantee only valid for products bought direct from Abcam or one of our authorized distributors