

## Product datasheet

# Anti-RFC2 antibody ab3615

★★★★★ 1 Abreviews 2 References 2 Images

### Overview

<b>Product name</b>	Anti-RFC2 antibody
<b>Description</b>	Goat polyclonal to RFC2
<b>Host species</b>	Goat
<b>Specificity</b>	We have data to indicate that this antibody may not cross react with Mouse. However, this has not been conclusively tested and expression levels may vary in certain cell lines/tissues.
<b>Tested applications</b>	<b>Suitable for:</b> WB, ICC/IF
<b>Species reactivity</b>	<b>Reacts with:</b> Human
<b>Immunogen</b>	Synthetic peptide (Human) - which represented a portion of human Replication Factor C 2 40 kDa subunit encoded within exon 1.
<b>Positive control</b>	HeLa cell nuclear extract.

### Properties

<b>Form</b>	Liquid
<b>Storage instructions</b>	Shipped at 4°C. Upon delivery aliquot and store at -20°C. Avoid freeze / thaw cycles.
<b>Storage buffer</b>	Preservative: 0.1% Sodium azide Constituents: 0.021% PBS, 1.764% Sodium citrate, 1.815% Tris
<b>Purity</b>	Immunogen affinity purified
<b>Clonality</b>	Polyclonal
<b>Isotype</b>	IgG

### Applications

Our [Abpromise guarantee](#) covers the use of **ab3615** in the following tested applications.

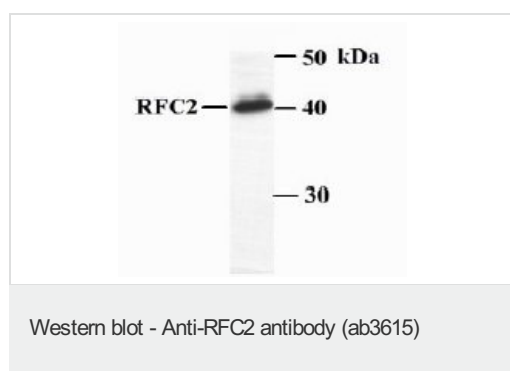
The application notes include recommended starting dilutions; optimal dilutions/concentrations should be determined by the end user.

Application	Abreviews	Notes
WB		1/500 - 1/5000. Detects a band of approximately 40 kDa (predicted molecular weight: 40 kDa).
ICC/IF	★★★★★	1/1000.

## Target

<b>Function</b>	The elongation of primed DNA templates by DNA polymerase delta and epsilon requires the action of the accessory proteins proliferating cell nuclear antigen (PCNA) and activator 1. This subunit binds ATP.
<b>Involvement in disease</b>	Note=RFC2 is located in the Williams-Beuren syndrome (WBS) critical region. WBS results from a hemizygous deletion of several genes on chromosome 7q11.23, thought to arise as a consequence of unequal crossing over between highly homologous low-copy repeat sequences flanking the deleted region.
<b>Sequence similarities</b>	Belongs to the activator 1 small subunits family.
<b>Cellular localization</b>	Nucleus.

## Images

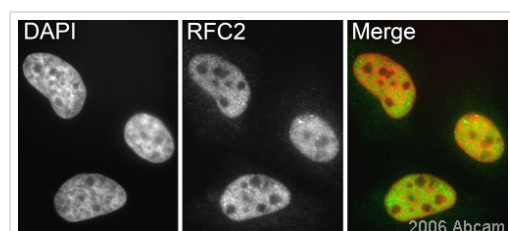


Sample: 50µg HeLa cell nuclear extract

anti-RFC 2 (exon 1) (ab3615) used at 1:1000 dilution

Sample: 50µg HeLa cell nuclear extract

anti-RFC 2 (exon 1) (ab3615) used at 1:1000 dilution



Immunocytochemistry/ Immunofluorescence - Anti-RFC2 antibody (ab3615)

This image is courtesy of an Abreview submitted by Dr Kirk McManus

ab3615 (1/1000) staining RFC2 in asynchronous HeLa cells by ICC/IF, using a secondary Donkey anti-goat antibody (1/200) conjugated to Alexa Fluor® 488 (green). Cells were counterstained with DAPI (red) in order to show the nucleus.

**Please note:** All products are "FOR RESEARCH USE ONLY AND ARE NOT INTENDED FOR DIAGNOSTIC OR THERAPEUTIC USE"

## Our Abpromise to you: Quality guaranteed and expert technical support

- Replacement or refund for products not performing as stated on the datasheet
- Valid for 12 months from date of delivery
- Response to your inquiry within 24 hours

- We provide support in Chinese, English, French, German, Japanese and Spanish
- Extensive multi-media technical resources to help you
- We investigate all quality concerns to ensure our products perform to the highest standards

If the product does not perform as described on this datasheet, we will offer a refund or replacement. For full details of the Abpromise, please visit <https://www.abcam.com/abpromise> or contact our technical team.

### **Terms and conditions**

---

- Guarantee only valid for products bought direct from Abcam or one of our authorized distributors