




Product datasheet

Anti-RGS13 antibody ab28467

1 Image

Overview

<b>Product name</b>	Anti-RGS13 antibody
<b>Description</b>	Rabbit polyclonal to RGS13
<b>Host species</b>	Rabbit
<b>Specificity</b>	ab28467 recognises regulator of G-protein signaling 13 (RGS13).
<b>Tested applications</b>	<b>Suitable for:</b> ELISA, WB
<b>Species reactivity</b>	<b>Reacts with:</b> Human <b>Predicted to work with:</b> Mouse, Rat, Rabbit, Horse, Cow, Dog 
<b>Immunogen</b>	Synthetic peptide within Human RGS13 aa 77-126 (internal sequence). The exact sequence is proprietary. Sequence: WSRISRAKKLYKMQPQSPREINIDSSTRETIIRNIQEPTE TCFEEAQK  Database link: <a href="#">O14921</a>   <a href="#">Run BLAST with</a>  <a href="#">Run BLAST with</a>
<b>Positive control</b>	Daudi cell lysate

Properties

<b>Form</b>	Liquid
<b>Storage instructions</b>	Shipped at 4°C. Upon delivery aliquot and store at -20°C. Avoid freeze / thaw cycles.
<b>Storage buffer</b>	Preservative: 0.09% Sodium azide Constituents: 2% Sucrose, PBS
<b>Purity</b>	Immunogen affinity purified
<b>Clonality</b>	Polyclonal
<b>Isotype</b>	IgG

Applications

Our [Abpromise guarantee](#) covers the use of **ab28467** in the following tested applications.

The application notes include recommended starting dilutions; optimal dilutions/concentrations should be determined by the end user.

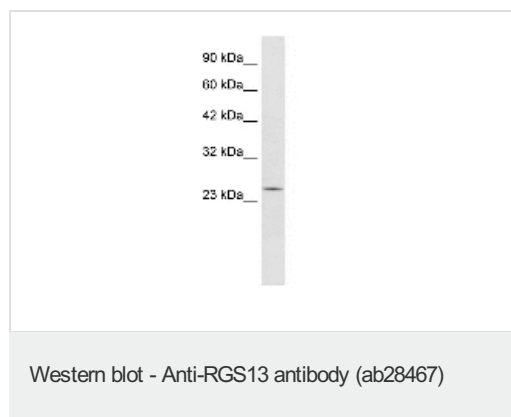
Application	Abreviews	Notes
ELISA		1/62500.
WB		Use a concentration of 0.5 µg/ml. Detects a band of approximately 25 kDa (predicted molecular weight: 19 kDa). Good results were obtained when blocked with 5% non-fat dry milk in 0.05% PBS-T.

## Target

**Function** Inhibits signal transduction by increasing the GTPase activity of G protein alpha subunits thereby driving them into their inactive GDP-bound form. Binds to both G(i)-alpha and G(q)-alpha.

**Sequence similarities** Contains 1 RGS domain.

## Images



Anti-RGS13 antibody (ab28467) at 0.5 µg/ml

**Predicted band size:** 19 kDa

RGS13 detected in Daudi cell lysate. Gel concentration: 12%. An HRP conjugated anti-Rabbit was used as secondary antibody (suggested dilution 1: 50,000 - 100,000).

**Please note:** All products are "FOR RESEARCH USE ONLY AND ARE NOT INTENDED FOR DIAGNOSTIC OR THERAPEUTIC USE"

## Our Abpromise to you: Quality guaranteed and expert technical support

- Replacement or refund for products not performing as stated on the datasheet
- Valid for 12 months from date of delivery
- Response to your inquiry within 24 hours
- We provide support in Chinese, English, French, German, Japanese and Spanish
- Extensive multi-media technical resources to help you
- We investigate all quality concerns to ensure our products perform to the highest standards

If the product does not perform as described on this datasheet, we will offer a refund or replacement. For full details of the Abpromise, please visit <https://www.abcam.com/abpromise> or contact our technical team.

## Terms and conditions

- Guarantee only valid for products bought direct from Abcam or one of our authorized distributors