

Product datasheet

Anti-RP105 antibody ab45430

[3 Images](#)

Overview

Product name	Anti-RP105 antibody
Description	Rabbit polyclonal to RP105
Host species	Rabbit
Tested applications	Suitable for: IHC-P, ICC/IF, WB
Species reactivity	Reacts with: Mouse, Human
Immunogen	Synthetic 14 amino acid peptide from near the center of human RP105.
Positive control	Human spleen tissue lysate.

Properties

Form	Liquid
Storage instructions	Shipped at 4°C. Store at +4°C.
Storage buffer	Preservative: 0.02% Sodium Azide Constituents: PBS
Purity	Immunogen affinity purified
Clonality	Polyclonal
Isotype	IgG

Applications

Our [Abpromise guarantee](#) covers the use of **ab45430** in the following tested applications.

The application notes include recommended starting dilutions; optimal dilutions/concentrations should be determined by the end user.

Application	Abreviews	Notes
IHC-P		Use a concentration of 2 µg/ml.
ICC/IF		Use a concentration of 20 µg/ml.
WB		Use a concentration of 0.5 - 1 µg/ml. Predicted molecular weight: 74 kDa.

Target

Function

May cooperate with MD-1 and TLR4 to mediate the innate immune response to bacterial lipopolysaccharide (LPS) in B-cells. Leads to NF-kappa-B activation. Also involved in the life/death decision of B-cells.

Tissue specificity

Expressed mainly on mature peripheral B cells. Detected in spleen, lymph node and appendix. Not detected in pre-B and -T cells.

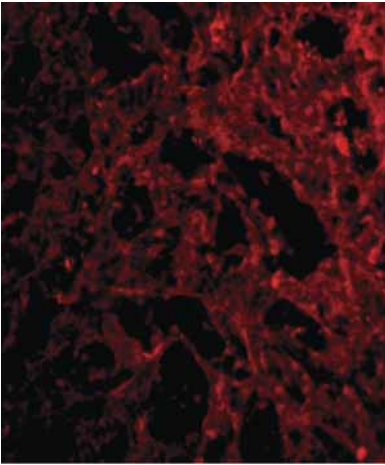
Sequence similarities

Belongs to the Toll-like receptor family.
Contains 19 LRR (leucine-rich) repeats.
Contains 1 LRRCT domain.

Cellular localization

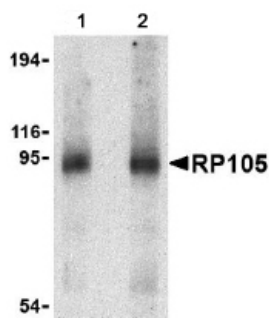
Cell membrane.

Images



Immunofluorescence of RP105 in Human spleen tissue with ab45430 at 10 µg/mL.

Immunocytochemistry/ Immunofluorescence - Anti-RP105 antibody (ab45430)



Lane 1 : Anti-RP105 antibody (ab45430) at 0.5 µg/ml

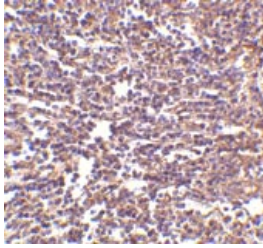
Lane 2 : Anti-RP105 antibody (ab45430) at 1 µg/ml

All lanes : Human spleen tissue lysate

Lysates/proteins at 15 µg per lane.

Western blot - Anti-RP105 antibody (ab45430)

Predicted band size: 74 kDa



ab45430 at 2 μ g/ml staining RP105 in human spleen tissue by IHC

Immunohistochemistry (Formalin/PFA-fixed paraffin-embedded sections) - Anti-RP105 antibody (ab45430)

Please note: All products are "FOR RESEARCH USE ONLY AND ARE NOT INTENDED FOR DIAGNOSTIC OR THERAPEUTIC USE"

Our Abpromise to you: Quality guaranteed and expert technical support

- Replacement or refund for products not performing as stated on the datasheet
- Valid for 12 months from date of delivery
- Response to your inquiry within 24 hours
- We provide support in Chinese, English, French, German, Japanese and Spanish
- Extensive multi-media technical resources to help you
- We investigate all quality concerns to ensure our products perform to the highest standards

If the product does not perform as described on this datasheet, we will offer a refund or replacement. For full details of the Abpromise, please visit <https://www.abcam.com/abpromise> or contact our technical team.

Terms and conditions

- Guarantee only valid for products bought direct from Abcam or one of our authorized distributors