

Product datasheet

Anti-RPL36 antibody ab103246

1 Image

Overview

Product name	Anti-RPL36 antibody
Description	Rabbit polyclonal to RPL36
Host species	Rabbit
Tested applications	Suitable for: WB
Species reactivity	Reacts with: Human
Immunogen	Synthetic peptide conjugated to KLH, corresponding to a region within N terminal amino acids 21-50 of Human RPL36 (NP_378669).
Positive control	A2058, MDA-MB435 and 293 cell lysates

Properties

Form	Liquid
Storage instructions	Shipped at 4°C. Store at 4°C (up to 6 months). Store at -20°C long term.
Storage buffer	Preservative: 0.09% Sodium azide Constituent: PBS
Purity	Immunogen affinity purified
Purification notes	ab103246 is purified through a protein A column, followed by peptide affinity purification.
Clonality	Polyclonal
Isotype	IgG

Applications

Our [Abpromise guarantee](#) covers the use of **ab103246** in the following tested applications.

The application notes include recommended starting dilutions; optimal dilutions/concentrations should be determined by the end user.

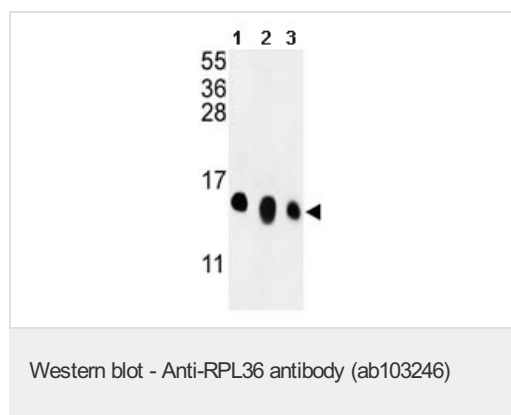
Application	Abreviews	Notes
WB		1/100 - 1/500. Predicted molecular weight: 12 kDa.

Target

Sequence similarities

Belongs to the ribosomal protein L36e family.

Images



All lanes : Anti-RPL36 antibody (ab103246) at 1/100 dilution

Lane 1 : A2058 cell lysate

Lane 2 : MDA-MB435 cell lysate

Lane 3 : 293 cell lysate

Lysates/proteins at 35 µg per lane.

Predicted band size: 12 kDa

Please note: All products are "FOR RESEARCH USE ONLY AND ARE NOT INTENDED FOR DIAGNOSTIC OR THERAPEUTIC USE"

Our Abpromise to you: Quality guaranteed and expert technical support

- Replacement or refund for products not performing as stated on the datasheet
- Valid for 12 months from date of delivery
- Response to your inquiry within 24 hours
- We provide support in Chinese, English, French, German, Japanese and Spanish
- Extensive multi-media technical resources to help you
- We investigate all quality concerns to ensure our products perform to the highest standards

If the product does not perform as described on this datasheet, we will offer a refund or replacement. For full details of the Abpromise, please visit <https://www.abcam.com/abpromise> or contact our technical team.

Terms and conditions

- Guarantee only valid for products bought direct from Abcam or one of our authorized distributors