


Product datasheet

Anti-RSF1 antibody ab83322

1 Image

Overview

Product name	Anti-RSF1 antibody
Description	Rabbit polyclonal to RSF1
Host species	Rabbit
Tested applications	Suitable for: ELISA, WB
Species reactivity	Reacts with: Human Predicted to work with: Mouse, Rat, Rabbit, Horse, Guinea pig, Cow, Cat, Dog, Pig 
Immunogen	Synthetic peptide corresponding to a region within internal sequence amino acids 1116-1165 (QDEFVVS DEN PDESEEDPPS NDDSDTDFCS RRLRRHPSRP MRQSRLRRK) of human RSF1 (NP_057662). Run BLAST with ExPASy Run BLAST with NCBI
Positive control	Human fetal lung lysate

Properties

Form	Liquid
Storage instructions	Shipped at 4°C. Upon delivery aliquot and store at -20°C. Avoid repeated freeze / thaw cycles.
Storage buffer	Preservative: 0.09% Sodium azide Constituents: 2% Sucrose, PBS
Purity	Immunogen affinity purified
Purification notes	Purified by peptide affinity chromatography method.
Clonality	Polyclonal
Isotype	IgG

Applications

Our [Abpromise guarantee](#) covers the use of **ab83322** in the following tested applications.

The application notes include recommended starting dilutions; optimal dilutions/concentrations should be determined by the end user.

Application	Abreviews	Notes
ELISA		Use at an assay dependent concentration. ELISA titre using peptide based assay, 1:12500.
WB		Use a concentration of 1 µg/ml. Predicted molecular weight: 163 kDa. Good results were obtained when blocked with 5% non-fat dry milk in 0.05% PBS-T.

Target

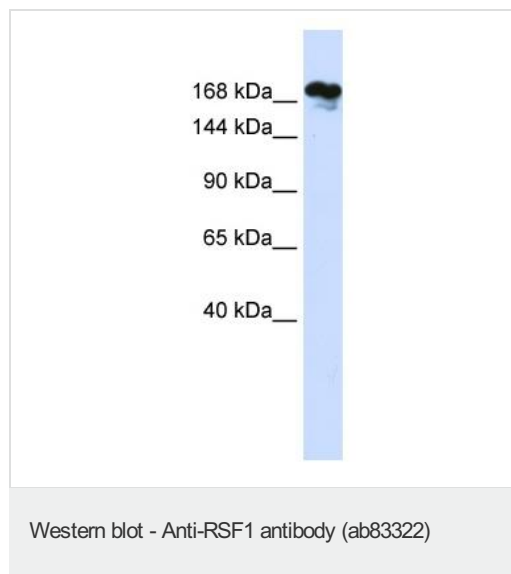
Relevance

RSF1 is involved in transcription repression when recruited to DNA via the DNA binding of GAL4. It is also involved in chromatin remodeling and spacing when associated with SNF2H and transcription coactivation when associated with hepatitis B virus X protein (HBX). The RSF1 gene is localized to the long arm of human chromosome 11 between q13.4 and q14.1. This region is amplified and rearranged in many tumors, indicating that it plays a role in tumorigenesis similar to that of other PHD-containing proteins.

Cellular localization

Nuclear

Images



Anti-RSF1 antibody (ab83322) at 1 µg/ml (in 5% skim milk / PBS buffer) + human fetal lung lysate at 10 µg

Secondary

HRP conjugated anti-Rabbit IgG at 1/50000 dilution

Predicted band size: 163 kDa

Observed band size: 168 kDa

Gel Concentration: 6-18%

Please note: All products are "FOR RESEARCH USE ONLY AND ARE NOT INTENDED FOR DIAGNOSTIC OR THERAPEUTIC USE"

Our Abpromise to you: Quality guaranteed and expert technical support

- Replacement or refund for products not performing as stated on the datasheet
- Valid for 12 months from date of delivery
- Response to your inquiry within 24 hours
- We provide support in Chinese, English, French, German, Japanese and Spanish

- Extensive multi-media technical resources to help you
- We investigate all quality concerns to ensure our products perform to the highest standards

If the product does not perform as described on this datasheet, we will offer a refund or replacement. For full details of the Abpromise, please visit <https://www.abcam.com/abpromise> or contact our technical team.

Terms and conditions

- Guarantee only valid for products bought direct from Abcam or one of our authorized distributors