

## Product datasheet

# Rabbit Anti-Rat IgG H&L (FITC) ab6730

★★★★★ 1 Abreviews 8 References 1 Image

### Overview

<b>Product name</b>	Rabbit Anti-Rat IgG H&L (FITC)
<b>Host species</b>	Rabbit
<b>Target species</b>	Rat
<b>Tested applications</b>	<b>Suitable for:</b> Immunomicroscopy, Flow Cyt, ICC/IF, IHC-P, IHC-Fr, ELISA
<b>Immunogen</b>	Rat whole molecule
<b>Conjugation</b>	FITC. Ex: 493nm, Em: 528nm

### Properties

<b>Form</b>	Liquid
<b>Storage instructions</b>	Shipped at 4°C. Store at +4°C.
<b>Storage buffer</b>	pH: 7.20 Preservative: 0.01% Sodium azide Constituents: 0.42% Potassium phosphate, 0.87% Sodium chloride, 1% BSA
<b>Purity</b>	Affinity purified
<b>Purification notes</b>	This product was prepared from monospecific antiserum by immunoaffinity chromatography using Rat IgG coupled to agarose beads followed by solid phase adsorption(s) to remove any unwanted reactivities.
<b>Conjugation notes</b>	Diaminotriazinylaminofluorescein (DTAF) (Molecular Weight 530 daltons) Absorption Wavelength: 495 nm Emission Wavelength: 528 nm Fluorochrome/Protein Ratio: 2.3 moles DTAF per mole of Rabbit IgG
<b>Clonality</b>	Polyclonal

### Applications

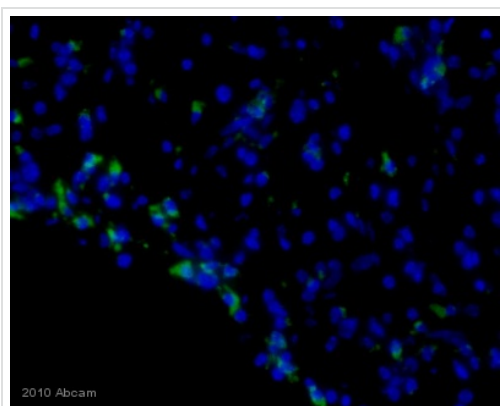
Our [Abpromise guarantee](#) covers the use of **ab6730** in the following tested applications.

The application notes include recommended starting dilutions; optimal dilutions/concentrations should be determined by the end user.

Application	Abreviews	Notes
Immunomicroscopy		Use at an assay dependent concentration.

Application	Abreviews	Notes
Flow Cyt		Use at an assay dependent dilution.
ICC/IF	★★★★★	1/1000 - 1/5000.
IHC-P		Use at an assay dependent concentration.
IHC-Fr		Use at an assay dependent concentration.
ELISA		1/10000 - 1/50000.

## Images



Ab6730 was used at dilution 1/500 with the primary antibody [ab53444](#) in IHC-Fr. See the review on [ab53444](#).

Immunohistochemistry (Frozen sections) - Rabbit polyclonal Secondary Antibody to Rat IgG - H&L (FITC) (ab6730)

**Please note:** All products are "FOR RESEARCH USE ONLY AND ARE NOT INTENDED FOR DIAGNOSTIC OR THERAPEUTIC USE"

## Our Abpromise to you: Quality guaranteed and expert technical support

- Replacement or refund for products not performing as stated on the datasheet
- Valid for 12 months from date of delivery
- Response to your inquiry within 24 hours
- We provide support in Chinese, English, French, German, Japanese and Spanish
- Extensive multi-media technical resources to help you
- We investigate all quality concerns to ensure our products perform to the highest standards

If the product does not perform as described on this datasheet, we will offer a refund or replacement. For full details of the Abpromise, please visit <https://www.abcam.com/abpromise> or contact our technical team.

## Terms and conditions

- Guarantee only valid for products bought direct from Abcam or one of our authorized distributors