

Product datasheet

Anti-Rb2 p130 (phospho S952) antibody [EP2387AY] ab68136

Recombinant RabMAB

[2 References](#) [2 Images](#)

Overview

Product name	Anti-Rb2 p130 (phospho S952) antibody [EP2387AY]
Description	Rabbit monoclonal [EP2387AY] to Rb2 p130 (phospho S952)
Host species	Rabbit
Tested applications	Suitable for: WB, IHC-P, ICC Unsuitable for: Flow Cyt or IP
Species reactivity	Reacts with: Mouse, Human
Immunogen	A synthetic phospho-peptide corresponding to residues surrounding serine 952 of human p130
Positive control	Jurkat cell lysate; human breast carcinoma tissue
General notes	Rat: We have preliminary internal testing data to indicate this antibody may not react with this species. Please contact us for more information.

Our RabMAB[®] technology is a patented hybridoma-based technology for making rabbit monoclonal antibodies. For details on our patents, please refer to [RabMab[®] patents](#)

This product is a recombinant rabbit monoclonal antibody.

Properties

Form	Liquid
Storage instructions	Shipped at 4°C. Store at -20°C. Stable for 12 months at -20°C.
Storage buffer	pH: 7.40 Preservative: 0.05% Sodium azide Constituents: 0.1% BSA, 40% Glycerol, 9.85% Tris glycine, 50% Tissue culture supernatant
Purity	Tissue culture supernatant
Clonality	Monoclonal
Clone number	EP2387AY
Isotype	IgG

Applications

Our [Abpromise guarantee](#) covers the use of **ab68136** in the following tested applications.

The application notes include recommended starting dilutions; optimal dilutions/concentrations should be determined by the end user.

Application	Abreviews	Notes
WB		
IHC-P		
ICC		

Application notes

ICC: 1/100 - 1/250.

IHC-P: 1/100 - 1/250.

WB: 1/10000 - 1/500000. Detects a band of approximately 128 kDa (predicted molecular weight: 128 kDa).

Is unsuitable for Flow Cyt or IP.

Not yet tested in other applications.

Optimal dilutions/concentrations should be determined by the end user.

Target

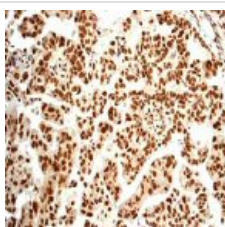
Relevance

Two retinoblastoma related proteins, p107 and pRb2 / p130, which are structurally and functionally similar to the product of the retinoblastoma gene (pRb / p105), were cloned by taking advantage of their ability to bind transforming proteins of DNA tumor viruses through a particular region called the "pocket domain." Like pRb, both proteins play a fundamental role in growth control. These Rb family proteins were measured in a variety of lung neoplasms. The highest percentage of undetectable levels and the tightest inverse correlation with the histological grading and with PCNA expression in the most aggressive tumor types were found for pRb2 / p130, which may suggest an important role for this protein in the pathogenesis and progression of lung cancer.

Cellular localization

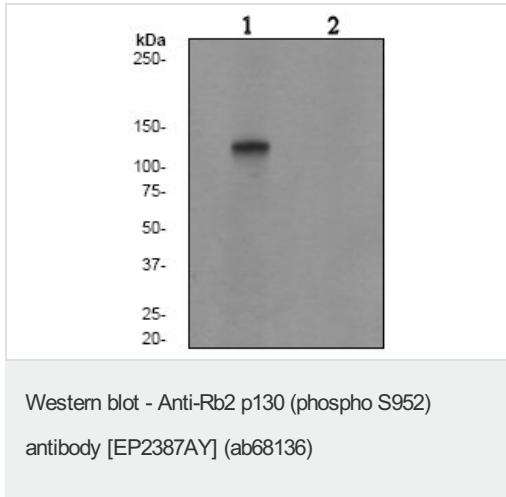
Nuclear

Images



Immunohistochemical analysis of paraffin-embedded human breast carcinoma tissue using ab68136 at a dilution of 1/100.

Immunohistochemistry (Formalin/PFA-fixed paraffin-embedded sections) - Anti-Rb2 p130 (phospho S952) antibody [EP2387AY] (ab68136)



All lanes : Anti-Rb2 p130 (phospho S952) antibody [EP2387AY] (ab68136) at 1/500000 dilution

Lane 1 : Jurkat cell lysate, untreated

Lane 2 : Jurkat cell lysate, treated with AP

Lysates/proteins at 10 µg per lane.

Secondary

All lanes : HRP-labeled goat anti-mouse at 1/2000 dilution

Predicted band size: 128 kDa

Observed band size: 128 kDa

Please note: All products are "FOR RESEARCH USE ONLY AND ARE NOT INTENDED FOR DIAGNOSTIC OR THERAPEUTIC USE"

Our Abpromise to you: Quality guaranteed and expert technical support

- Replacement or refund for products not performing as stated on the datasheet
- Valid for 12 months from date of delivery
- Response to your inquiry within 24 hours
- We provide support in Chinese, English, French, German, Japanese and Spanish
- Extensive multi-media technical resources to help you
- We investigate all quality concerns to ensure our products perform to the highest standards

If the product does not perform as described on this datasheet, we will offer a refund or replacement. For full details of the Abpromise, please visit <https://www.abcam.com/abpromise> or contact our technical team.

Terms and conditions

- Guarantee only valid for products bought direct from Abcam or one of our authorized distributors