


Product datasheet

Anti-RbBP5 antibody ab80074

1 Image

Overview

| | |
|----------------------------|--|
| Product name | Anti-RbBP5 antibody |
| Description | Rabbit polyclonal to RbBP5 |
| Host species | Rabbit |
| Tested applications | Suitable for: WB |
| Species reactivity | Reacts with: Human Predicted to work with: Cow, Zebrafish  |
| Immunogen | Synthetic peptide conjugated to KLH derived from within residues 50 - 150 of Human RbBP5. Read Abcam's proprietary immunogen policy (Peptide available as ab87828 .) |
| Positive control | This antibody gave a positive signal in the following whole cell lysates: WERI; Y79; SW480; HEK293. |

Properties

| | |
|-----------------------------|--|
| Form | Liquid |
| Storage instructions | Shipped at 4°C. Store at +4°C short term (1-2 weeks). Upon delivery aliquot. Store at -20°C or -80°C. Avoid freeze / thaw cycle. |
| Storage buffer | Preservative: 0.02% Sodium Azide Constituents: 1% BSA, PBS, pH 7.4 |
| Purity | Immunogen affinity purified |
| Clonality | Polyclonal |
| Isotype | IgG |

Applications

Our [Abpromise guarantee](#) covers the use of **ab80074** in the following tested applications.

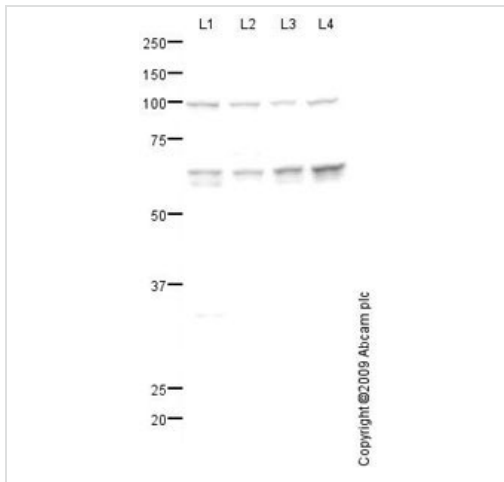
The application notes include recommended starting dilutions; optimal dilutions/concentrations should be determined by the end user.

| Application | Abreviews | Notes |
|-------------|-----------|--|
| WB | | Use a concentration of 1 µg/ml. Detects a band of approximately 60 kDa (predicted molecular weight: 59 kDa). |

Target

| | |
|---|---|
| Function | As part of the MLL1/MLL complex it is involved in methylation and dimethylation at 'Lys-4' of histone H3. H3 'Lys-4' methylation represents a specific tag for epigenetic transcriptional activation. |
| Tissue specificity | Ubiquitously expressed. |
| Sequence similarities | Contains 6 WD repeats. |
| Post-translational modifications | Phosphorylated upon DNA damage, probably by ATM or ATR. |
| Cellular localization | Nucleus. |

Images



Western blot - Anti-RbBP5 antibody (ab80074)

All lanes : Anti-RbBP5 antibody (ab80074) at 1 µg/ml

Lane 1 : WERI (Human Retinoblastoma) Whole Cell Lysate

Lane 2 : Y79 (Human retinoblastoma cell line) Whole Cell Lysate

Lane 3 : SW480 (Human colon adenocarcinoma cell line) Whole Cell Lysate

Lane 4 : HEK293 (Human embryonic kidney cell line) Whole Cell Lysate

Lysates/proteins at 10 µg per lane.

Secondary

All lanes : Goat polyclonal to Rabbit IgG - H&L - Pre-Adsorbed (HRP) at 1/3000 dilution

Developed using the ECL technique.

Performed under reducing conditions.

Predicted band size: 59 kDa

Observed band size: 60,65 kDa

Additional bands at: 100 kDa. We are unsure as to the identity of these extra bands.

Exposure time: 30 seconds

RbBP5 contains a number of potential phosphorylation sites (SwissProt) which may explain the migration pattern observed. The antibody should cross-react with both isoform 1 (59-kDa) and isoform 2 (55-kDa) of RbBP5.

Please note: All products are "FOR RESEARCH USE ONLY AND ARE NOT INTENDED FOR DIAGNOSTIC OR THERAPEUTIC USE"

Our Abpromise to you: Quality guaranteed and expert technical support

- Replacement or refund for products not performing as stated on the datasheet
- Valid for 12 months from date of delivery
- Response to your inquiry within 24 hours

- We provide support in Chinese, English, French, German, Japanese and Spanish
- Extensive multi-media technical resources to help you
- We investigate all quality concerns to ensure our products perform to the highest standards

If the product does not perform as described on this datasheet, we will offer a refund or replacement. For full details of the Abpromise, please visit <https://www.abcam.com/abpromise> or contact our technical team.

Terms and conditions

- Guarantee only valid for products bought direct from Abcam or one of our authorized distributors