

Product datasheet

Recombinant Human 14-3-3 Tau protein ab85978

1 Image

Overview

---

**Product name** Recombinant Human 14-3-3 Tau protein  
**Protein length** Full length protein

Description

---

**Nature** Recombinant  
**Source** Escherichia coli

Amino Acid Sequence

**Accession** [P27348](#)  
**Species** Human  
**Sequence** MEKTELIQKA KLAEQAERYD DMATCMKAVT  
 EQGAELSNEE RNLLSVAYKN VVGRRSAWR  
 VISSIEQKTD TSDKKLQLIK DYREKVESEL  
 RSICTTVLEL LDKYLIANAT NPESKVFYK  
 MKGDYFRYLA EVACGDDRKQ TIDNSQGAYQ  
 EAFDISKKEM QPTHPIRLGL ALNFSVFYYE  
 ILNPELACT LAKTAFDEAI AELDTLNEDS  
 YKDSTLIMQL LRDNLTLWTS DSAGEECDAA EGAEN  
**Molecular weight** 27 kDa  
**Amino acids** 1 to 245

Specifications

---

Our [Abpromise guarantee](#) covers the use of **ab85978** in the following tested applications.

The application notes include recommended starting dilutions; optimal dilutions/concentrations should be determined by the end user.

**Applications** SDS-PAGE  
**Purity** > 95 % SDS-PAGE.  
 ab85978 was purified using conventional chromatography techniques.  
**Form** Liquid

Preparation and Storage

---

## Stability and Storage

Shipped at 4°C. Store at +4°C short term (1-2 weeks). Upon delivery aliquot. Store at -20°C. Avoid freeze / thaw cycle.

pH: 7.4

Constituents: Phosphate Buffer, 10% Glycerol

## General Info

### Function

Adapter protein implicated in the regulation of a large spectrum of both general and specialized signaling pathways. Binds to a large number of partners, usually by recognition of a phosphoserine or phosphothreonine motif. Binding generally results in the modulation of the activity of the binding partner. Negatively regulates the kinase activity of PDPK1.

### Tissue specificity

Abundantly expressed in brain, heart and pancreas, and at lower levels in kidney and placenta. Up-regulated in the lumbar spinal cord from patients with sporadic amyotrophic lateral sclerosis (ALS) compared with controls, with highest levels of expression in individuals with predominant lower motor neuron involvement.

### Sequence similarities

Belongs to the 14-3-3 family.

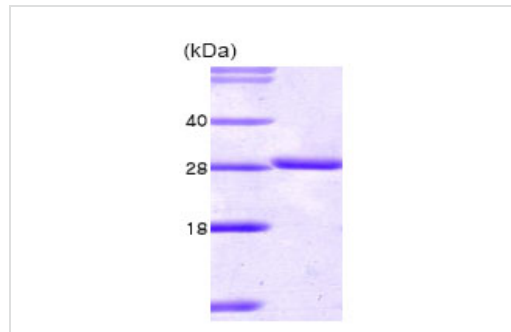
### Post-translational modifications

Ser-232 is probably phosphorylated by CK1.

### Cellular localization

Cytoplasm. In neurons, axonally transported to the nerve terminals.

## Images



SDS-PAGE - 14-3-3 Tau protein (Human) (ab85978)

15% SDS-PAGE showing ab85978 at approximately 27kDa (3µg).

**Please note:** All products are "FOR RESEARCH USE ONLY AND ARE NOT INTENDED FOR DIAGNOSTIC OR THERAPEUTIC USE"

## Our Abpromise to you: Quality guaranteed and expert technical support

- Replacement or refund for products not performing as stated on the datasheet
- Valid for 12 months from date of delivery
- Response to your inquiry within 24 hours
- We provide support in Chinese, English, French, German, Japanese and Spanish
- Extensive multi-media technical resources to help you
- We investigate all quality concerns to ensure our products perform to the highest standards

If the product does not perform as described on this datasheet, we will offer a refund or replacement. For full details of the Abpromise, please visit <https://www.abcam.com/abpromise> or contact our technical team.

### **Terms and conditions**

---

- Guarantee only valid for products bought direct from Abcam or one of our authorized distributors