

Product datasheet

Recombinant Human A1BG protein ab116793

1 Image

Overview

<b>Product name</b>	Recombinant Human A1BG protein
<b>Protein length</b>	Full length protein

Description

<b>Nature</b>	Recombinant
<b>Source</b>	Wheat germ

Amino Acid Sequence

<b>Accession</b>	<a href="#">P04217-2</a>
<b>Species</b>	Human
<b>Sequence</b>	MAPVSWITPGLKTTAVCRGVLRGVTFLLRREGDHEFLEVPEAQEDVEATF PVHQPGNYSCSYRTDGEALSEPSATVTIEELAAPPPVLMHHGESSQVL HPGNKVTLTCVAPLSGVDFQLRRGEKELLVPRSSSTSPDRIFFHLNAVALG DGGHYTCRYRLH DNQNGWSGDSAPVELILSDETLPAPEFSPEPESGRA LRLRCLAPLEGARFALVREDRGRRVHRFQSPAGTEALFELHNISVADSA NYSCVYVDLKPPFGGSAPSERL ELHVDGPPPRPQLRATWSGAVLAGRD AVLRCGPIPDVTFELLREGETKAVKTVRTPGAAANLELIFVGPQHAGNY RCRYRSWVPHTFESELSDPVELLVAES

<b>Molecular weight</b>	67 kDa including tags
<b>Amino acids</b>	1 to 373

Specifications

Our [Abpromise guarantee](#) covers the use of **ab116793** in the following tested applications.

The application notes include recommended starting dilutions; optimal dilutions/concentrations should be determined by the end user.

<b>Applications</b>	Western blot SDS-PAGE ELISA
<b>Form</b>	Liquid

**Additional notes**

Protein concentration is above or equal to 0.05 mg/ml.  
Best used within three months from the date of receipt.

**Preparation and Storage**

---

**Stability and Storage**

Shipped on dry ice. Upon delivery aliquot and store at -80°C. Avoid freeze / thaw cycles.

pH: 8.00

Constituents: 0.3% Glutathione, 0.79% Tris HCl

**General Info**

---

**Tissue specificity**

Plasma.

**Sequence similarities**

Contains 5 Ig-like V-type (immunoglobulin-like) domains.

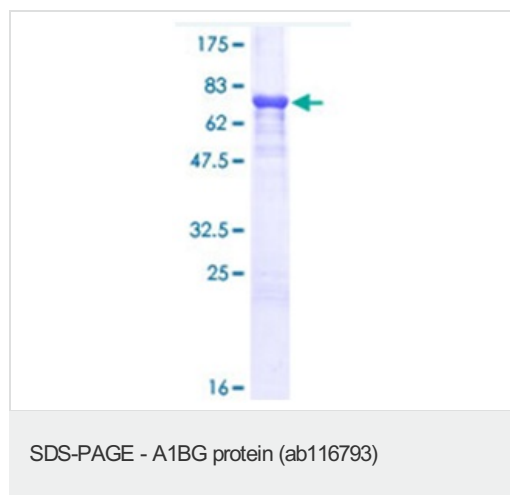
**Cellular localization**

Secreted.

---

**Images**

---



12.5% SDS-PAGE showing ab116793 at approximately 67.14kDa.

Stained with Coomassie Blue.

**Please note:** All products are "FOR RESEARCH USE ONLY AND ARE NOT INTENDED FOR DIAGNOSTIC OR THERAPEUTIC USE"

**Our Abpromise to you: Quality guaranteed and expert technical support**

---

- Replacement or refund for products not performing as stated on the datasheet
- Valid for 12 months from date of delivery
- Response to your inquiry within 24 hours
- We provide support in Chinese, English, French, German, Japanese and Spanish
- Extensive multi-media technical resources to help you
- We investigate all quality concerns to ensure our products perform to the highest standards

If the product does not perform as described on this datasheet, we will offer a refund or replacement. For full details of the Abpromise, please visit <https://www.abcam.com/abpromise> or contact our technical team.

## Terms and conditions

---

- Guarantee only valid for products bought direct from Abcam or one of our authorized distributors