

Product datasheet

Recombinant Human ALS2CR8 protein ab164116

1 Image

Overview

<b>Product name</b>	Recombinant Human ALS2CR8 protein
<b>Protein length</b>	Full length protein

Description

<b>Nature</b>	Recombinant
<b>Source</b>	Wheat germ
<b>Amino Acid Sequence</b>	
<b>Species</b>	Human

<b>Sequence</b>	<p>MEQSNDSLRVNHNDGEESKTSAQVFEHLICMDSRDS  SFGQNDSPVLPIT  TREANNSLISQNIPGPLTQTQTLSAEQFHLVDQNGQAIQ  YELQSLGESNA  QMMIVASPTENGQVLRVIPPTQTGMAQV IIPQGQLVDV  NSPRDVPEEKPS  NRNLPTVRVDTLADNTSNYLHPQTSFPLPKKSVTGML  EEPLLGPLQPLS  SNTPIWACRLRSCEKIGDSYRGYCVSETELESVLT FHK  QQTQSVWGTRQS  PSPAKPATRLMWKSQYVPYDGIPFVNAGSRAVVM E C  QYGPRRKGFQLKKV  SEQESRSCQLYKATCPARIYKKVQKFPEYRVPTDPKID  KKIIRMEQEKA  FNMLKKNLVDAGGVLRWYVQLPTQQAHQYHELET PCL  TLSPSPFPVSSLE  EEETAVRDENCALPSRLHPQVAHKIQELVSQGIEQVYA  VRKQLRK FVERE  LFKPDEVPERHNLSFFPTVNDIKNHIHEVQKSLRNGDT  VYNSEIIPATLQ  WTTDSGNILKETMTVTFAEGNSPGESITTKVETNQTRG  SLSPEPTHLLSS  LSSFQPKIFTQLQGLQLQPRYTSPDESPAVVSVNNQP  SSSPSGLLDTIGS  AVMNNNSLLLQSHSLQRDTCLTQNNSTASTMGNLPE  PDQNLVAMDELVE  VGDVEDTGNLEGTVHRILLGDVQTIPIQIIDNHSALIEENP</p>
-----------------	--

<b>Amino acids</b>	1 to 718
<b>Tags</b>	proprietary tag N-Terminus

### Specifications

Our [Abpromise guarantee](#) covers the use of **ab164116** in the following tested applications.

The application notes include recommended starting dilutions; optimal dilutions/concentrations should be determined by the end user.

<b>Applications</b>	ELISA Western blot
<b>Form</b>	Liquid
<b>Additional notes</b>	Protein concentration is above or equal to 0.05 mg/ml.

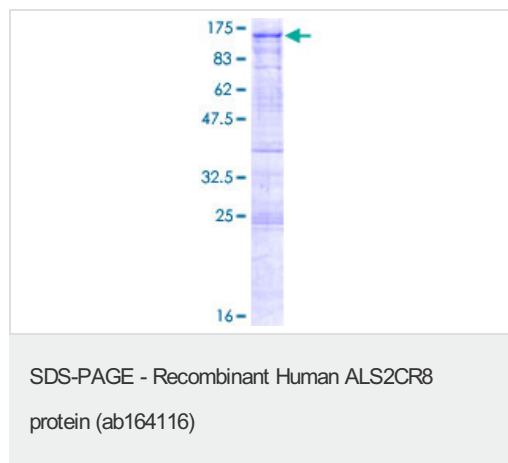
### Preparation and Storage

<b>Stability and Storage</b>	Shipped on dry ice. Upon delivery aliquot and store at -80°C. Avoid freeze / thaw cycles. pH: 8.00 Constituents: 0.31% Glutathione, 0.79% Tris HCl
------------------------------	--

### General Info

<b>Function</b>	Acts as a transcriptional activator that mediates the calcium- and neuron-selective induction of BDNF exon III transcription. Binds to the consensus calcium-response element CaRE1 5'-CTATTCGAG-3' sequence.
<b>Domain</b>	The N-terminus is necessary for DNA-binding. The C-terminus is necessary for transcriptional activation (PubMed:11832226).
<b>Cellular localization</b>	Nucleus.

### Images



ab164116 on a 12.5% SDS-PAGE stained with Coomassie Blue.

## **Our Abpromise to you: Quality guaranteed and expert technical support**

---

- Replacement or refund for products not performing as stated on the datasheet
- Valid for 12 months from date of delivery
- Response to your inquiry within 24 hours
  
- We provide support in Chinese, English, French, German, Japanese and Spanish
- Extensive multi-media technical resources to help you
- We investigate all quality concerns to ensure our products perform to the highest standards

If the product does not perform as described on this datasheet, we will offer a refund or replacement. For full details of the Abpromise, please visit <https://www.abcam.com/abpromise> or contact our technical team.

## **Terms and conditions**

---

- Guarantee only valid for products bought direct from Abcam or one of our authorized distributors