

Product datasheet

Recombinant Human AMELX protein ab114630

1 Image

Overview

Product name	Recombinant Human AMELX protein
Protein length	Protein fragment

Description

Nature	Recombinant
Source	Wheat germ
Amino Acid Sequence	
Accession	Q99217
Species	Human
Sequence	PVIPQQPMMPVPGQHSMTPIQHHQPNLPPPAQQPYQP QPVQPQPHQPMQP QPPVHPMQPLPPQPPLPPMFPMQPLPMLPDLTLEA WPSTDKTKREEVD
Molecular weight	37 kDa including tags
Amino acids	93 to 191

Specifications

Our [Abpromise guarantee](#) covers the use of **ab114630** in the following tested applications. The application notes include recommended starting dilutions; optimal dilutions/concentrations should be determined by the end user.

Applications	ELISA SDS-PAGE Western blot
Form	Liquid
Additional notes	Protein concentration is above or equal to 0.05 mg/ml. This protein is best used within three months from the date of receipt.

Preparation and Storage

Stability and Storage	Shipped on dry ice. Upon delivery aliquot and store at -80°C. Avoid freeze / thaw cycles.
------------------------------	---

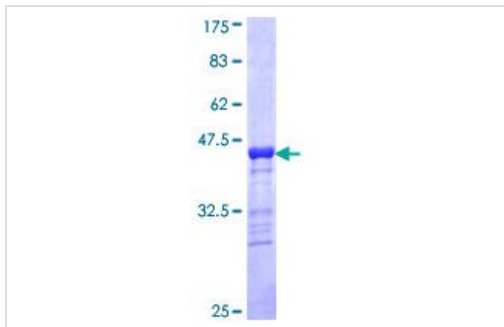
pH: 8.00

Constituents: 0.3% Glutathione, 0.79% Tris HCl

General Info

Function	Plays a role in biomineralization. Seems to regulate the formation of crystallites during the secretory stage of tooth enamel development. Thought to play a major role in the structural organization and mineralization of developing enamel.
Involvement in disease	Defects in AMELX are the cause of amelogenesis imperfecta hypoplastic type 1 (AIH1) [MIM:301200]. AIH1 is a X-linked defect of dental enamel formation. Teeth have only a thin layer of enamel with normal hardness. The thinness of the enamel makes the teeth appear small.
Sequence similarities	Belongs to the amelogenin family.
Developmental stage	Transiently but abundantly expressed by ameloblasts during tooth development. Amelogenin is the predominant protein in developing dental enamel.
Cellular localization	Secreted > extracellular space > extracellular matrix.

Images



ab114630 analysed by 12.5% SDS-PAGE and stained with Coomassie Blue.

SDS-PAGE - Recombinant Human AMELX protein
(ab114630)

Please note: All products are "FOR RESEARCH USE ONLY AND ARE NOT INTENDED FOR DIAGNOSTIC OR THERAPEUTIC USE"

Our Abpromise to you: Quality guaranteed and expert technical support

- Replacement or refund for products not performing as stated on the datasheet
- Valid for 12 months from date of delivery
- Response to your inquiry within 24 hours
- We provide support in Chinese, English, French, German, Japanese and Spanish
- Extensive multi-media technical resources to help you
- We investigate all quality concerns to ensure our products perform to the highest standards

If the product does not perform as described on this datasheet, we will offer a refund or replacement. For full details of the Abpromise, please visit <https://www.abcam.com/abpromise> or contact our technical team.

Terms and conditions

- Guarantee only valid for products bought direct from Abcam or one of our authorized distributors