

Product datasheet

Recombinant Human AP1S1 protein ab116806

1 Image

Overview

<b>Product name</b>	Recombinant Human AP1S1 protein
<b>Protein length</b>	Full length protein

Description

<b>Nature</b>	Recombinant
<b>Source</b>	Wheat germ
<b>Amino Acid Sequence</b>	
<b>Accession</b>	<a href="#">P61966-2</a>
<b>Species</b>	Human
<b>Sequence</b>	MMRFMLLFSRQGKLRRLRWYLATSDKERKKMVRELM QVVLARKPKMCSFL EWRDLKVVYKRYASLYFCCAIEGQDNELITLELIHRYVE LLDKYFGSVCE LDIIFNFEKAYFILDEFMGGDVQDTSTFPFSH
<b>Molecular weight</b>	41 kDa including tags
<b>Amino acids</b>	1 to 133

Specifications

Our [Abpromise guarantee](#) covers the use of **ab116806** in the following tested applications. The application notes include recommended starting dilutions; optimal dilutions/concentrations should be determined by the end user.

<b>Applications</b>	Western blot ELISA SDS-PAGE
<b>Form</b>	Liquid
<b>Additional notes</b>	Protein concentration is above or equal to 0.05 mg/ml. This protein is best used within three months from the date of receipt.

Preparation and Storage

<b>Stability and Storage</b>	Shipped on dry ice. Upon delivery aliquot and store at -80°C. Avoid freeze / thaw cycles.
------------------------------	---

pH: 8.00

Constituents: 0.79% Tris HCl, 0.3% Glutathione

## General Info

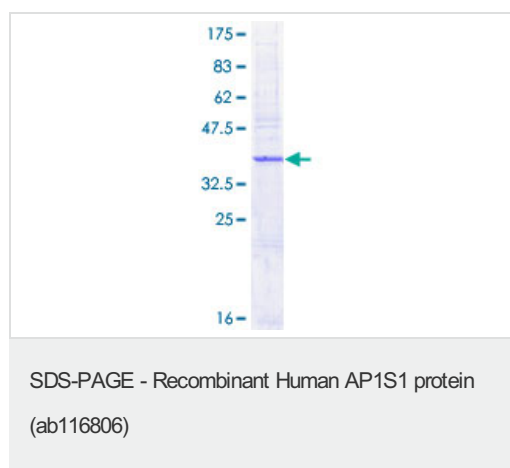
---

<b>Function</b>	Subunit of clathrin-associated adaptor protein complex 1 that plays a role in protein sorting in the late-Golgi/trans-Golgi network (TGN) and/or endosomes. The AP complexes mediate both the recruitment of clathrin to membranes and the recognition of sorting signals within the cytosolic tails of transmembrane cargo molecules.
<b>Tissue specificity</b>	Widely expressed.
<b>Sequence similarities</b>	Belongs to the adaptor complexes small subunit family.
<b>Cellular localization</b>	Golgi apparatus. Cytoplasmic vesicle membrane. Membrane > clathrin-coated pit. Component of the coat surrounding the cytoplasmic face of coated vesicles located at the Golgi complex.

---

## Images

---



12.5% SDS-PAGE showing ab116806 at approximately 40.74kDa. Stained with Coomassie Blue.

**Please note:** All products are "FOR RESEARCH USE ONLY AND ARE NOT INTENDED FOR DIAGNOSTIC OR THERAPEUTIC USE"

## Our Abpromise to you: Quality guaranteed and expert technical support

---

- Replacement or refund for products not performing as stated on the datasheet
- Valid for 12 months from date of delivery
- Response to your inquiry within 24 hours
  
- We provide support in Chinese, English, French, German, Japanese and Spanish
- Extensive multi-media technical resources to help you
- We investigate all quality concerns to ensure our products perform to the highest standards

If the product does not perform as described on this datasheet, we will offer a refund or replacement. For full details of the Abpromise, please visit <https://www.abcam.com/abpromise> or contact our technical team.

## Terms and conditions

---

- Guarantee only valid for products bought direct from Abcam or one of our authorized distributors