

## Product datasheet

# Recombinant Human BYSL protein ab157981

1 Image

### Overview

---

<b>Product name</b>	Recombinant Human BYSL protein
<b>Protein length</b>	Full length protein

### Description

---

<b>Nature</b>	Recombinant
<b>Source</b>	Wheat germ

### Amino Acid Sequence

<b>Species</b>	Human
<b>Sequence</b>	MTAAGHHAEEVVDPEDERAIEFMNKNPPARRTLADIIMEKLTEKQTEVE TVMSEVSGFPMPLDPRVLEVYRGVREVLSKYRSGKLPKAFKIIPALSNW DQILYVTEPEAWTAAAMYQATRIFASNLKERMAQRFYNLVLLPRVRDDVA EYKRLNFHLYMALKKALFKPGAWFKGILIPLCESGTCTLREAIIVGSIIT KCSIPVLHSSAAMLKIAEMEYSGANSIFLRLLLDKKYALPYRVLDALVFH FLGFRTEKRELPVLWHQCLLTLVQRYKADLATDQKEALLELLRLQPHPQL SPEIRRELQSAVPRDVEDVPITVE
<b>Amino acids</b>	1 to 324
<b>Tags</b>	proprietary tag N-Terminus

### Specifications

---

Our [Abpromise guarantee](#) covers the use of **ab157981** in the following tested applications.

The application notes include recommended starting dilutions; optimal dilutions/concentrations should be determined by the end user.

<b>Applications</b>	ELISA Western blot
<b>Form</b>	Liquid
<b>Additional notes</b>	Protein concentration is above or equal to 0.05 mg/ml.

### Preparation and Storage

---

<b>Stability and Storage</b>	Shipped on dry ice. Upon delivery aliquot and store at -80°C. Avoid freeze / thaw cycles.
------------------------------	---

pH: 8.00

Constituents: 0.31% Glutathione, 0.79% Tris HCl

## General Info

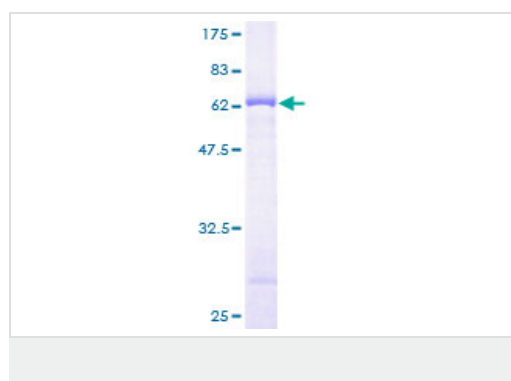
---

<b>Function</b>	Required for processing of 20S pre-rRNA precursor and biogenesis of 40S ribosomal subunits. May be required for trophinin-dependent regulation of cell adhesion during implantation of human embryos.
<b>Tissue specificity</b>	Found in the placenta from the sixth week of pregnancy. Was localized in the cytoplasm of the syncytiotrophoblast in the chorionic villi and in endometrial decidual cells at the uteroplacental interface. After week 10, the level decreased and then disappeared from placental villi.
<b>Sequence similarities</b>	Belongs to the bystin family.
<b>Cellular localization</b>	Cytoplasm. Nucleus > nucleolus. Associated with 40S ribosomal subunits.

---

## Images

---



ab157981 on a 12.5% SDS-PAGE stained with Coomassie Blue.

**Please note:** All products are "FOR RESEARCH USE ONLY AND ARE NOT INTENDED FOR DIAGNOSTIC OR THERAPEUTIC USE"

## Our Abpromise to you: Quality guaranteed and expert technical support

---

- Replacement or refund for products not performing as stated on the datasheet
- Valid for 12 months from date of delivery
- Response to your inquiry within 24 hours
- We provide support in Chinese, English, French, German, Japanese and Spanish
- Extensive multi-media technical resources to help you
- We investigate all quality concerns to ensure our products perform to the highest standards

If the product does not perform as described on this datasheet, we will offer a refund or replacement. For full details of the Abpromise, please visit <https://www.abcam.com/abpromise> or contact our technical team.

## Terms and conditions

---

- Guarantee only valid for products bought direct from Abcam or one of our authorized distributors