

Product datasheet

Recombinant Human Biglycan protein (denatured)
 ab140579

1 Image

Overview

Product name	Recombinant Human Biglycan protein (denatured)
Protein length	Full length protein
Description	Recombinant Human Biglycan protein

Description

Nature	Recombinant
Source	Escherichia coli

Amino Acid Sequence

Accession	P21810
Species	Human
Sequence	<p>MGSSHHHHHH SSGLVPRGSH MDEEASGADT SGVLDPDSVT PTYSAMCPFG CHCHLRVVQC SDLGLKSVPK EISPDITLLD LQNNDISELR KDDFKGLQHL YALVLVNNKI SKIHEKAFSP LRKLQKLYIS KNHLVEIPPN LPSSLVELRI HDNRIRKVPK GVFSGLRNMN CIEMGGNPLE NSGFEPGAFD GLKLNLYRIS EAKLTGIPKD LPETLNELHL DHNKIQAIEL EDLLRYSKLY RLGLGHNQIR MIENGSL SFL PTLRELHLDN NKLARVPSGL PDLKLLQVVY LHSNNITKVG VNDFCPMGFG VKRAYNGIS LFNNPVPYWE VQPATFRCVT DRLAIQFGNY KK</p>

Molecular weight	40 kDa including tags
Amino acids	38 to 368
Tags	His tag N-Terminus

Specifications

Our [Abpromise guarantee](#) covers the use of **ab140579** in the following tested applications.

The application notes include recommended starting dilutions; optimal dilutions/concentrations should be determined by the end user.

Applications	SDS-PAGE
Purity	> 85 % SDS-PAGE.
Form	Liquid

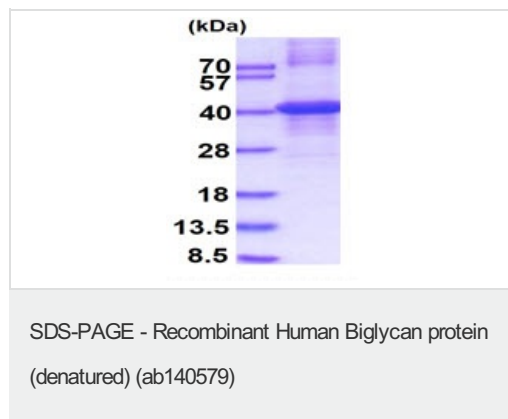
Preparation and Storage

Stability and Storage	Shipped at 4°C. Store at +4°C short term (1-2 weeks). Upon delivery aliquot. Store at -20°C or -80°C. Avoid freeze / thaw cycle. pH: 8.00 Constituents: 2.4% Urea, 0.32% Tris HCl, 10% Glycerol
------------------------------	---

General Info

Function	May be involved in collagen fiber assembly.
Tissue specificity	Found in several connective tissues, especially in articular cartilages.
Sequence similarities	Belongs to the small leucine-rich proteoglycan (SLRP) family. SLRP class I subfamily. Contains 12 LRR (leucine-rich) repeats.
Post-translational modifications	The two attached glycosaminoglycan chains can be either chondroitin sulfate or dermatan sulfate.
Cellular localization	Secreted > extracellular space > extracellular matrix.

Images



15% SDS PAGE analysis of ab140579 (3 µg).

Please note: All products are "FOR RESEARCH USE ONLY AND ARE NOT INTENDED FOR DIAGNOSTIC OR THERAPEUTIC USE"

Our Abpromise to you: Quality guaranteed and expert technical support

- Replacement or refund for products not performing as stated on the datasheet
- Valid for 12 months from date of delivery
- Response to your inquiry within 24 hours

- We provide support in Chinese, English, French, German, Japanese and Spanish
- Extensive multi-media technical resources to help you
- We investigate all quality concerns to ensure our products perform to the highest standards

If the product does not perform as described on this datasheet, we will offer a refund or replacement. For full details of the Abpromise, please visit <https://www.abcam.com/abpromise> or contact our technical team.

Terms and conditions

- Guarantee only valid for products bought direct from Abcam or one of our authorized distributors